

TURBO COMPRESSOR V 1.0 - MANUAL

Technical Director :

Christian Minotto

Technical Writer/Supporter :

Massimo de Poli

By Xedius s.r.l.

Italy

Copyright © 2008-2050 All rights reserved

Summary

Index

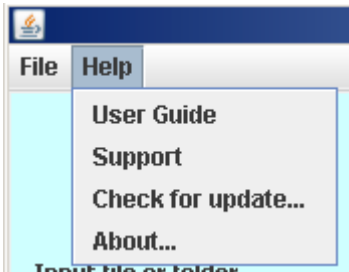
TURBO COMPRESSOR V 1.0 - MANUAL.....	1
Summary.....	2
The introduction.....	3
Legend.....	3
The interface.....	4
The first part.....	5
The second part.....	6
Exit program.....	7
Help.....	8
How to compress a folder.....	10
Details	12
How to decompress a folder.....	13
Details	16
Archive :.....	17
Open Archive.....	17
Search File.....	19
Insert File.....	20
Replace File.....	21
Remove File.....	23
Rename File.....	23
Save Archive.....	24
Details	25
Command Line.....	26
Credits.....	28

The introduction

Turbo Compressor V 1.0 is a new compression program.
It was made by Xedius s.r.l.
Turbo Compressor has a big efficiency of compression and usually optimize space for compressed files.

Legend

- ☐ **Text box** : an area where you can write with the keyboard
Visualization :
- ☐ **Button** : An area where you can press with the mouse
Visualization :
- ☐ **Check** : An area where you can select or deselect
Visualization :
 - ☒ Deselect : ☐
 - ☒ Select : ☐
- ☐ **Selection list** : A list of voice where you can select only one voice
Visualization :
 - ☐ Example 0
 - ☐ Example 1
 - ☐ Example 2
 - ☐ Example 3
- ☐ **Menù** : Voice of a selection menu



Visualization :

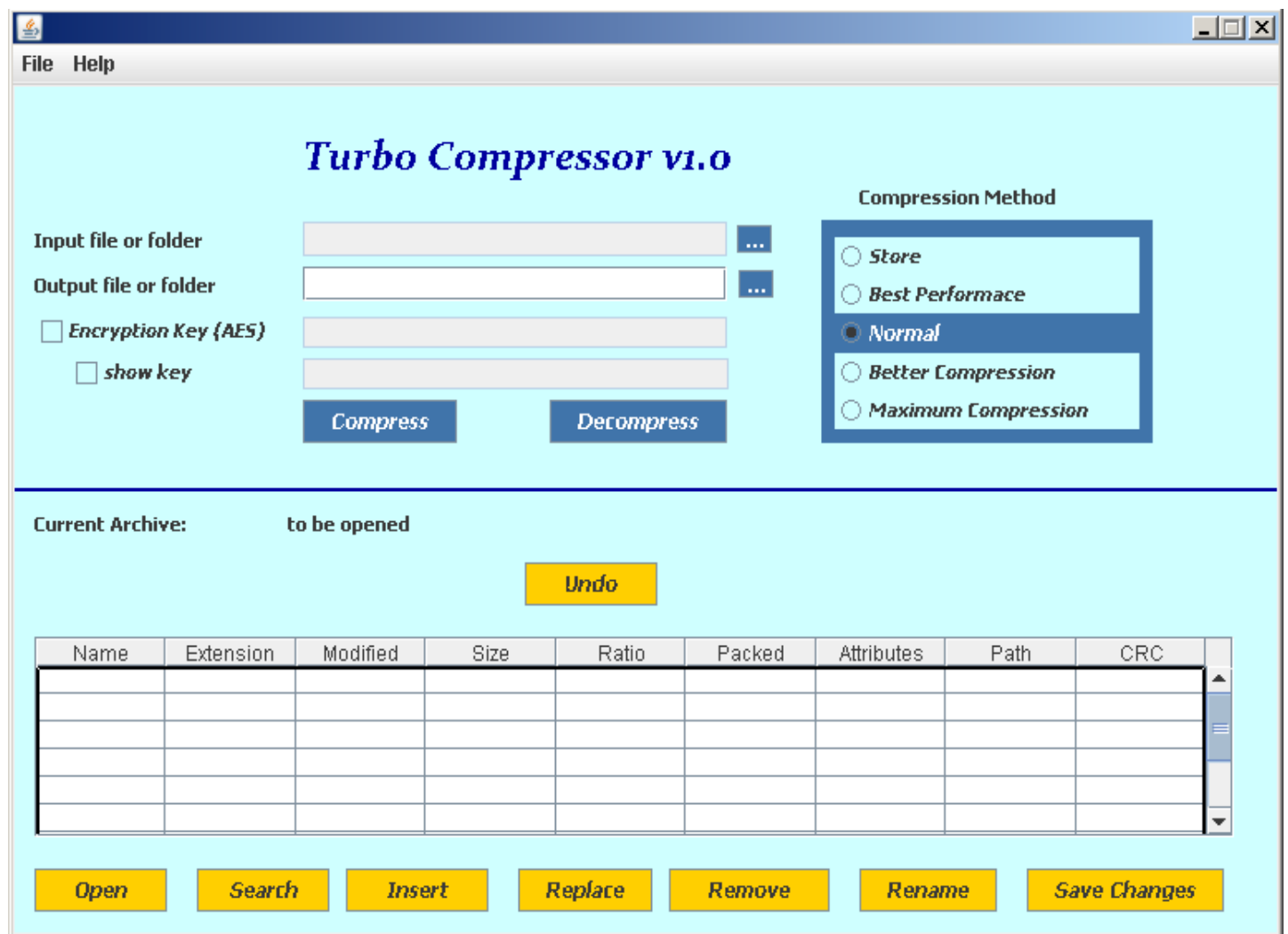
- ☐ **Column** (of a table) : A column in a table
Visualization :

Column A	Column B	Column C	Column D	Column E
A1	B1	C1	D1	E1
A2	B2	C2	D2	E2
A3	B3	C3	D3	E3
A4	B4	C4	D4	E4
A5	B5	C5	D5	E5

The interface

The interface is divided into two parts :

1. [First part](#) you can compress or decompress files
2. [Second part](#) you can manage the archive



The screenshot shows the Turbo Compressor v1.0 application window. The title bar includes a logo and standard window controls. The menu bar has 'File' and 'Help'. The main area is light blue and titled 'Turbo Compressor v1.0'. It features input fields for 'Input file or folder' and 'Output file or folder', each with a browse button (...). There are checkboxes for 'Encryption Key (AES)' and 'show key', with corresponding input fields. Two buttons, 'Compress' and 'Decompress', are located below these fields. To the right, a 'Compression Method' section contains five radio buttons: 'Store', 'Best Performace', 'Normal' (selected), 'Better Compression', and 'Maximum Compression'. Below this, a section labeled 'Current Archive:' shows 'to be opened' and an 'Undo' button. A table with columns: Name, Extension, Modified, Size, Ratio, Packed, Attributes, Path, and CRC is present. At the bottom, a row of buttons includes 'Open', 'Search', 'Insert', 'Replace', 'Remove', 'Rename', and 'Save Changes'.

Turbo Compressor v1.0

File Help

Input file or folder ...

Output file or folder ...

☐ Encryption Key (AES)

☐ show key

Compress **Decompress**

Compression Method

☐ Store

☐ Best Performace

☒ Normal

☐ Better Compression

☐ Maximum Compression

Current Archive: to be opened

Undo

Name	Extension	Modified	Size	Ratio	Packed	Attributes	Path	CRC

Open **Search** **Insert** **Replace** **Remove** **Rename** **Save Changes**

The first part



The first part is composed by :

- Text box **"Input file or folder"** :
 - **For "Compress"** : The folder that you want to compress
 - **For "Decompress"** : The archive file that you want to decompressButton **"..."** : Open a form where you can select the folder that you want to use as "Input file or folder"
- Text box **"Output file or folder"** :
 - **For "Compress"** : The archive file name
 - **For "Decompress"** : The folder that you want the folder's archive to be addedButton **"..."** : Open a form where you can select the folder that you want to use as "Output file or folder"
- Check **"Encryption Key (AES)"** : Select this check if your archive has a password
Text box **"Encryption Key (AES)"** : Archive password
- Check **"Show key"** : Select this check if you want to see the password that you insert in "Encryption Keys (AES)"
Text box **"Show key"** : The "Encryption Key (AES)" in clear
- Selection list **"Compression method"** : the method that you want to use to compress, not used in decompression
- Button **"Compress"** : starts compression as parameters setting
- Button **"Decompress"** : starts decompression as parameters setting

Selection list **"Compression method"** :

- **"Store"** : The files aren't treated, faster without compression
- **"Best performance"** : Use a one-level zip algorithm, fast with less compression
- **"Normal"** : Use a one-level zip algorithm and ascii-base algorithm, nominal speed with nominal compression
- **"Better compression"** : Use a multi-level zip algorithm and ascii-base algorithm, slower speed with better compression
- **"Maximum compression"** : Use a multi-level zip algorithm and ascii-base algorithm, slowest speed with best compression

The second part

Current Archive: **to be opened**

Undo

Name	Extension	Modified	Size	Ratio	Packed	Attributes	Path	CRC	
									▲
									▬
									▼

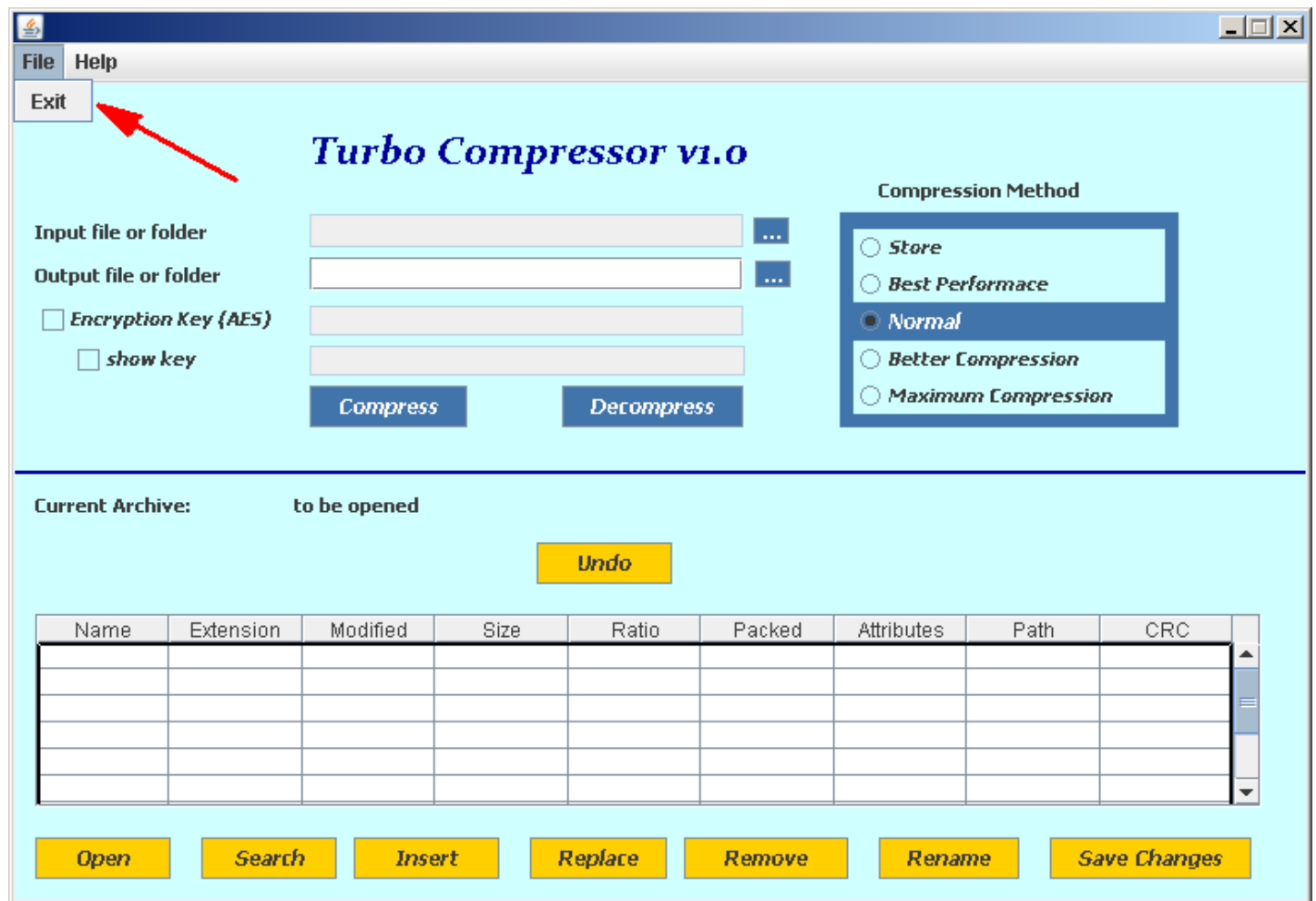
Open Search Insert Replace Remove Rename Save Changes

The second part is composed by :

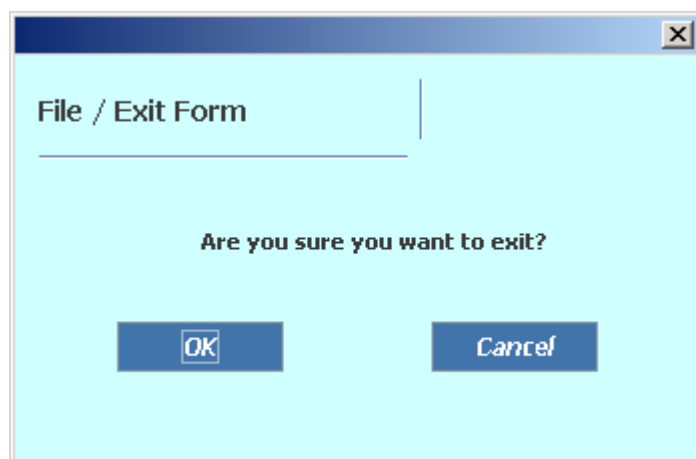
- Column **"Name"** : Specific file name
 - Column **"Extension"** : The extension of the compressed file
 - Column **"Modified"** : Last modification time of the file
 - Column **"Size"** : Original size of the file
 - Column **"Ratio"** : Percentage of the compression for the file
 - Column **"Packed"** : Compressed size
 - Column **"Attributes"** : Attributes of the file
 - Column **"Path"** : Absolute path of the file
 - Column **"CRC"** : Checksum of the file expressed in digits
 - Button **"Open"** : Open an archive
 - Button **"Search"** : Search a file in the opened archive
 - Button **"Insert"** : Insert a file in the opened archive
 - Button **"Replace"** : Replace a file in the opened archive
 - Button **"Remove"** : Remove a file in the opened archive
 - Button **"Rename"** : Rename a file in the opened archive
 - Button **"Save changes"** : Save changes of the opened archive
 - Button **"Undo"** : Restore the situation of the archive before the last **"Insert"** or **"Replace"** or **"Remove"** or **"Rename"** operation
-

Exit program

To close the program select menu **File -> Exit**



Then will appear the form :



If you press "OK" you'll exit the program, else if you press "Cancel" you'll close the form and return to the program.

Note : If you used the second part of the program, without saving the archive, you'll lost all modified

Help

Turbo Compressor v1.0

File Help

- User Guide
- Support
- Check for update...
- About...

Input file or folder ...

Output file or folder ...

☐ Encryption Key (AES)

☐ show key

Compress Decompress

Compression Method

- ☐ Store
- ☐ Best Performance
- ☒ Normal
- ☐ Better Compression
- ☐ Maximum Compression

Current Archive: to be opened

Undo

Name	Extension	Modified	Size	Ratio	Packed	Attributes	Path	CRC

Open Search Insert Replace Remove Rename Save Changes

- To visualize this guide in html format or in pdf format select **Help -> User Guide**

Then open the **User Guide Form**

Help / User Guide Form

Visits [<installation>/Doc/User Guide.pdf](installation/Doc/User Guide.pdf)

or

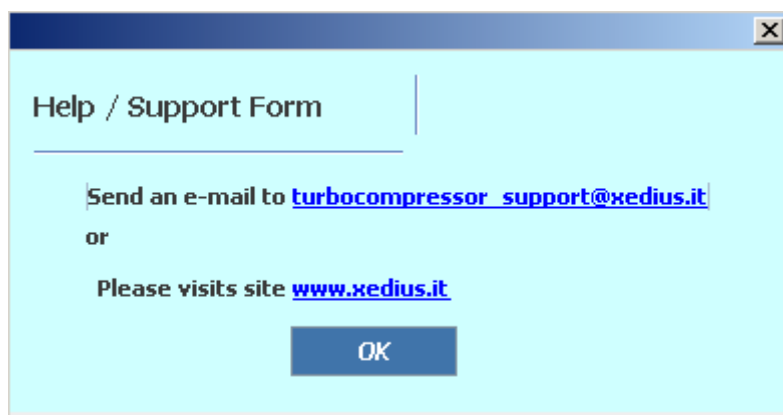
Visits [<installation>/Doc/User Guide/index.htm](installation/Doc/User Guide/index.htm)

OK

Select a format of user guide

- To contact the support for the program select **Help -> Support**

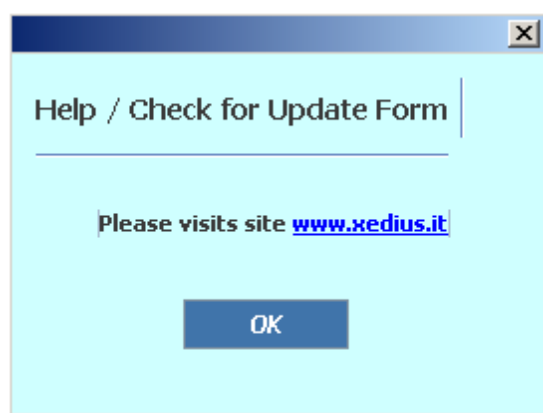
Then open the **Support Form**



Select a type of contact

- For checking program updates select **Help -> Check for update ...**

Then open the **Update Form**



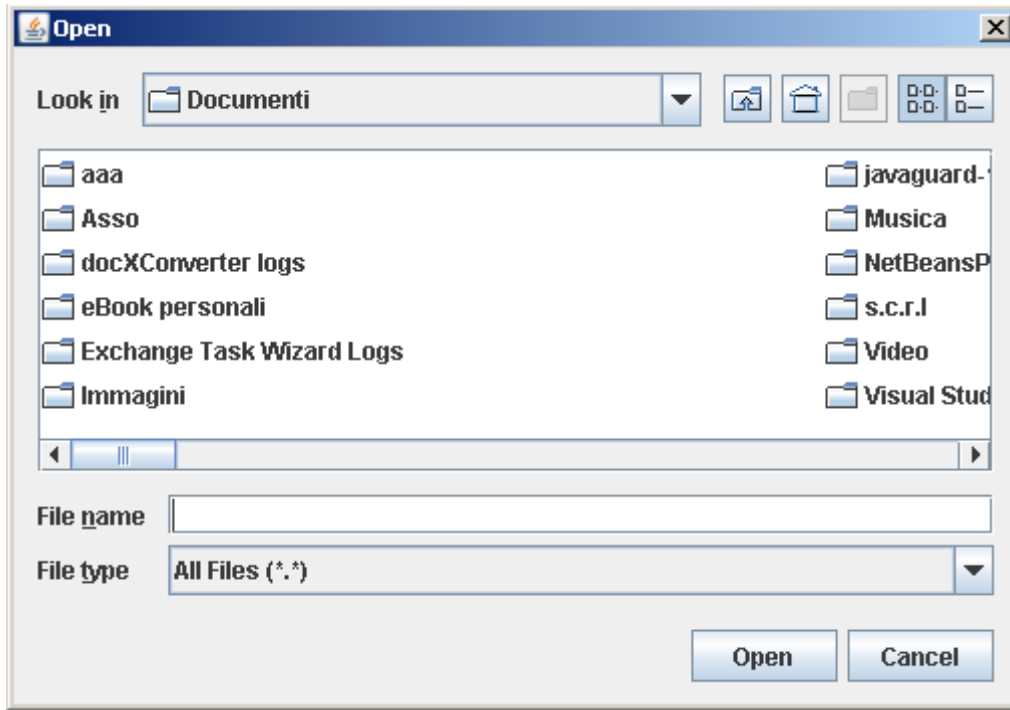
- To visualize the credits or the licence key of this program select **Help -> About ...**

Then open the **About Form**



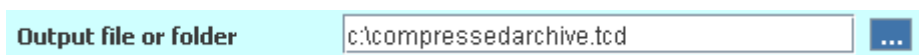
How to compress a folder

1. Select with button "... " the name of the folder that you want to compress
 1. Select in **"Look in"** the file or the directory that contains the folder that you want to compress
 2. Select the file or the folder that you want to compress
 3. Now the text box **"File name"** contains the name of the file or the folder with full path, then press button **"Open"**



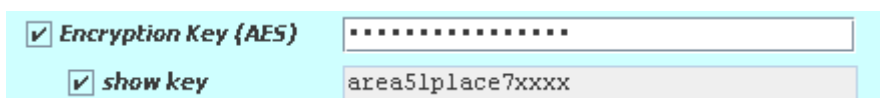
The complete path will display in the text box **"Input file or folder"**

2. Write the name of the archive that you want to create in the text box **"Output file or folder"**



3. If you want the archive to have a password, write in **"Encryption Key (AES)"** the password that you want to associate to the archive

Note : If you want to display in clear the password that you have typed, select the check **"show key"**



4. Select the **"Compression method"** that you want to use



Note :

1. **"Store"** : The files aren't treated, faster without compression
2. **"Best performance"** : Use a one-level zip algorithm, fast with less compression
3. **"Normal"** : Use a one-level zip algorithm and ascii-base algorithm, nominal speed with nominal compression
4. **"Better compression"** : Use a multi-level zip algorithm and ascii-base algorithm, slower speed with better compression
5. **"Maximum compression"** : Use a multi-level zip algorithm and ascii-base algorithm, slowest speed with best compression

5. Press the button **"Compress"**

Turbo Compressor v1.0

File Help

Input file or folder: C:\ACE ...

Output file or folder: c:\compressedarchive.tcd ...

☒ Encryption Key (AES) :

☒ show key : area51place7xxxx

Compress **Decompress**

Compression Method

☐ Store

☐ Best Performance

☐ Normal

☐ Better Compression

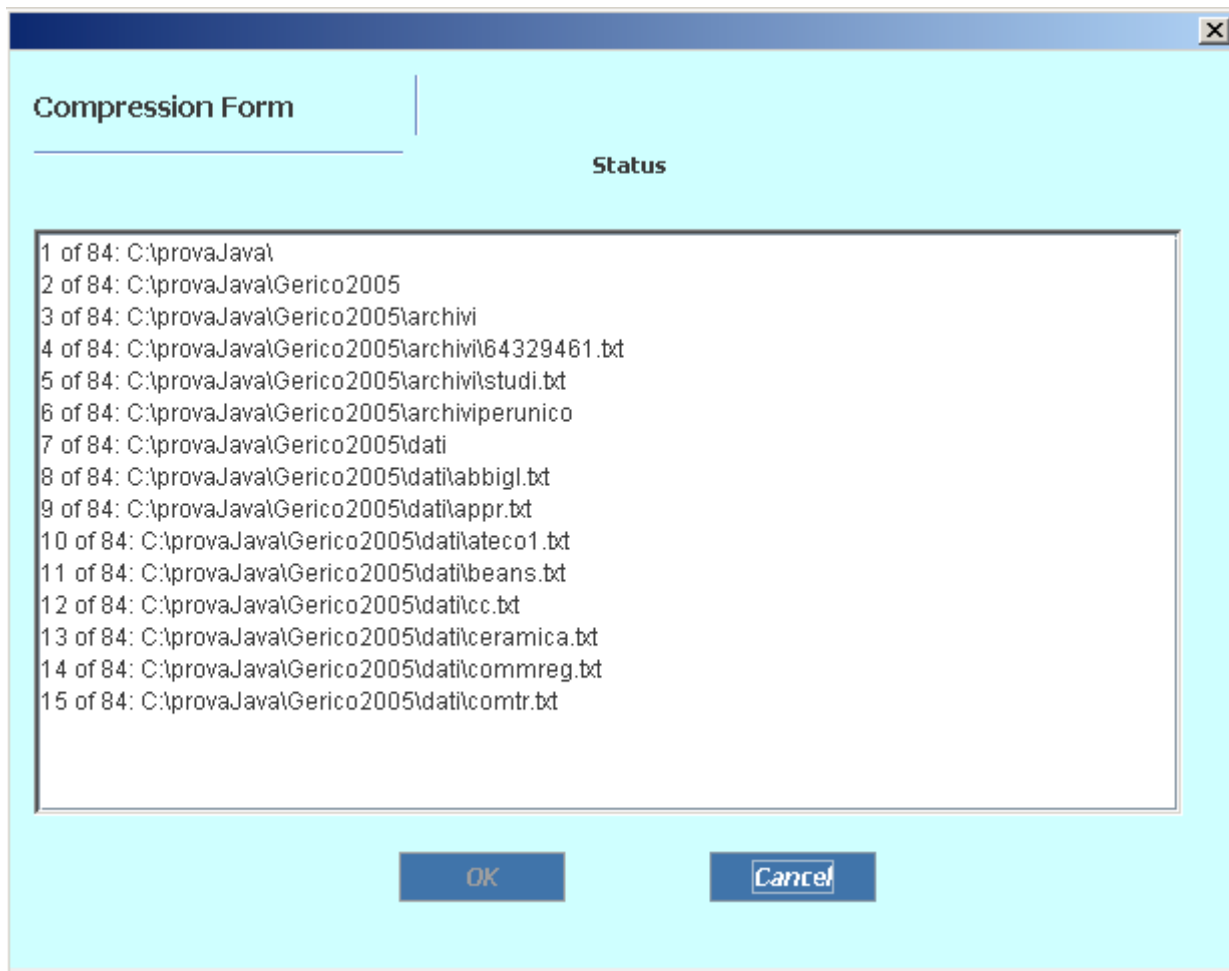
☒ Maximum Compression

Current Archive: Current Archive Absolute Path

Name	Extension	Modified	Size	Ratio	Packed	Attributes	Path	CRC

Open **Search** **Insert** **Replace** **Remove** **Rename** **Save Changes**

Now "**Compressed Form**" has been opened.



Then press "**OK**" to start compression.

If you select button "**Cancel**" meanwhile the compression runs, the program doesn't create the archive file.

At the end of the compression you must select the button "**Cancel**" to close the window.

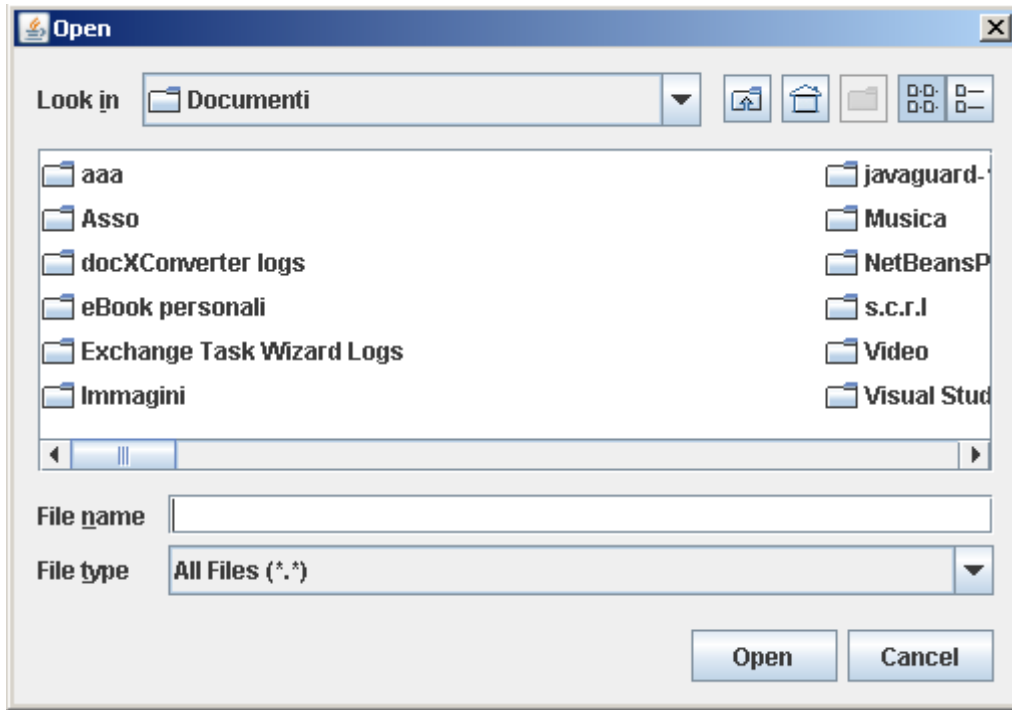
Details

Archive password can't be saved or retrived automatically by the program.

THEN REMEMBER THE PASSWORD

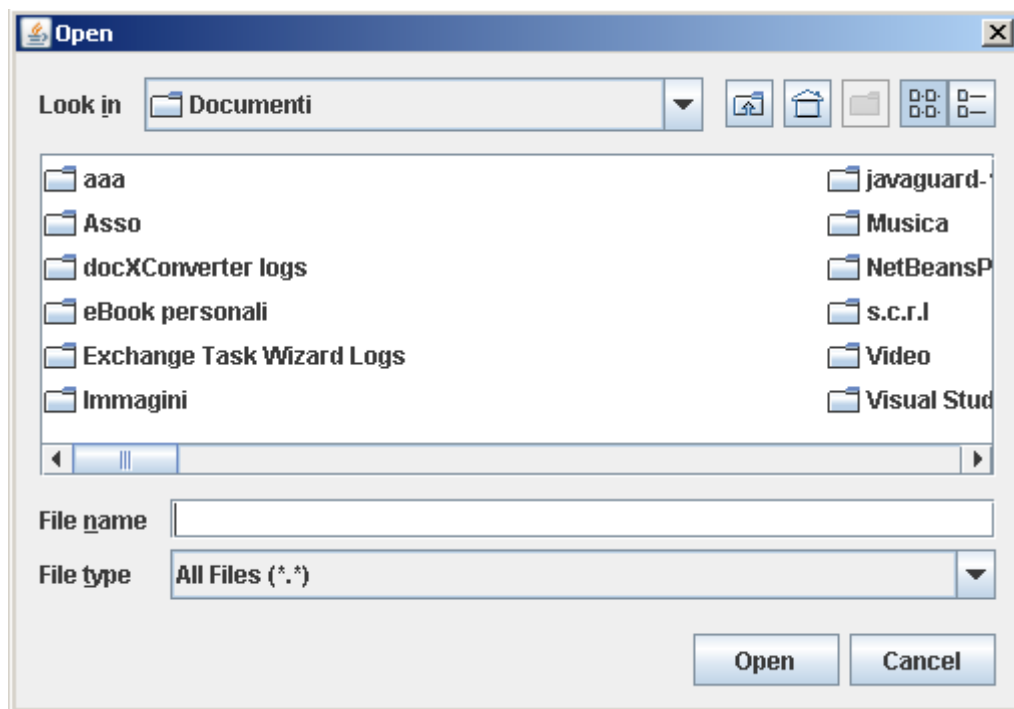
How to decompress a folder

1. Select with button "... " the name of the archive file that you want to decompress
 1. Select in "**Look in**" the directory that contains the archive that you want to decompress
 2. Select the archive file that you want to decompress
 3. Now the text box "**File name**" contains the name of the archive file with full path, then press button "**Open**"



The complete path will display in the text box "**Input file or folder**"

2. Select with button "... " the name of the folder that you want to contain the archive folder
 1. Select in "**Look in**" the directory that will contain the archive that you want to decompress
 2. Select the folder that will contain the archive that you want to decompress
 3. Now the text box "**File name**" contains the name of the folder with full path, then press button "**Open**"



The complete path will display in the text box "**Output file or folder**"

3. If the archive has a password, write in "**Encription Key (AES)**" the password associated to the archive

Note : If you want to display in clear the password that you have typed, select the check "**show key**"

<input checked="" type="checkbox"/> Encryption Key (AES)
<input checked="" type="checkbox"/> show key	area51place7xxxx

4. Press the button "**Decompress**"

The screenshot shows the Turbo Compressor v1.0 application window. The title bar includes 'File' and 'Help' menus. The main area has a light blue background with the title 'Turbo Compressor v1.0' in a stylized font. On the left, there are input fields for 'Input file or folder' (C:\mio.tc), 'Output file or folder' (C:\Documents and Settings\Administrator), and an 'Encryption Key (AES)' section with a checked 'show key' option displaying 'area51place7xxxx'. To the right, a 'Compression Method' panel shows radio buttons for 'Store', 'Best Performace', 'Normal' (selected), 'Better Compression', and 'Maximum Compression'. Below these are 'Compress' and 'Decompress' buttons. A section labeled 'Current Archive:' shows 'to be opened' with an 'Undo' button. At the bottom is a table with columns: Name, Extension, Modified, Size, Ratio, Packed, Attributes, Path, and CRC. Below the table is a row of action buttons: Open, Search, Insert, Replace, Remove, Rename, and Save Changes.

Turbo Compressor v1.0

Input file or folder: C:\mio.tc

Output file or folder: C:\Documents and Settings\Administrator

☒ Encryption Key (AES):
☒ show key: area51place7xxxx

Compression Method:
☐ Store
☐ Best Performace
☒ Normal
☐ Better Compression
☐ Maximum Compression

Compress Decompress

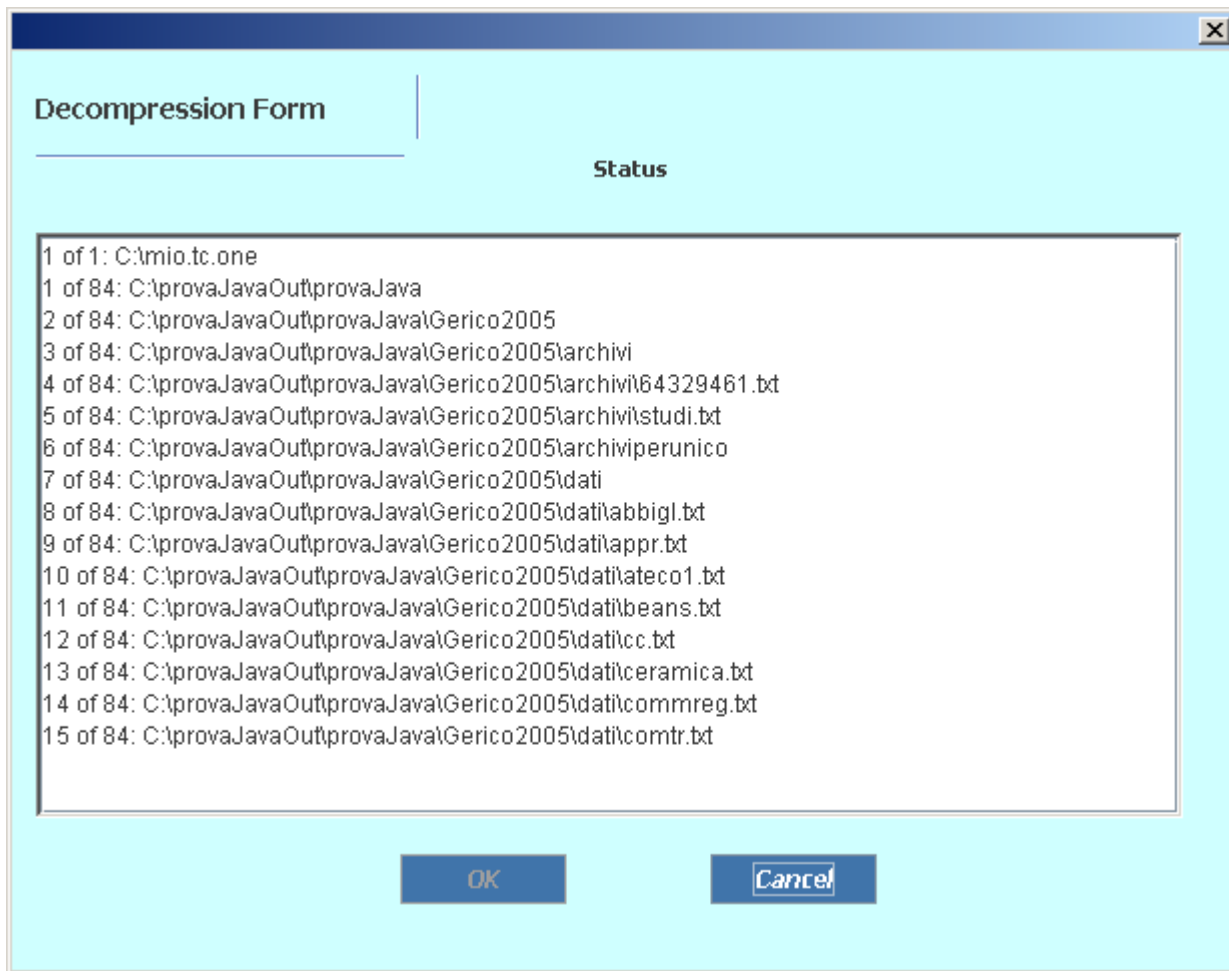
Current Archive: to be opened

Undo

Name	Extension	Modified	Size	Ratio	Packed	Attributes	Path	CRC

Open Search Insert Replace Remove Rename Save Changes

Now "**Decompression form**" has been opened.



Then press "OK" to start decompression.

If you select button "**Cancel**" meanwhile the decompression runs, the program stops execution at last extracted file.

At the end of the decompression you must select the button "**Cancel**" to close the window.

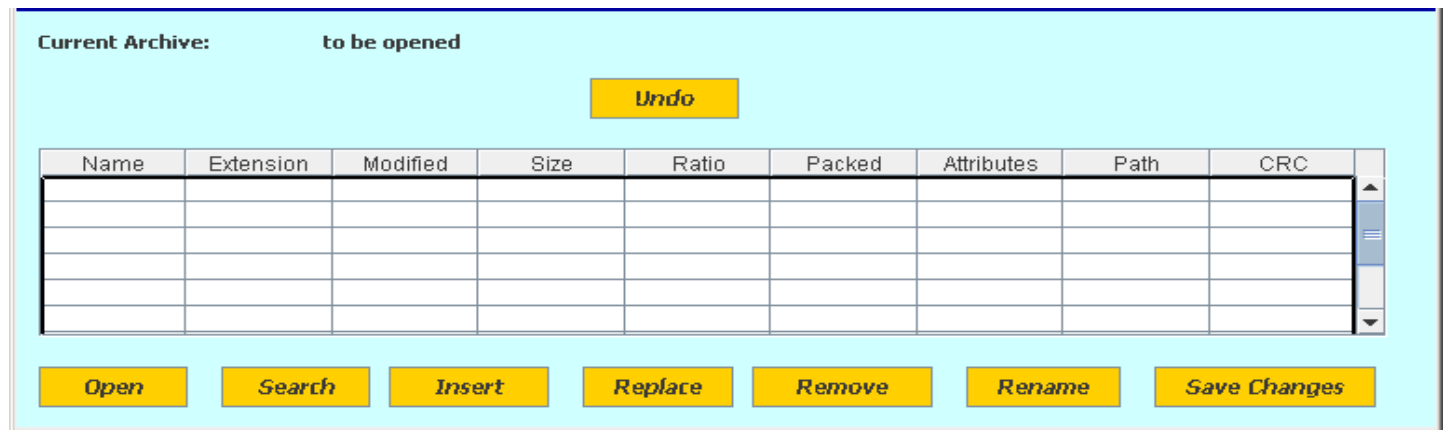
Details

Archive password can't be saved or retrived automatically by the program.

THEN REMEMBER THE PASSWORD

Archive :

Note : in the second part you must save the archive if you want permanent changes



Current Archive: to be opened

Undo

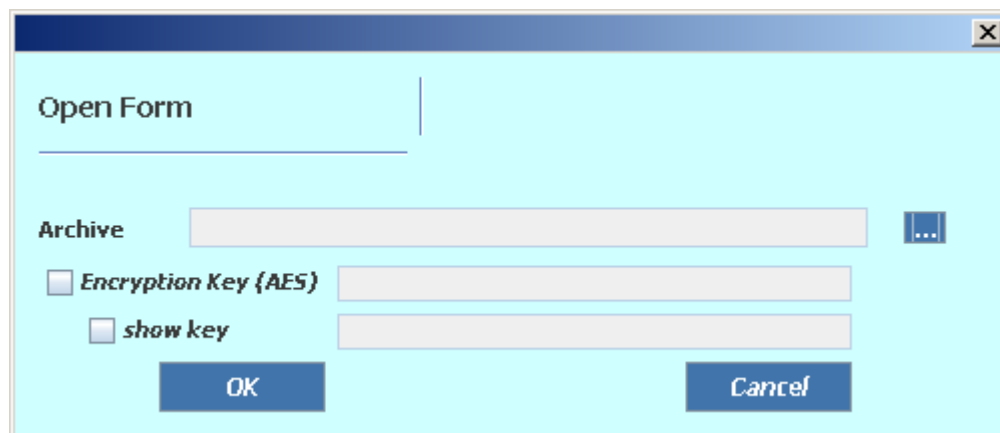
Name	Extension	Modified	Size	Ratio	Packed	Attributes	Path	CRC

Open Search Insert Replace Remove Rename Save Changes

Open Archive

To open an archive file press the button **"Open"** in the second part.

Will appear the **Open Form**



Open Form

Archive ...

☐ Encryption Key (AES)

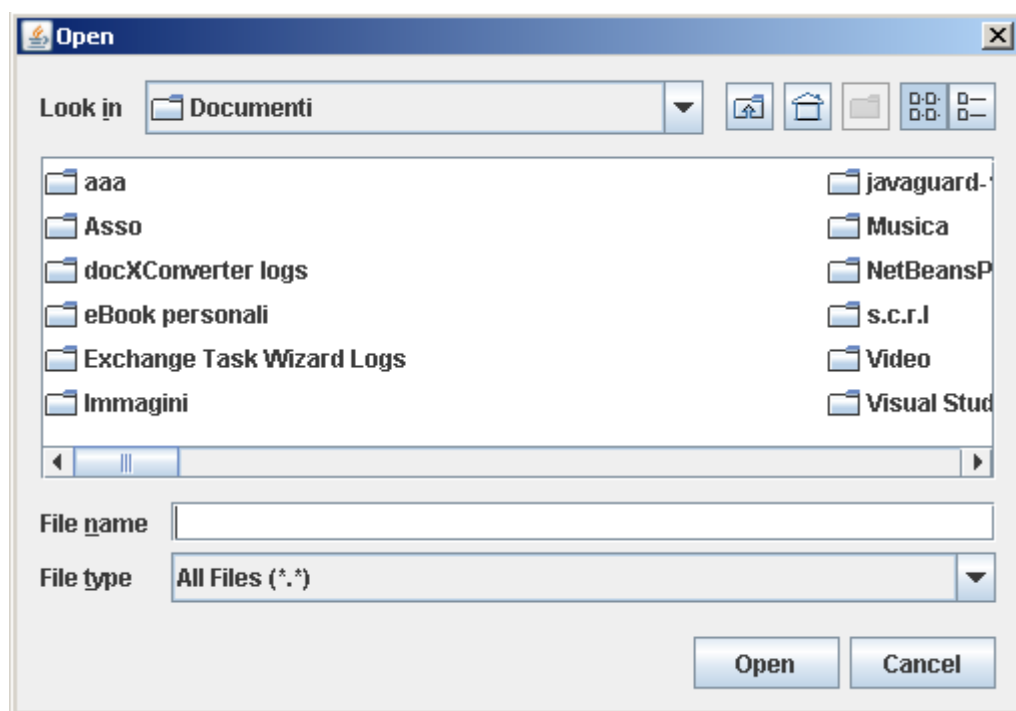
☐ show key

OK Cancel

To close the window press button **"Cancel"**

Select with button "... " the name of the archive file for which you want to view archive entries

1. Select in **"Look in"** the directory that contains the archive
2. Select the archive file
3. Now the text box **"File name"** contains the name of the archive file with full path, then press button **"Open"**



The archive file with complete path will display in the text box **"Archive"**

If the archive has a password, write in **"Encryption Key (AES)"** the password associated to the archive

Note : If you want to display in clear the password that you have typed, select the check **"show key"**

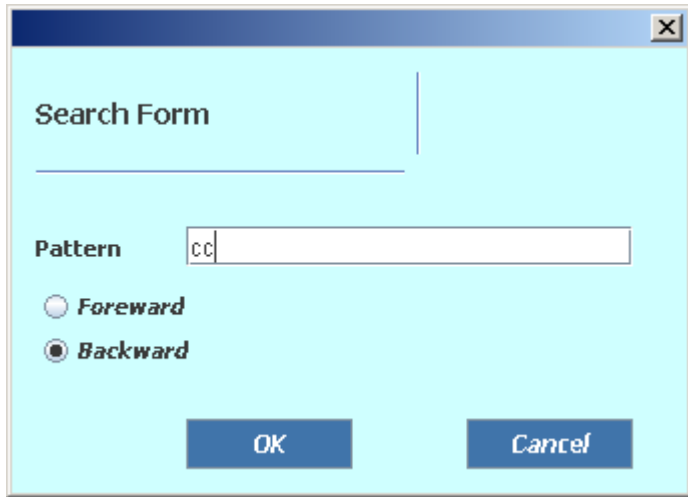
<input checked="" type="checkbox"/> Encryption Key {AES}
<input checked="" type="checkbox"/> show key	area5lplace7xxxx

Then press button **"OK"**

Search File

To search a file in an opened archive press the button **"Search"** in the second part.

Will appear the **Search Form**

A screenshot of a 'Search Form' dialog box. The dialog has a light blue background and a dark blue title bar with a close button (X). Inside, there is a text input field at the top. Below it, the label 'Pattern' is followed by a text input field containing 'cc'. Underneath the 'Pattern' field are two radio buttons: 'Foreward' (unselected) and 'Backward' (selected). At the bottom, there are two buttons: 'OK' and 'Cancel'.

To close the window press button **"Cancel"**

Write in the text box **"Pattern"** a part of the file name that you want to search

Select, if you want :

- **Foreward** : to search from actual selection in the table to the end of the table
- **Backward** : to search from actual selection in the table to the beginning of the table

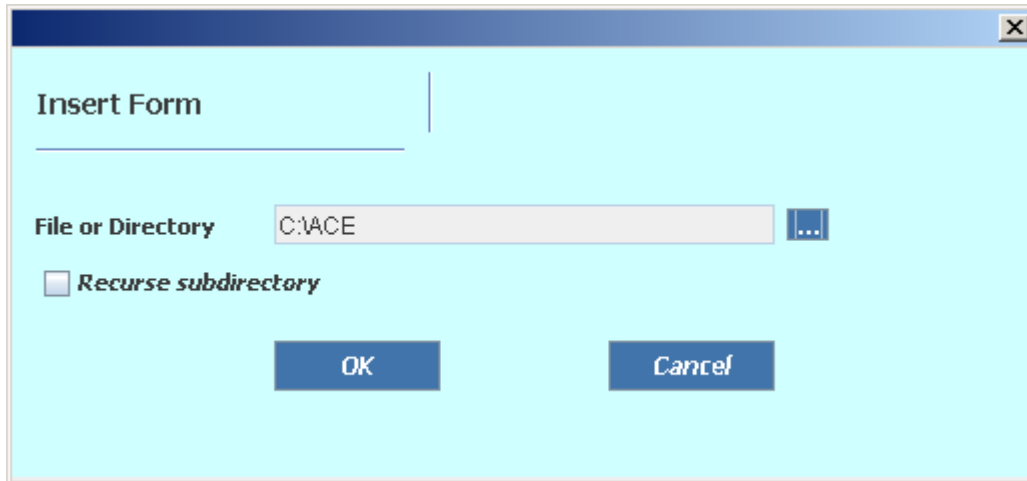
Then press the button **"OK"**

The program researchs and visualizes the first occurence in the name of the files in the table

Insert File

To insert a file in an opened archive press the button **"Insert"** in the second part.

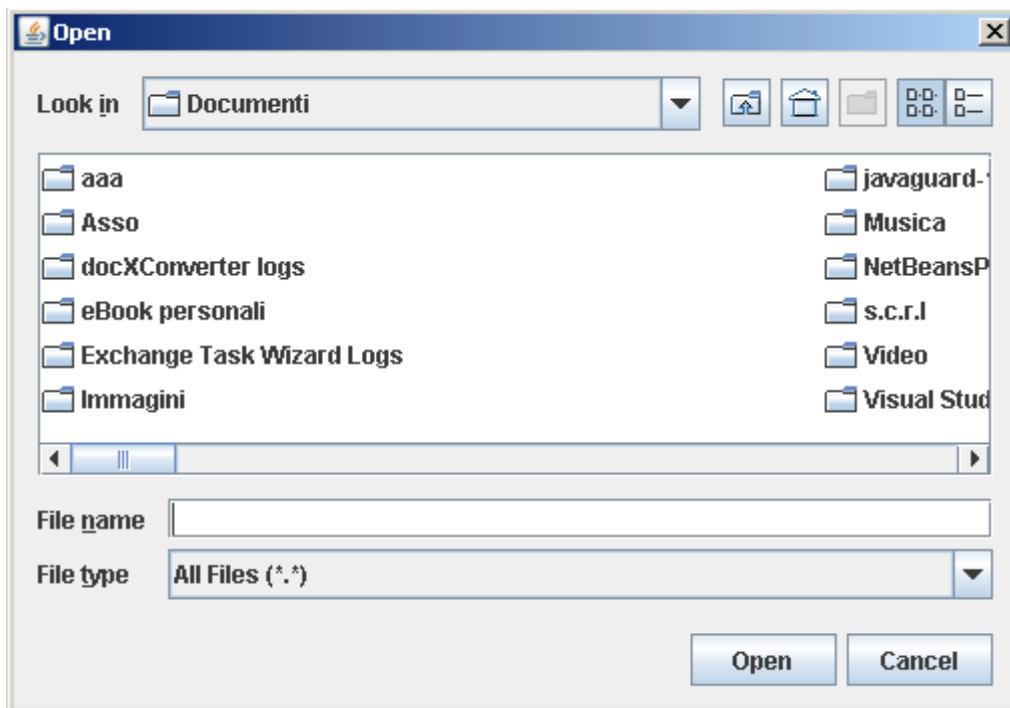
Will appear the **Insert Form**



To close the window press button **"Cancel"**

Select with button **"..."** the name of the file/directory that you want to be added

1. Select in **"Look in"** the folder that contains the file/directory that you want to be added
2. Select the file/directory that you want to be added
3. Now the text box **"File name"** contains the name of the file/directory with full path, then press button **"Open"**



The name file/directory with complete path will display in the text box **"File or directory"**

If you want to insert a directory with all subdirectories check **"Recurse subdirectory"**

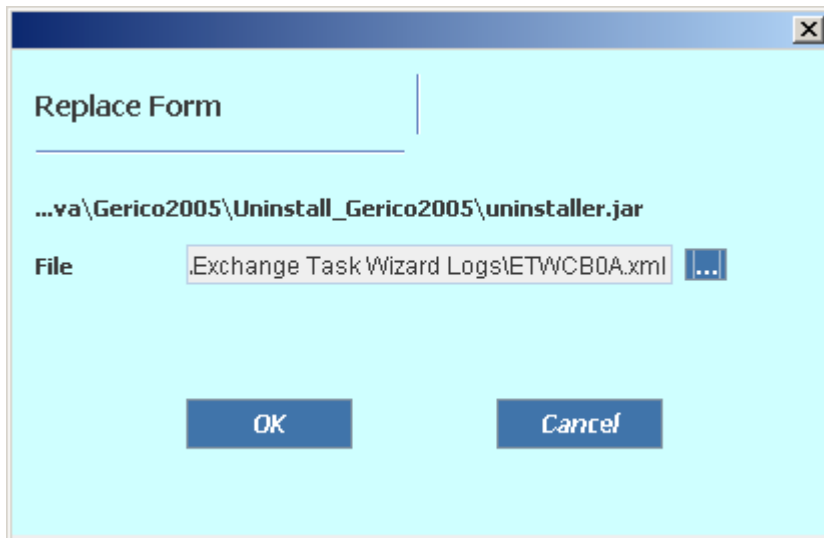
Then press the button **"OK"**

The program will add the selected file or directory at the end of the table

Replace File

To replace a file in an opened archive in the second part, select a file in the table and press the button **"Replace"**.

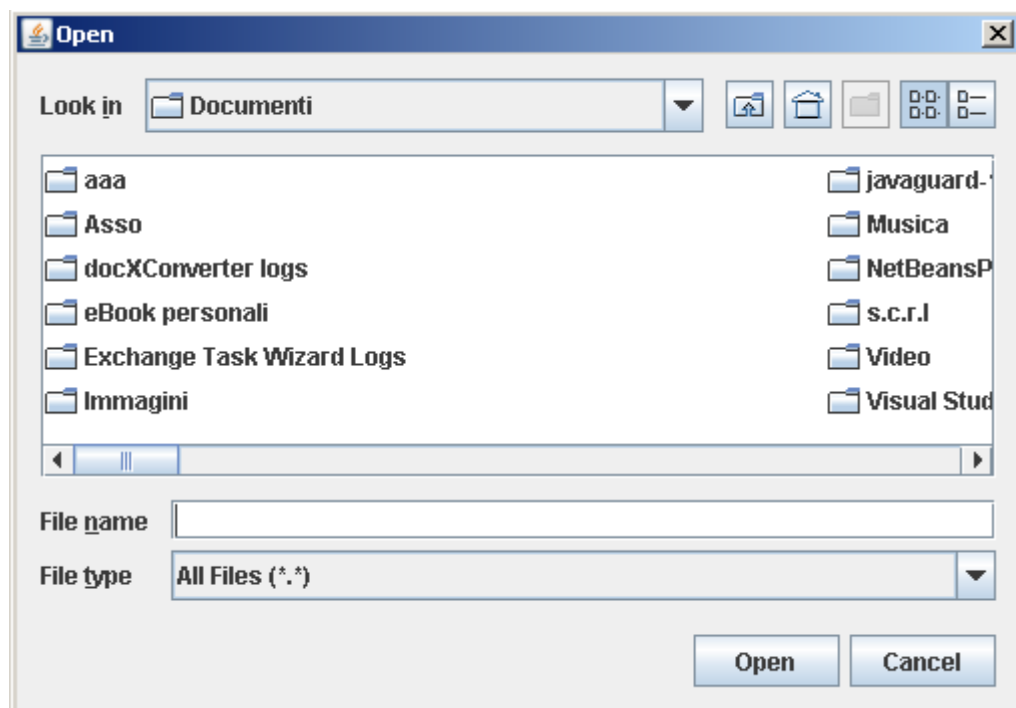
Will appear the **Replace Form**



To close the window press button **"Cancel"**

Select with button "... " the file/directory that you want to be added

1. Select in "**Look in**" the directory that contains the file that you want to be added
2. Select the file that you want to be added
3. Now the text box "**File name**" contains the name of the file with full path, then press button "**Open**"



The file name with complete path will display in the text box "**File**"

Then press the button "**OK**"

The selected file in the table will disappear and the new file will appear at the end of the table.

Remove File

To remove a file in an opened archive in the second part, select a file in the table and press the button **"Remove"**.

Will appear the **Remove Form**



To close the window without removing the file, press button **"Cancel"**

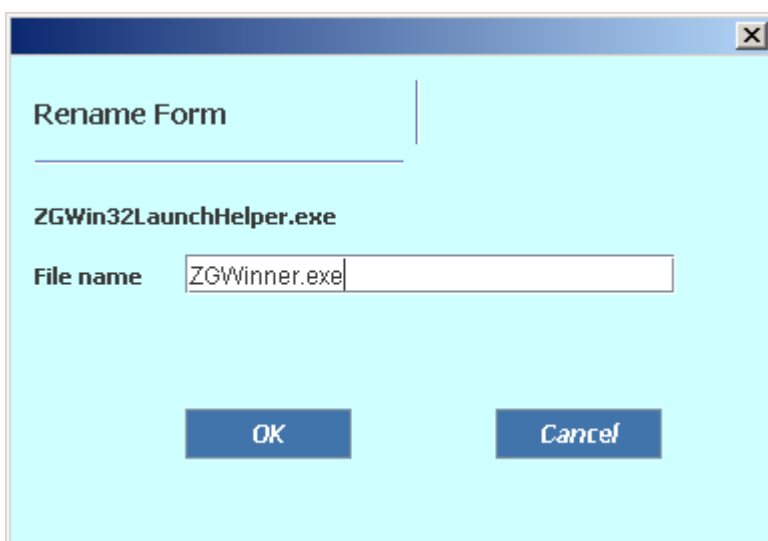
If you want to remove the file in the archive, press button **"OK"**

The file will be removed in the table

Rename File

To rename a file in an opened archive in the second part, select a file in the table and press the button **"Rename"**.

Will appear the **Rename Form**



To close the window press button **"Cancel"**

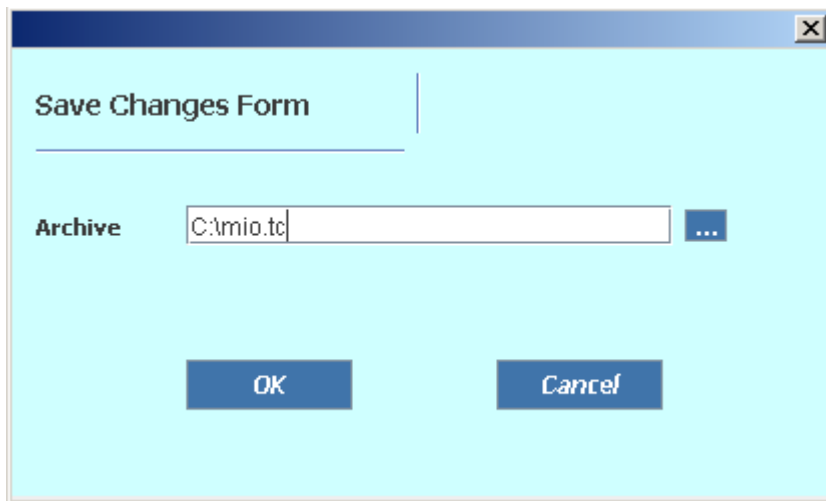
Write in the text box "File name" the new name for the selected file

Then press the button **"OK"**

The selected file in the table will rename without losing the position in the table.

Save Archive

To save the opened archive press the button **"Save Changes"** in the second part.
Will appear the **Save Changes Form**

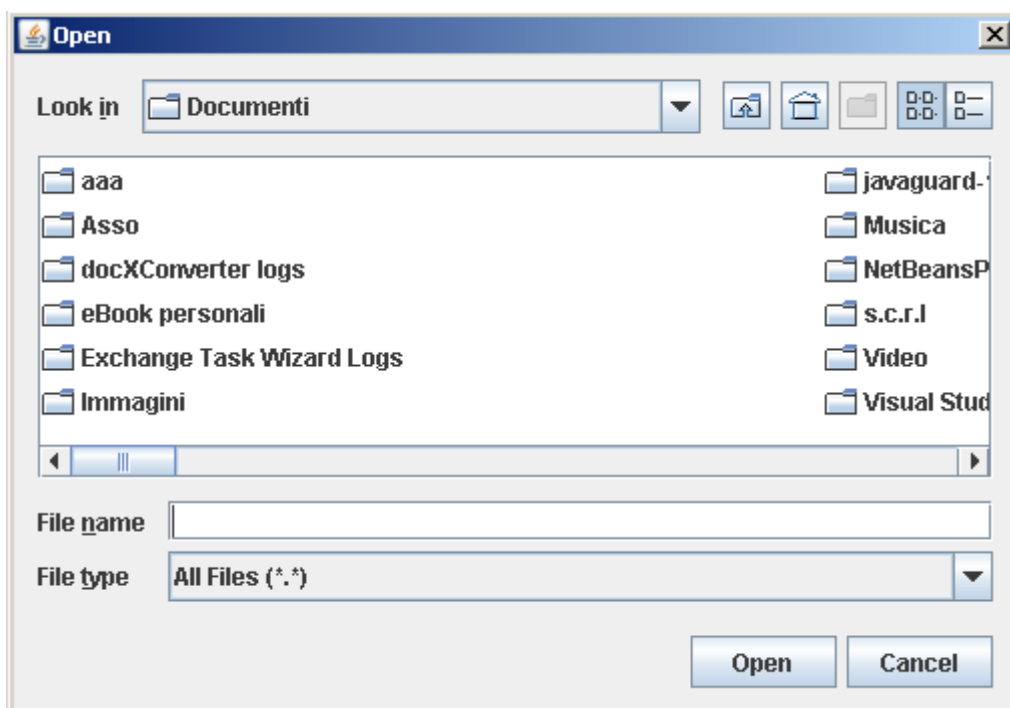


To close the window press button **"Cancel"**

If you want to save the present archive with the same name press button **"OK"**

If you want to change the name, select with button **"..."** the directory of the archive file that you want to be created

1. Select in **"Look in"** the directory that contains the directory that you want to use
2. Select the directory that you want to use
3. Now the text box **"File name"** contains the directory with full path, then press button **"Open"**



The directory with complete path will display in the text box "**Archive**".

You must complete with the name of the archive and the extension.

At the end of the operation the form disappear and the table will refresh.

Details

Note : Insert File, Replace File, Remove File and Rename File operations will be consolidated only after Saving Changes (see [Save Archive](#))

Command Line

Copyright (©) 2008-2050, Turbo Compressor v1.0, XEDIUS S.R.L. - Italy,
All rights reserved.

Usage:

<Command Shell> -mode="[c|d|a]" [-options] [output] [input]
Compression mode : <Command Shell> -mode="c" [-options]

Decompression mode : <Command Shell> -mode="d" [-options]

Archive mode : <Command Shell> -mode="a" [-options]

- Options:

-mode : execution mode.

-mode="c": compression mode

-mode="d": decompression mode

-mode="a": archive mode

-R : recurse subdirectories. Only in compression mode.

-h : hidden files. Only in compression mode.

-npl: normal path length (256 chars instead of 65536).

Only in compression mode.

-rp : relative path . Only in compression mode.

-log: log file (mandatory).

-log="<file name>": <file name> is log file name.

-part: part length (mandatory, >= 1MB <=10MB). Only in compression mode.

-part="<part length in bytes>": <part length in bytes>.

-overwrite: overwrite output files. Only in decompression mode.

-stop: stop file. Only in compression and decompression mode.

-stop="<file name>": <file name> is stop file name.

Execution ends when this file exists.

-cm : compression method. Only in compression mode.

-cm="0" : stored compression method.

Input is not treated.

Faster without compression.

-cm="1" : best performance compression method.

Use a one-level zip algorithm.

Fast with less compression.

-cm="2" : normal compression method.

Use a one-level zip and ascii-base algorithms.

Nominal speed with nominal compression.

-cm="3" : better compression method.

Use a multi-level zip and ascii-base algorithms.

Slower speed with better compression.

-cm="4" : maximum compression method (default).

Use a multi-level zip and ascii-base algorithms

with final compression.

Slowest speed with best compression.

-aeseck : AES encryption key (if not specified doesn't encrypt).

Only in compression and decompression mode.

-aesekey=<key> : <key> is the encryption key for AES algorithm.

<key> must be 16 characters and must contains numbers, alphabets and jolly characters (e.g.: aWSE&158zXcV\$375).

Compressed input is encrypted first to output.

-actionFile : action file. Only in archive mode. If not specified, list contents.

-actionFile=<file name> : <file name> is the name of the action file where are stored actions below.

Action file syntax :

-search : archive file search

-search=<file name> : <file name> is the name of the file to search.

-insert : archive file insert

-insert=<file name> : <file name> is the name of the file to insert.

-replace : archive file replace

-replace=<old file> -replaceWith=<new file>: <old file> is the name of the file to replace, <new file> is the name of the file to replace with.

-remove : archive file remove

-remove=<file name> : <file name> is the name of the file to remove.

-rename : archive file rename

-rename=<old name> -renameWith=<new name>: <old name> is the old name of the file, <new name> is the new name to rename with.

-virtual : virtual actions (doesn't modify archive, just simulate).

Works with output file with ".vrt" extension. Only in archive mode.

Examples:

Under Windows:

```
<Command Shell> -mode="c" -cm="4" -aesekey="aWSE&158zXcV$375" -R -h -rp -
log="C:\myarchive.tc.log" -stop="C:\mystopfile.txt" -part="5000000" "C:\myarchive.tc" "C:\ACE\"
<Command Shell> -mode="d" -aesekey="aWSE&158zXcV$375" -log="C:\myarchive.tc.log" -
stop="C:\mystopfile.txt" "C:\NEW_ACE\" "C:\myarchive.tc"
<Command Shell> -mode="a" -aesekey="aWSE&158zXcV$375" -actionFile="C:\myactionfile.act" -log="C:\
myarchive.tc.log" -stop="C:\mystopfile.txt" "C:\myarchive_new.tc" "C:\myarchive.tc"
C:\myactionfile.act:
-insert="C:\Documents and Settings\Administrator\Documents\Images\20383.jpg"
-replace="\"20383.jpg" -replaceWith="C:\Documents and Settings\Administrator\Documents\Images\220p
x-Barack_Obama.jpg"
-remove="\"xxx.zip"
-rename="\"amico" -renameWith="\"ggg"
```

Under Unix:

```
<Command Shell> -mode="c" -aesekey="aWSE&158zXcV$375" -cm="4" -R -h -rp -log="/myarchive.tc.log" -
stop="/mystopfile.txt" -part="5000000" "/myarchive.tc" "/ACE/"
<Command Shell> -mode="d" -aesekey="aWSE&158zXcV$375" -log="/myarchive.tc.log" -
stop="/mystopfile.txt" "/NEW_ACE/" "/myarchive.tc"
<Command Shell> -mode="a" -aesekey="aWSE&158zXcV$375" -actionFile="/myactionfile.act" -
log="/myarchive.tc.log" -stop="/mystopfile.txt" "/myarchive_new.tc" "/myarchive.tc"
/myactionfile.act:
-insert="/Documents/Images/20383.jpg"
-replace="\"20383.jpg" -replaceWith="\"Documents/Images/220px-Barack_Obama.jpg"
-remove="\"xxx.zip"
-rename="\"amico" -renameWith="\"ggg"
```

Credits

Technical Director :

Christian Minotto

Technical Writer/Supporter :

Massimo de Poli

By Xedius s.r.l.

Italy

Copyright © 2008-2050 All rights reserved