



## Upload SQL tables to Amazon SimpleDB

Upload SQL Server table schemas and its data to Amazon SimpleDB.

This tool exports SQL Server tables to Amazon AWS SimpleDB domains.

**SQLMgmt.com**

## 1. Prerequisites

The following components are required to run this tool properly. If you do not have the components on your machine, you can download from Microsoft Download Center.

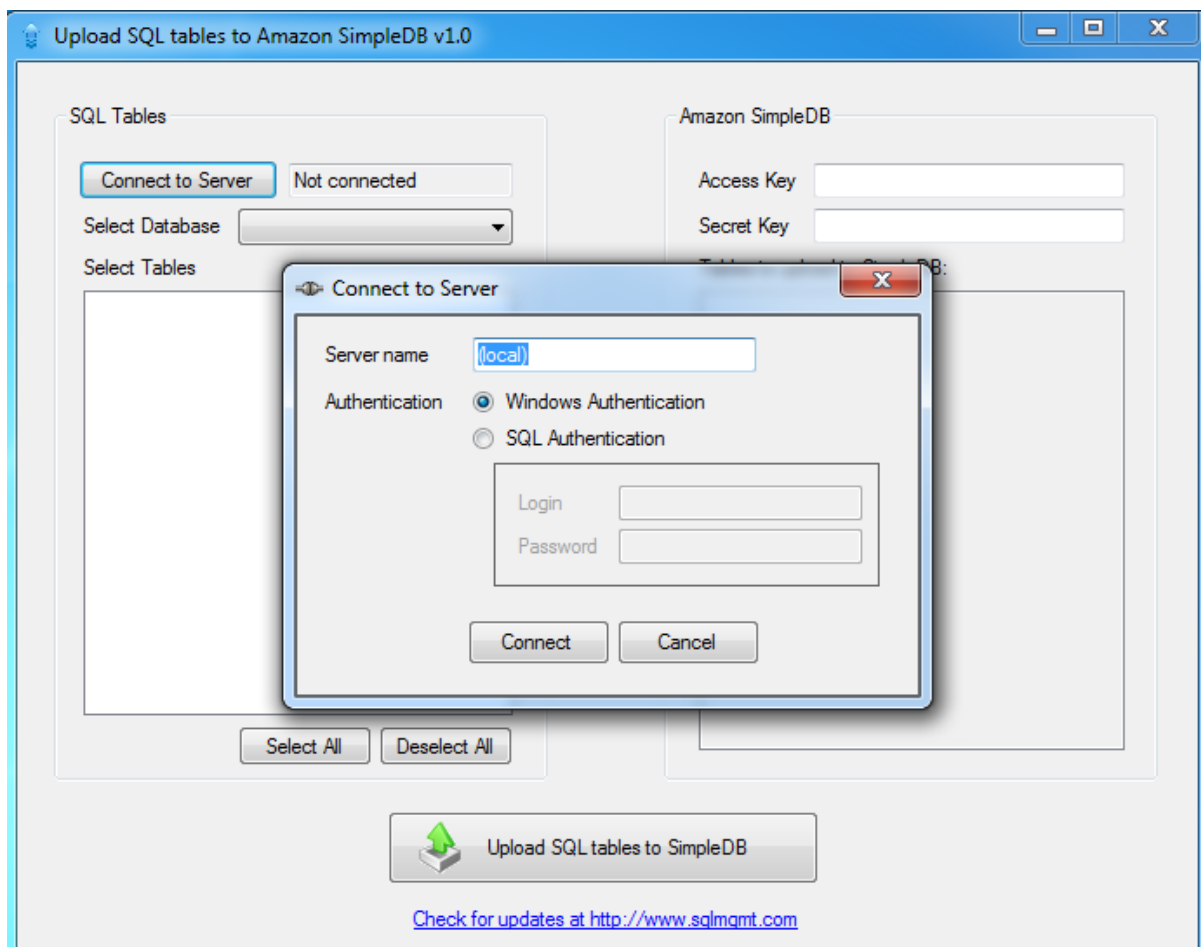
- .NET Framework 3.5 (Windows 7 has it by default)

## 2. SqlToSDB v1.0

- This tool helps you to upload SQL Server tables to Amazon SimpleDB.
- It creates a SimpleDB domain per SQL table and upload table data to the SimpleDB domain.
- It supports SQL Server 2012, SQL Server 2008, SQL Server 2008 R2, SQL Server 2005.

## 3. How to use

- Run **SqlToSDB.exe**
- Click [Connect to Server]

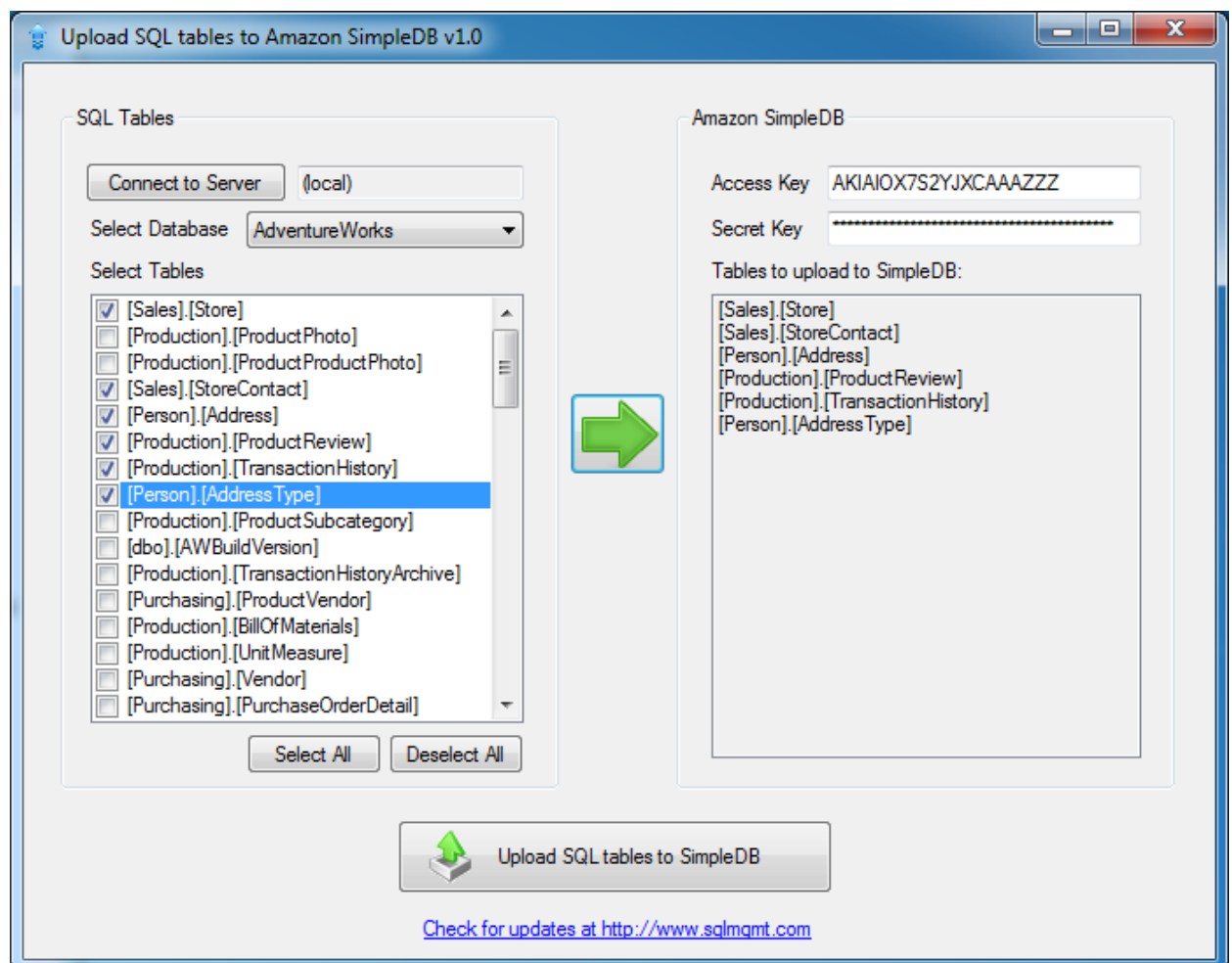


- Type [Server name]
- If you are using SQL Authentication, select [SQL Authentication] and enter Login and Password.
- Click [Connect].
- In main form, Select [Target Database]
- Select tables to upload. You need to select at least one table.

**NOTE:** Amazon SimpleDB allows maximum 250 domains. (If you need more domains, you need to submit special form to Amazon ) So you can upload less than or equal to 250 tables.

**NOTE:** Amazon SimpleDB allows maximum 1024 bytes per attribute which means a column size does not exceed more than 1024 bytes.

- Click GREEN ARROW button in the center.



- Type your [Access Key] in Amazon SimpleDB pane. You can check your Access Key and Secret Key in Amazon Web Services Management Console website.
- Click [Upload SQL tables to SimpleDB] button to start uploading.
- Progress bar will be shown during uploading. You can cancel upload by clicking Cancel.
- Once uploading is done, success message box will be shown.
- New version update can be found at <http://www.sqlmgmt.com>

**NOTE:** ItemName of Amazon SimpleDB domain will consist of primary key values of the table. If a table has one column primary key, ItemName of the domain will have the primary column value. If primary key consists of multiple columns, ItemName will be the combination of those column values, combined with underscore (\_).

**NOTE:** Any bug report or suggestion would be highly appreciated.

<http://www.sqlmgmt.com/contact.aspx>