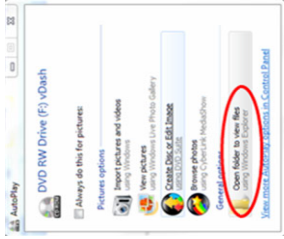
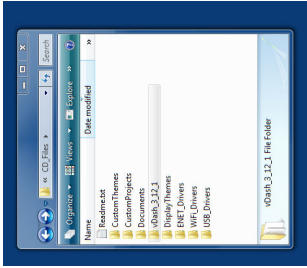


**Step 1:** Insert CD into computer drive slot. When the screen appears. Point mouse to "Open folder and view files" Left click mouse button



**Step 2:** Choose version of vDash you are loading and left click 2 times



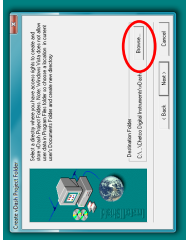
**Step 7:** Create vDash Project Folder appears.

You will need to select a location on your Computer to save personalized vDash settings. This location must be accessible by the current user and is usually in "My Documents" but can be in any non-system folder

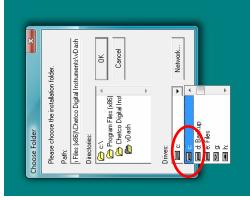
To change the directory start by Click on "Browse".

A: Select the Drive Letter left click on "C:\\" (or alternate drive)

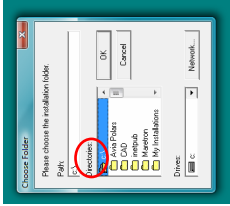
B: Double left click on the Drive letter to expand out the folder list and locate the "Users" Folder



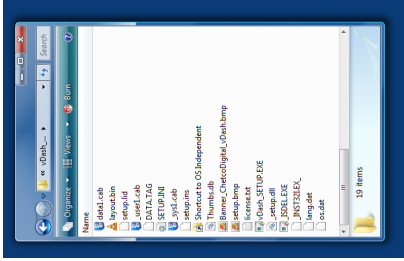
A



B



**Step 3:** Below screen will appear. Point mouse to vDash setup file. Double click on file.

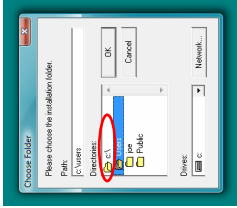


**Step 4:** On the Welcome screen click next



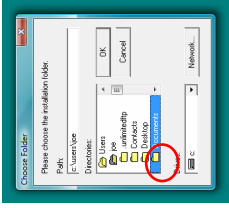
**Step 7 continued:**

C: Double left click on the User Name (In this case it was Joe)



C

D: Locate the Documents folder or any other desired sub folder. Double left click on "Documents" to select the target

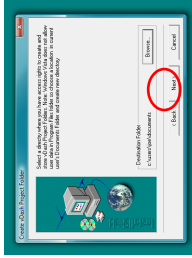


D

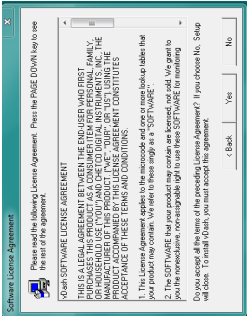
In this example the "My Documents" folder was selected to host the vDash Projects folder.

Click on next to accept the folder location and proceed.

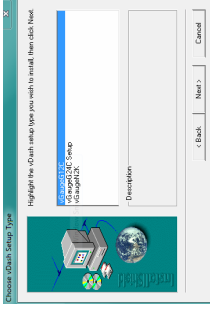
**It is important to remember what folder you select as you will need to refer to this folder in the future.**



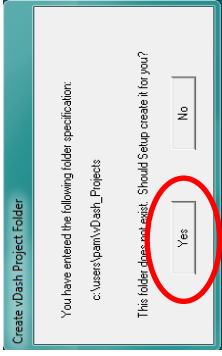
**Step 5:** On License acceptance screen click "Yes"



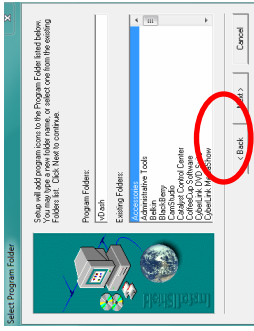
**Step 6:** vDash Setup screen appears. Choose your vGauge system. Highlight the gauge of your choice point your mouse to "Next" and left mouse click.



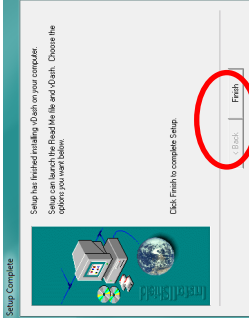
**Step 8:** The following screen will appear. Select and click on "Yes"



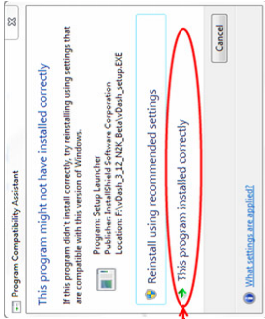
**Step 9:** Select program window will appear. Left single click "Next"



**Step 10:** vDash software installation status window will display installation graphs. When installation is complete the 'Setup Complete' window will appear. Click "Finish".



**Step 11:** After installation you may or may not see the following message. If you see this message disregard it and click on "This program installed correctly".

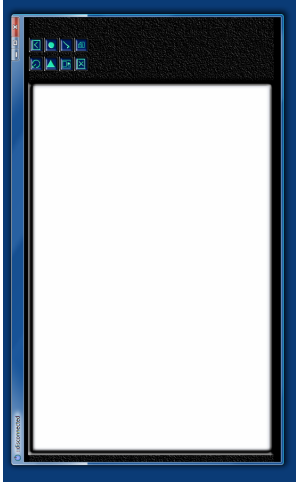
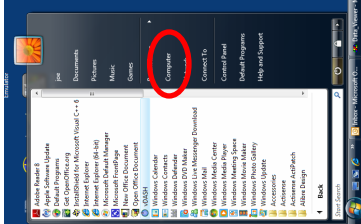


**Step 14:** vDash is now installed on your computer.

Go to your Windows programs page and locate the vDash icon and single click. This will launch the vDash program.

Once launched you will see the screen below. This is the vDash main screen.

Eight Tool Icons are located on the right hand side of the display area



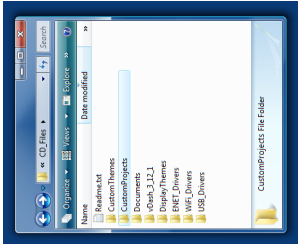
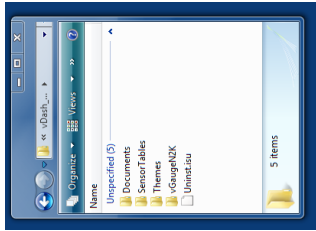
**Step 12:** vDash uses Project Folders to store customized settings and configurations.

After Installation, several folders are created in the target vDash Projects Folder

Themes contains a selection of graphics styles and backgrounds for design of custom display screens

Sensor Tables contains calibration files for a variety of sensors

Copy any customized Project folders or Themes from the CD to the target vDash Project folder created during installation



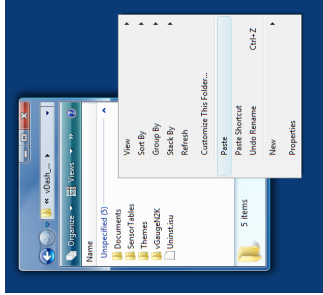
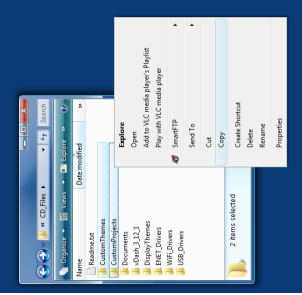
**Step 13:** Locate and open the vDash Project folder specified during installation.

Select the Custom Projects Folder on the CD and "Right Click" with the mouse button and select "COPY"

Now select the target vDash Project folder and again "Right Click" and select "PASTE"

Repeat for any Custom Themes Folders

Later, you will use vDash Preferences to select any custom Project or Themes



Advanced Marine Instrumentation

# vDash Quick Start Guide

**Step 15:** vDash can display both Live data and data from a pre-recorded Log File button.

To view an existing Log File, Click the Playback Button located in the upper left hand corner of the tool palette



**Step 16:** To view help information on the eight tool pallet buttons, click the logo icon in the upper Left Hand corner of the title bar and select "About vDash"

The vDash Users Manual is located in the "Documents" folder in the vDash Projects Folder