

V.R.C.C.

Video Remote Computer Camera Quick Start Tutorial

Connecting over Bluetooth/Cable and setting up HTTP Web Camera/FTP Uploader

1. Connecting over Bluetooth

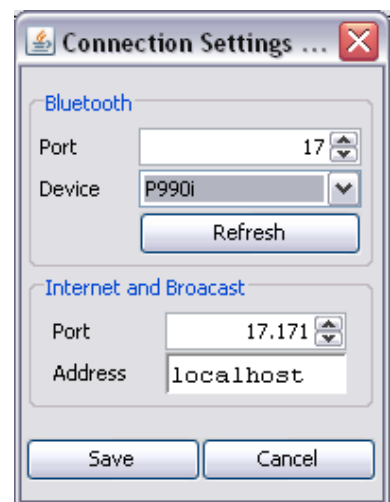
1.1. Phone setup

- Enable Bluetooth on the phone. If the phone was not paired with the PC set it to “discoverable” mode
- Start VRCCServer on the phone and from the menu tap **Start – Listen on Bluetooth**



1.2. PC setup

- Bluetooth device must be installed and enabled on PC to continue
- Start PC application and click **Settings – Connection** from the menu
- Click the **refresh** button in the **bluetooth** frame.
- The **refresh** button will be disabled, wait a while, after devices are discovered the **refresh** button will be enabled again
- Now, from **device** drop down list select your phone like in the image on the right and click **Save**
- Click **Start – Connect over Bluetooth**



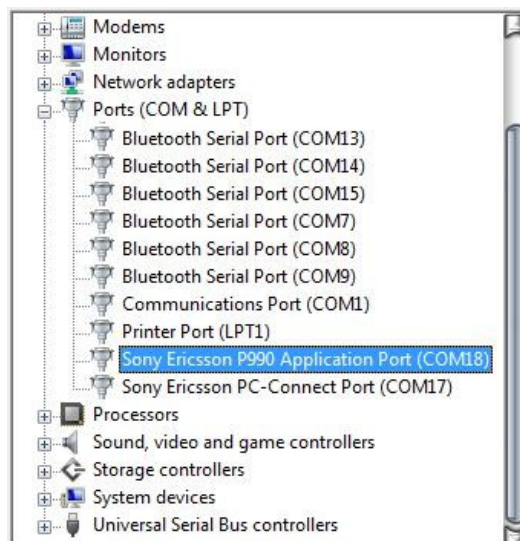
1.3. Notes

- Phone setup must be done before PC setup
- If you already connected once, only the last step in each setup (listen on phone and then connect on PC) are required to connect, unless the phone or PC was changed.
- In symbian screenshots instead of “Connected, recording” you should see “VRCCServer” because images were taken with V.R.C.C. and it had to be started.
- There might be some issues if you are using BlueSoleil stack, if you get “Device service not discovered message” please access this page to let me know: [vote BlueSoleil support](#)

2. Connecting over cable

2.1. Setup

- **PC Suite** has to be installed. Connect the phone with the USB cable in **Phone Mode**
- Start V.R.C.C. server on phone and tap **Start – Listen on Cable**
- Now, you need to find what port with **Device Manager**. One way to open it is from **Start menu**, right click **My Computer** and select **Manage** then **Device Manager** from the list on the left. Like in the picture on the right, expand **Ports (COM & LPT)** and look for the phone’s **Application Port**.
- Start PC client and select **Settings – Connection** and enter you phone’s application port number as **Comm Port** in **Cable** frame.
- Select “Start” – “Connect over Cable” from PC client



2.2. Notes

- After you disconnected or a connect attempt failed, you may have to remove the USB cable and insert it again before trying to connect (or the program crashes)
- It may not work in conjunction with other software that uses the cable (except PC Suite)
- After you succeeded connecting once you do not have to set the port again (unless you change the phone or re-install PC Suite), just listen on the phone and connect on PC.

3. Setting up HTTP Web Camera

3.1. Starting

- A connection has to be started (as above for Bluetooth or cable)
- Click **Settings – Broadcast** in PC client
- In **HTTP Server** frame you may change the **port** and **path** or leave them as they are (by default, “17180” for port and “webcam” for path)
- Click **start**

3.2. Using

- First you must know your IP or host name. The best way to do this is by accessing a page like <http://viewmyip.com>
- To view the camera, someone has to enter the following address in a browser: `http://your-ip-or-hostname:port/path`
- As an example, considering you started with the default values, you can test the webcam on your PC by accessing <http://localhost:17180/webcam>

3.3. Notes

- Settings are applied when the server is started (to change the path and/or port you must stop and then start the server again)
- This was tested only with Firefox and Internet explorer, if frame rate or image quality is low try a different browser to see if that was the cause.

4. Setting up FTP Uploader

4.1. Starting

- A connection has to be started (as above for Bluetooth or cable). You also need a server that accepts ftp file uploads
- Click **Settings – Broadcast** in PC client
- In **FTP Uploader** frame set **server** in this form : **user:password@hostname:port** (if port is omitted, “21” will be used). For example, if you have an account named “foo” with password “bar” at “ftp.my-server.com” on the default port then “foo:bar@ftp.my-server.com” has to be entered. You may also modify **path** or leave the default “webcam” (some servers may require you to place files in a subfolder like this: “htdocs/webcam”).
- Click **start**

4.2. Using

- First you must know the **URL of your account**, refer to your hosting provider's manual for this. Usually, for the example above, it is "user.my-server.com" (but you may have your own domain).
- To view the camera, someone has to enter the following address in a browser: "http://ACCOUNT-URL/PATH.html". For the example above http://foo.my-server.com/webcam.html

3.3. Notes

- Settings are applied when the uploader is started (to change the path and/or server you must stop and then start the uploader again)
- This was tested only with Firefox and Internet explorer, if frame rate or image quality is low try a different browser to see if that was the cause.