



Installation Manual




Version 1.0.0.4




Contents

1	Introduction.....	3
2	Installation Requirements	4
2.1	Recommended Hardware.....	4
2.2	Software Requirements.....	4
2.3	Permissions.....	4
2.4	Enable Session States	4
3	Installing the Weather Station web part.....	5
3.1	Deploying the Solution	5
4	Configuring Weather Station.....	9
4.1	Activate the Site Collection Feature.....	9
4.2	Adding Locations.....	9
5	Uninstalling the Weather Station web part.....	12
5.1	Deactivate the Feature.....	12
5.2	Uninstall the Solution	13

1 Introduction

Weather Station for SharePoint 2007 enables users to view the weather forecast for their selected destination for the coming three days starting from the current day.

Weather Region	Today	Tomorrow	Saturday
<div> <div>United Kingdom</div> <div>London</div> </div>	 17°C 62.6°F	 15°C 59°F	 16°C 60.8°F
High Temp	17°C 62.6°F	15°C 59°F	16°C 60.8°F
Low Temp	7°C 44.6°F	10°C 50°F	8°C 46.4°F
Chance of precipitation	10%	5%	25%

Weather Region	Today	Tomorrow	Saturday
<div> <div>Germany</div> <div>Kiel</div> </div>	 13°C 55.4°F	 12°C 53.6°F	 14°C 57.2°F
High Temp	13°C 55.4°F	12°C 53.6°F	14°C 57.2°F
Low Temp	8°C 46.4°F	6°C 42.8°F	10°C 50°F
Chance of precipitation	60%	40%	90%




Weather Region	Today	Tomorrow	Saturday
<div> <div>United States</div> <div>New York, NY</div> </div>	 18°C 65°F	 20°C 68°F	 23°C 74°F
High Temp	18°C 65°F	20°C 68°F	23°C 74°F
Low Temp	11°C 52°F	16°C 61°F	14°C 58°F
Chance of precipitation	0%	40%	60%

Figure 1 – Weather Station

This installation manual is intended for SharePoint Administrators installing the Weather Station web part on a Microsoft Office SharePoint Server 2007 server farm

2 Installation Requirements

Before proceeding with the Weather Station solution installation, please ensure the following requirements are met.

2.1 Recommended Hardware

Performance of Weather Station may vary depending on the available resources. The following hardware is a guide and may vary depending on the number of people within your organisation.

- Web front-end servers and Application servers
 - Minimum Dual 2.8 GHz Pentium 4 CPU
 - Minimum 2Gb RAM
- Database servers
 - Minimum Dual 2.8 GHz Pentium 4 CPU
 - Minimum 2Gb RAM

2.2 Software Requirements

The following software **MUST** be installed on the server farm before proceeding with the installation.

- Microsoft Office SharePoint Server (MOSS) 2007 (Standard or Enterprise)
- Microsoft Internet Information Services (IIS) 6.0 or later
- .Net Framework 3.5

2.3 Permissions

The following permissions are required to complete all the steps outlined in this installation manual.

- Member of the local administrators group on the server where the setup wizard is run.
Required to complete the installation only.
- Farm Administrator with rights to add solutions and manage solutions deployment.
Required during installation and to upload/manage license keys in License Manager in order to activate a product licenses.
- SSP Administrator with rights to modify search settings.
Required to create a new Managed Property, initial crawls and update the search scope.
- SSP Administrator with rights to manage user profiles.
Required to create a new Managed Property and import user profiles.
- A site collection administrator on the site collection where the product will be installed.
Required to activate the Site Collection Feature.

2.4 Enable Session States

It is recommended that **Session States are enabled** to ensure that the weather web part displays the weather for casts. By default, Session States are enabled. To check whether Session States are enabled please refer to the following Microsoft TechNet article.

<http://technet.microsoft.com/en-us/library/cc263527.aspx>

3 Installing the Weather Station web part

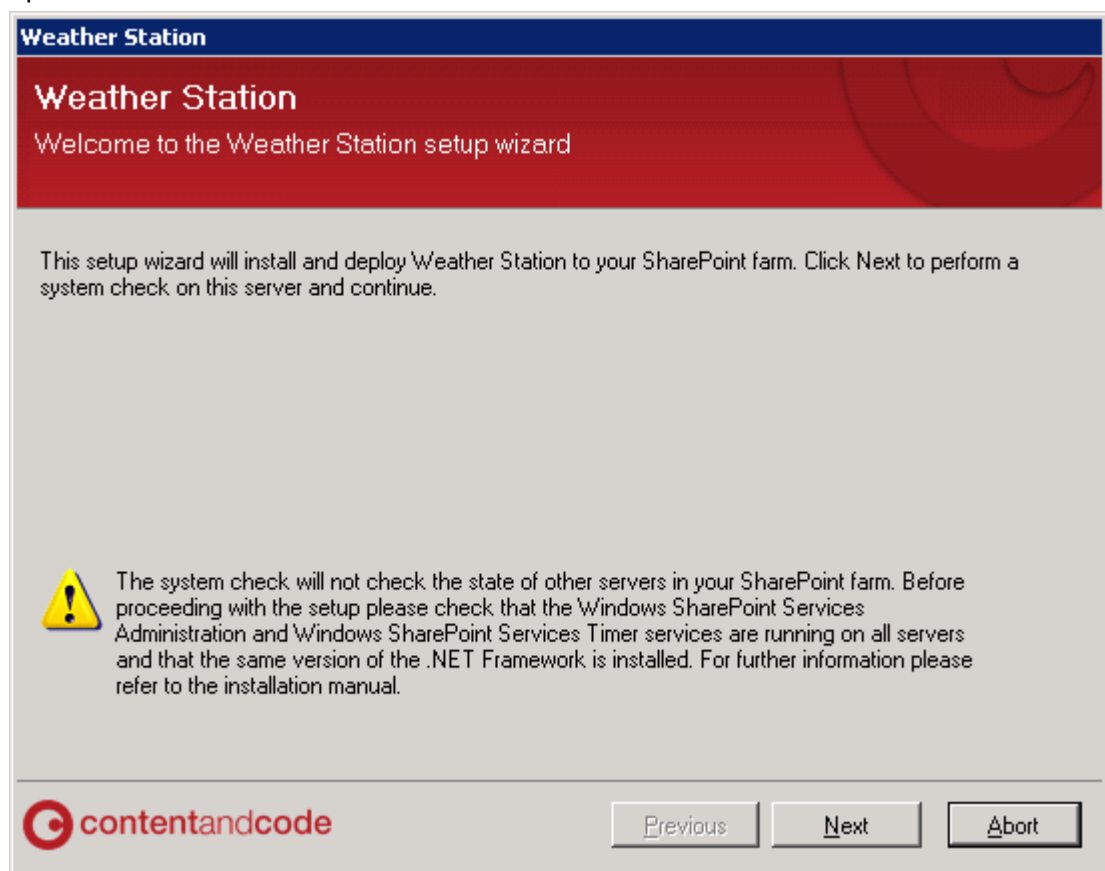
This section outlines the procedure for installing Weather Station to a single Microsoft Office SharePoint Server 2007

Important: Before proceeding with the installation, please check that the account you are using to install Weather Station has the appropriate permissions outlined in section **2.3 – Permissions**.

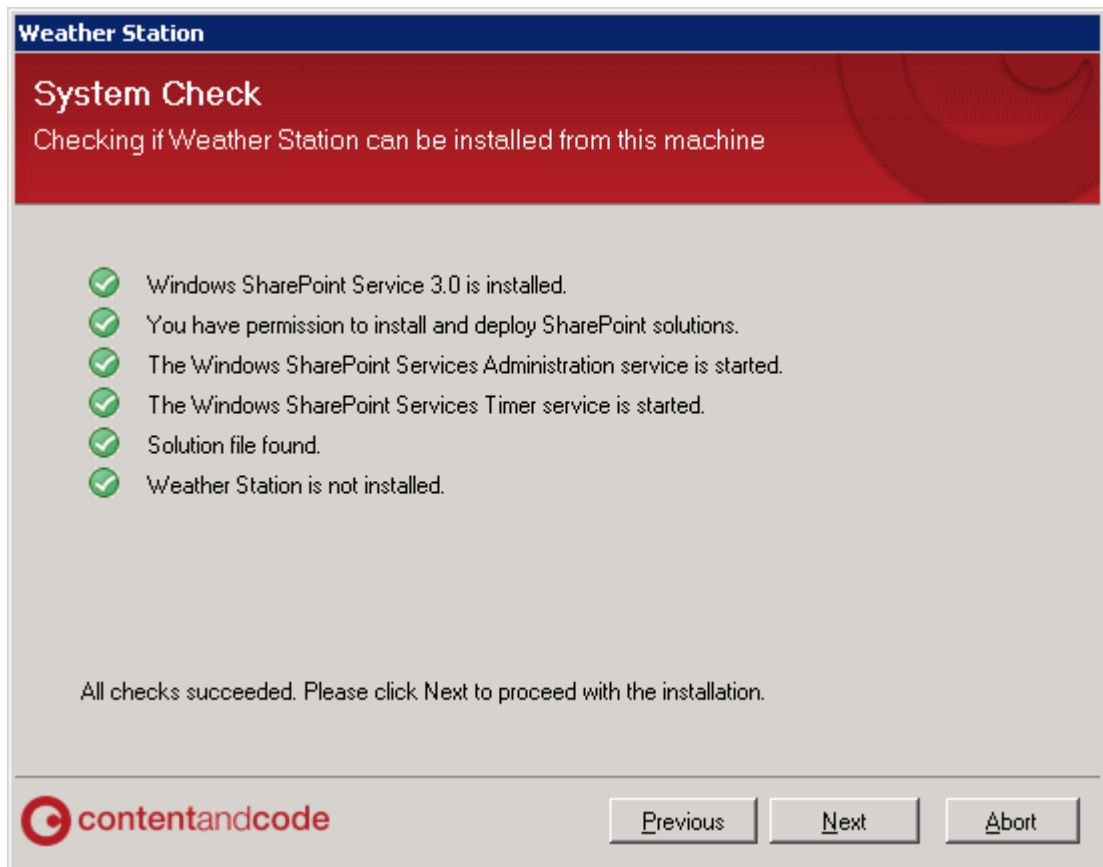
3.1 Deploying the Solution

Follow these steps to install and deploy Weather Station to one or more web applications.

1. Open **CcWeatherForecastInstaller.exe**



2. Click **Next**



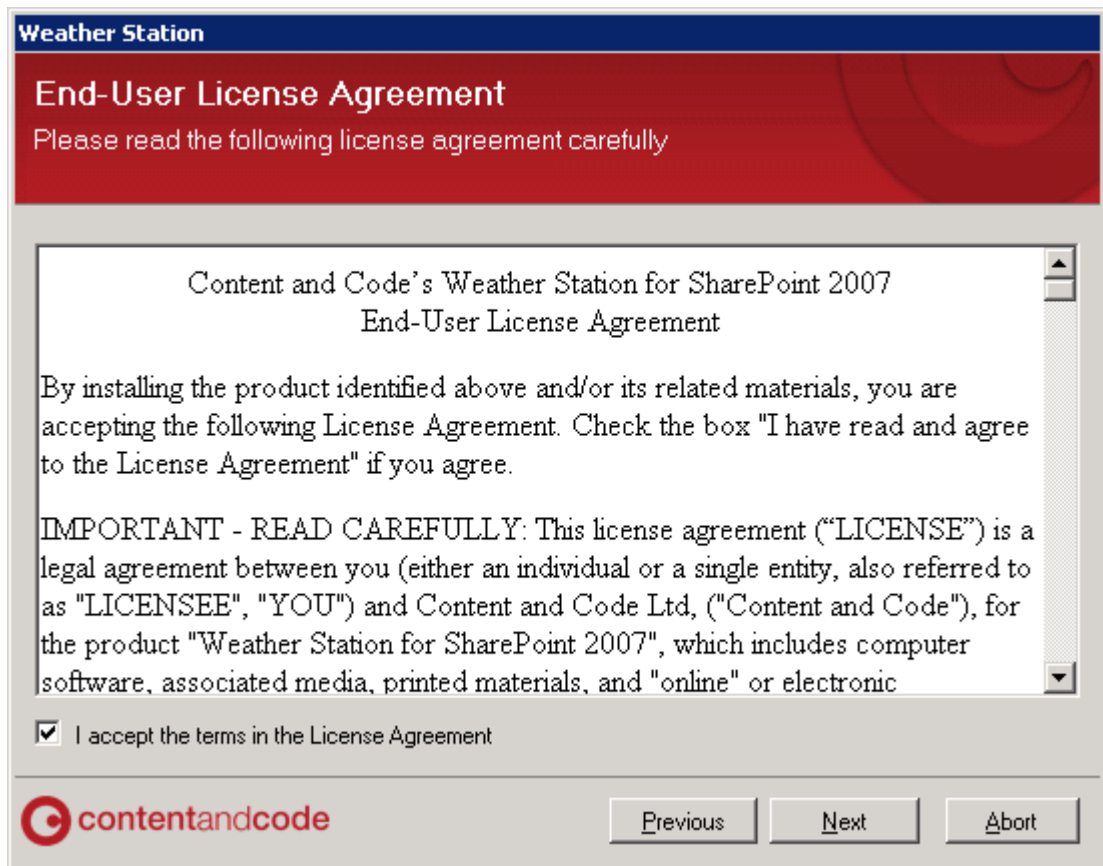
3. The setup will perform a systems check to ensure the server meets the installation requirements. If one of the checks fails, simply abort the installation, and then resolve the issue before running the setup again.

Important: When installing to a SharePoint farm running on **Windows Server 2008** with **User Account Control (UAC) enabled**, the installation permissions must be **elevated** using the Rick-click > Run as administrator option (see below)

1. OverChart Setup	06/02/2009 15:25	Application	800 KB
Open	06/02/2009 15:28	CONFIG File	1 KB
Run as administrator	06/02/2009 17:59	Text Document	5 KB

Failure to do so will result in a System Check error for the Windows SharePoint Service Timer service check.

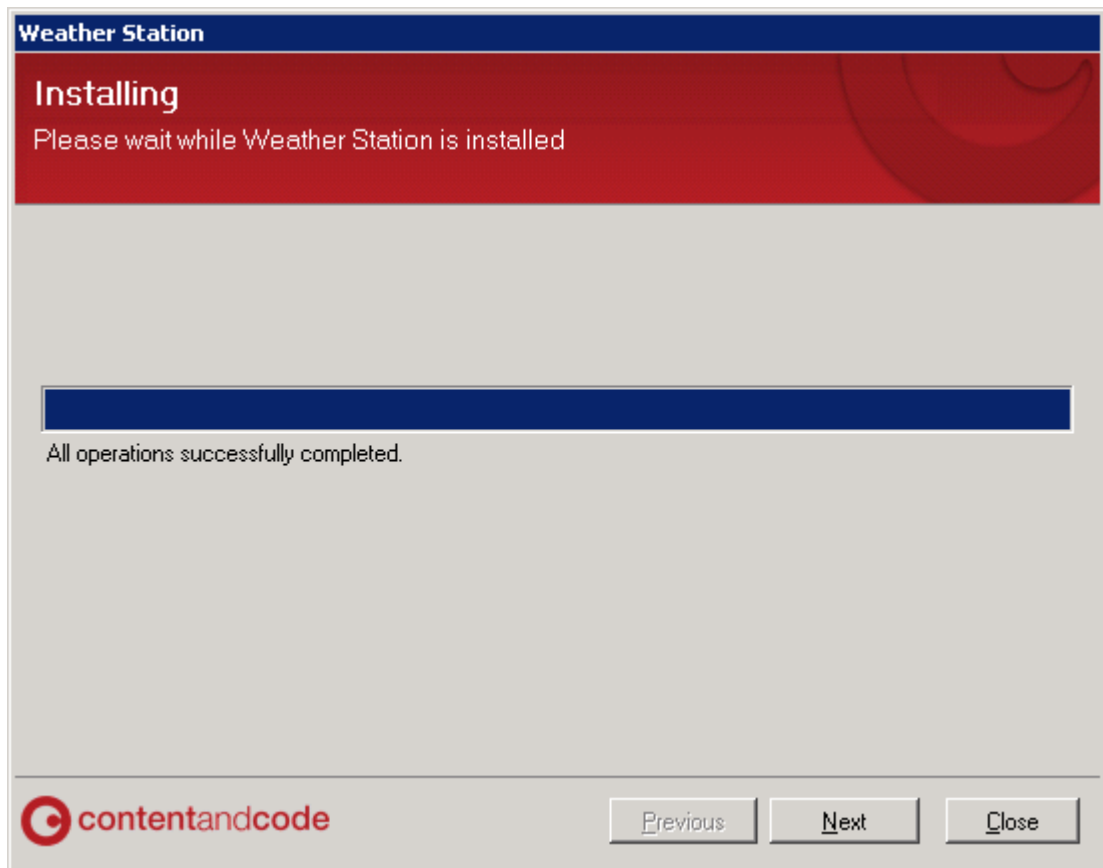
4. When the System Check is successfully complete, click **Next**
5. Read and then agree to the terms of the licensing agreement by selecting select **I accept the terms in the License Agreement.**
6. Click **Next**



7. Select the Web Application where you intend to deploy Weather Station.
8. Click **Next**

Note: If you need to install Weather Station to more than one web application, select multiple web applications.

9. When the installation is complete, click **Next**



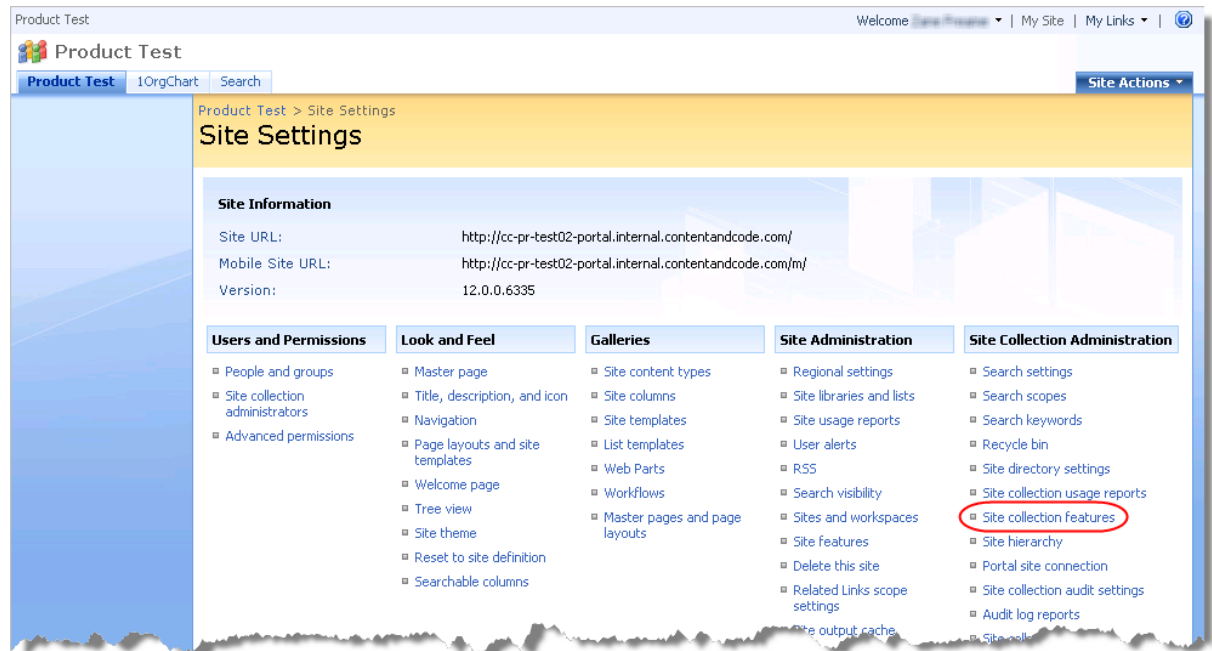
9. Click **Close** to complete the installation or **Next** to view the installation log

4 Configuring Weather Station

4.1 Activate the Site Collection Feature

Follow these steps to activate the Weather Station site collection feature.

1. Open the top level site in your site collection.
2. Go to **Site Actions > Site Settings > Modify All Site Settings**.
3. Under **Site Collection Administration**, click **Site Collection Features**.



4. Click **Activate Weather Station Web Part**.



Congratulations!

The Weather Station web part is now available and ready to use.

4.2 Adding Locations

Weather locations are stored in the Weather Locations list which can be found at the top level of the site collection where the Weather Station has been activated.

Portal > All Site Content

All Site Content

Create View: All Site Content

Name	Description	Items	Last Modified
Document Libraries			
Documents	This system library was created by the Publishing feature to store documents that are used on pages in this site.	0	3 weeks ago
Form Templates	This library contains administrator-approved form templates that were activated to this site collection.	0	3 weeks ago
Images	This system library was created by the Publishing feature to store images that are used on pages in this site.	1	3 weeks ago
Pages	This system library was created by the Publishing feature to store pages that are created in this site.	1	18 hours ago
Site Collection Documents	This system library was created by the Publishing Resources feature to store documents that are used throughout the site collection.	0	3 weeks ago
Site Collection Images	This system library was created by the Publishing Resources feature to store images that are used throughout the site collection.	0	3 weeks ago
Style Library	This system list was created by the Publishing Resources feature to store custom XSL styles and cascading style sheets.	64	3 weeks ago
Picture Libraries			
There are no picture libraries. To create one, click Create above.			
Lists			
10OrgChartUserInfoList	This list contains the information of all the users that is to be displayed in 10OrgChart.	4	2 weeks ago
Contacts	Create a contacts list when you want to manage information about people that your team works with such as customers or partners. You can share information between your contacts list and Windows SharePoint Services-compatible contacts programs.	0	3 months ago
Content and Structure Reports	Use the reports list to customize the queries that appear in the Content and Structure Tool views	7	6 weeks ago
Events	Use the Events list to post information about meetings, deadlines, and other events related to this area.	1	3 months ago
Links	Create a links list when you have links to Web pages or other resources that you want to share.	0	3 months ago
Reusable Content	Items in this list contain HTML or text content which can be inserted into web pages. If an item has automatic update selected, the content will be inserted into web pages as a read-only reference, and the content will update if the item is changed. If the item does not have automatic update selected, the content will be inserted as a copy in the web page, and the content will not update if the item is changed.	0	3 months ago
Tasks	Create a tasks list when you want to track a group of work items that you or your team needs to complete.	0	3 months ago
Weather Locations	This list is used to store the MSN RSS weather feed information.	269	11 minutes ago
Workflow Tasks	This system library was created by the Publishing feature to store workflow tasks that are created in this site.	0	3 months ago
Discussion Boards			

To add new records select the **Weather Locations** list in the **All Site Content** screen.

Portal > Weather Locations

Weather Locations

This list is used to store the MSN RSS weather feed information.

New Actions Settings

New Item
Add a new item to this list.

RSSLink

Aalst ! NEW	http://weather
Ajaccio ! NEW	http://weather
Albacete ! NEW	http://weather
Almere ! NEW	http://weather
Amersfoort ! NEW	http://weather
Amiens ! NEW	http://weather
Amsterdam ! NEW	http://weather
Amsterdam Metropolitan Area ! NEW	http://weather
Anchorage, AK ! NEW	http://weather
Anderlecht ! NEW	http://weather
Angers ! NEW	http://weather
Ans ! NEW	http://weather

In the new Item screen supply:

DisplayText - The name of the location which you want to appear in the Weather Station

RSSLink - The MSN RSS link for the location

Country - The name of the country in which the location is located

📎 Attach File | ABC Spelling... * indicates a required field

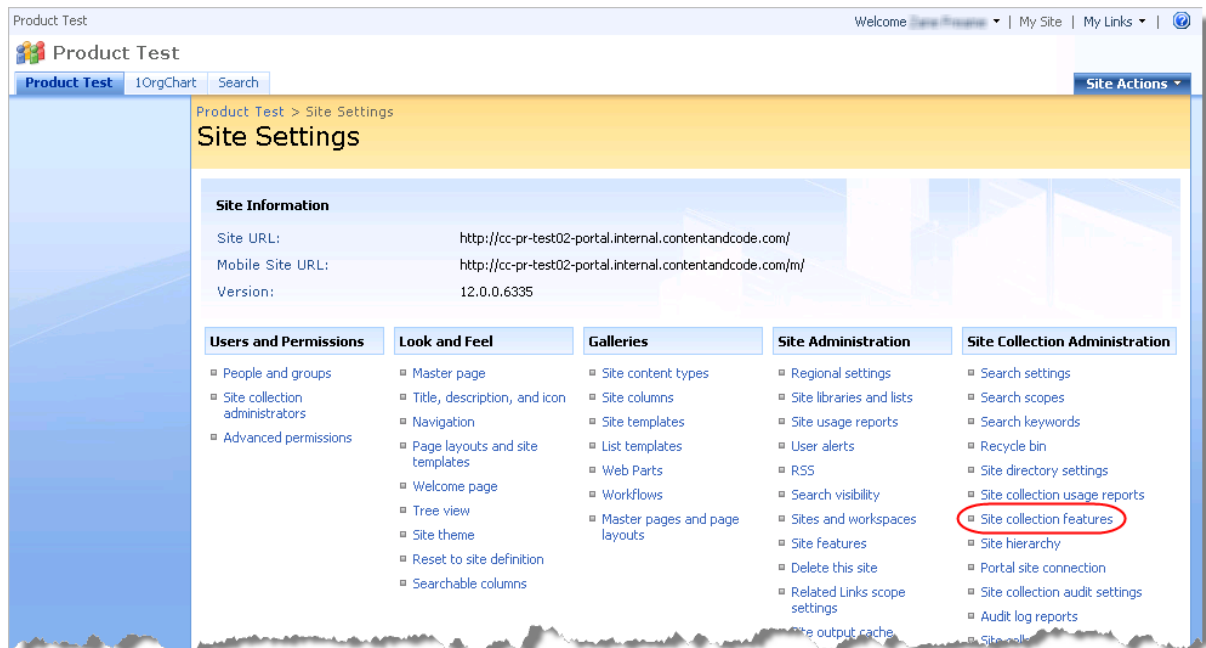
DisplayText *	Sydney <small>The text which is shown in the selection control.</small>
RSSLink	http://weather.msn.com/RSS.aspx?wealocations=wc:ASXX0112&w <small>The RSS Link</small>
Country *	Australia

5 Uninstalling the Weather Station web part

5.1 Deactivate the Feature

To prevent users from adding additional Weather Station web parts to pages, you can deactivate the Weather Station. This will remove the web parts from the web part gallery but existing instances (i.e. web parts that have already been added to a page) will continue to function.

1. Open the top level site in your site collection
2. Go to **Site Actions > Site Settings > Modify All Site Settings**
3. Below the section **Site Collection Administration**, click **Site Collection Features**



4. For the Weather Station feature, click **Deactivate**



5. When prompted with a warning, click **Deactivate this feature**

Warning



You are about to deactivate the Weather Station feature.

If you deactivate this feature, any user data or customizations associated with this feature might be lost. In addition, any active features that depend on this feature might fail to function.

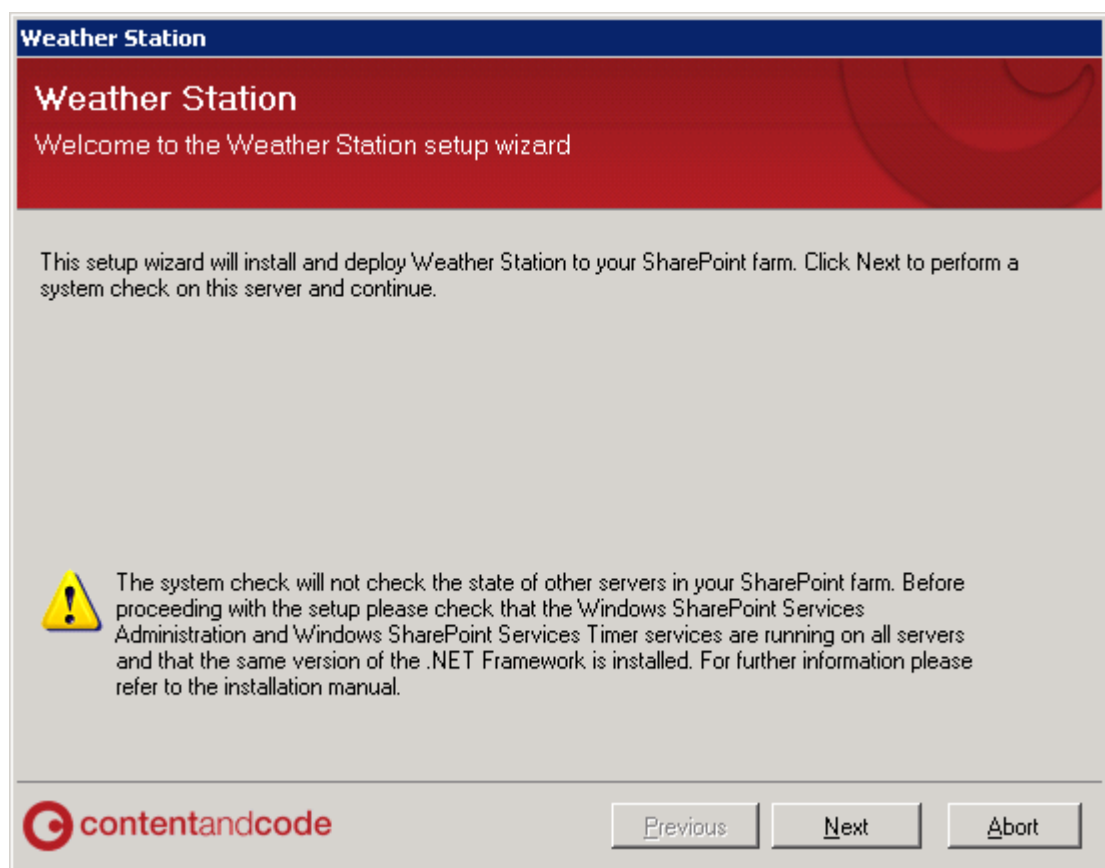
[Deactivate this feature](#)

5.2 Uninstall the Solution

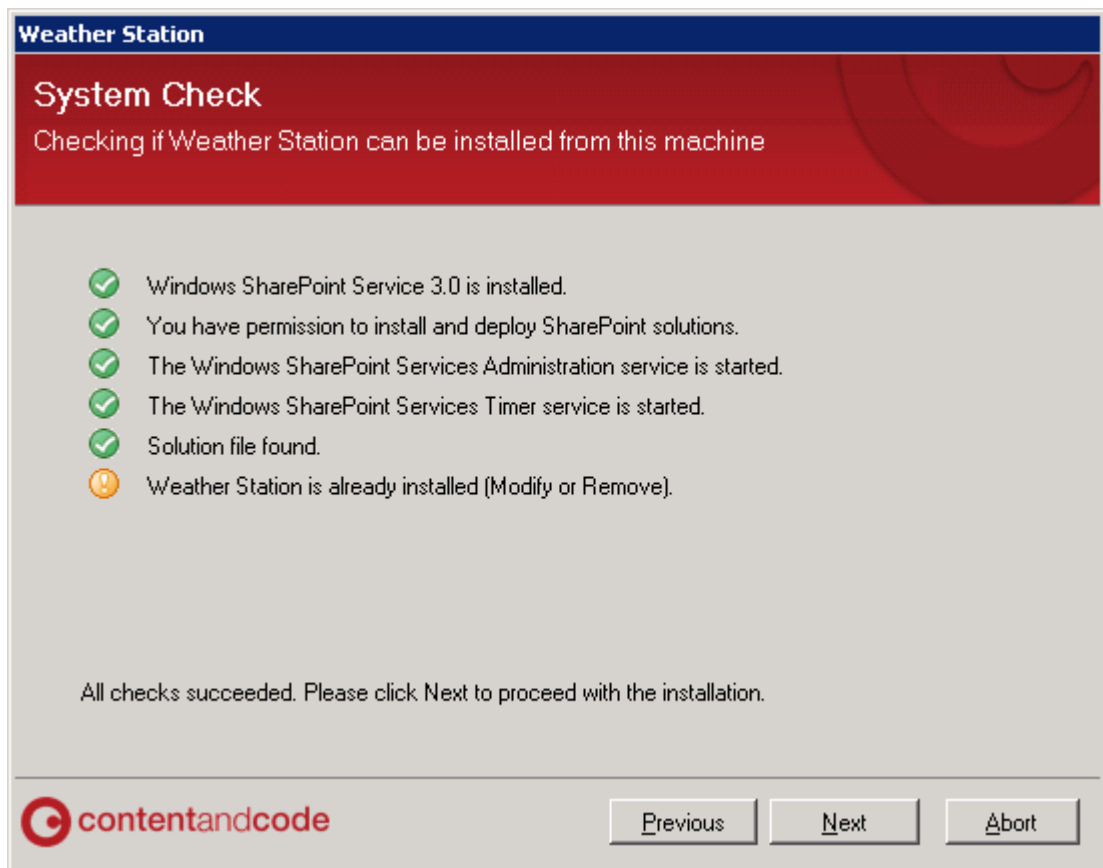
To completely un-install Weather Station from your farm, log on to the server from which you installed Weather Station.

and locate your installation file and follow these steps.

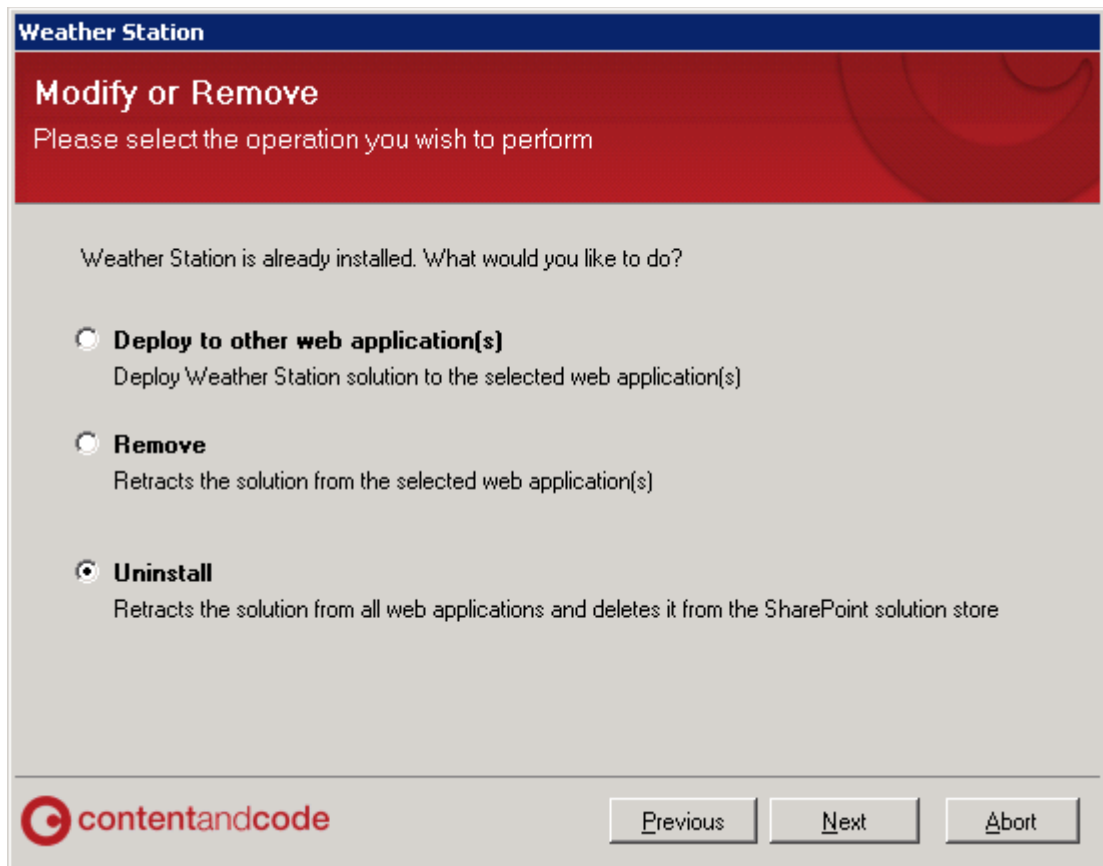
1. Run **CcWeatherForecastInstaller.exe**
2. Click **Next**



3. Once the System Check is complete, click **Next**

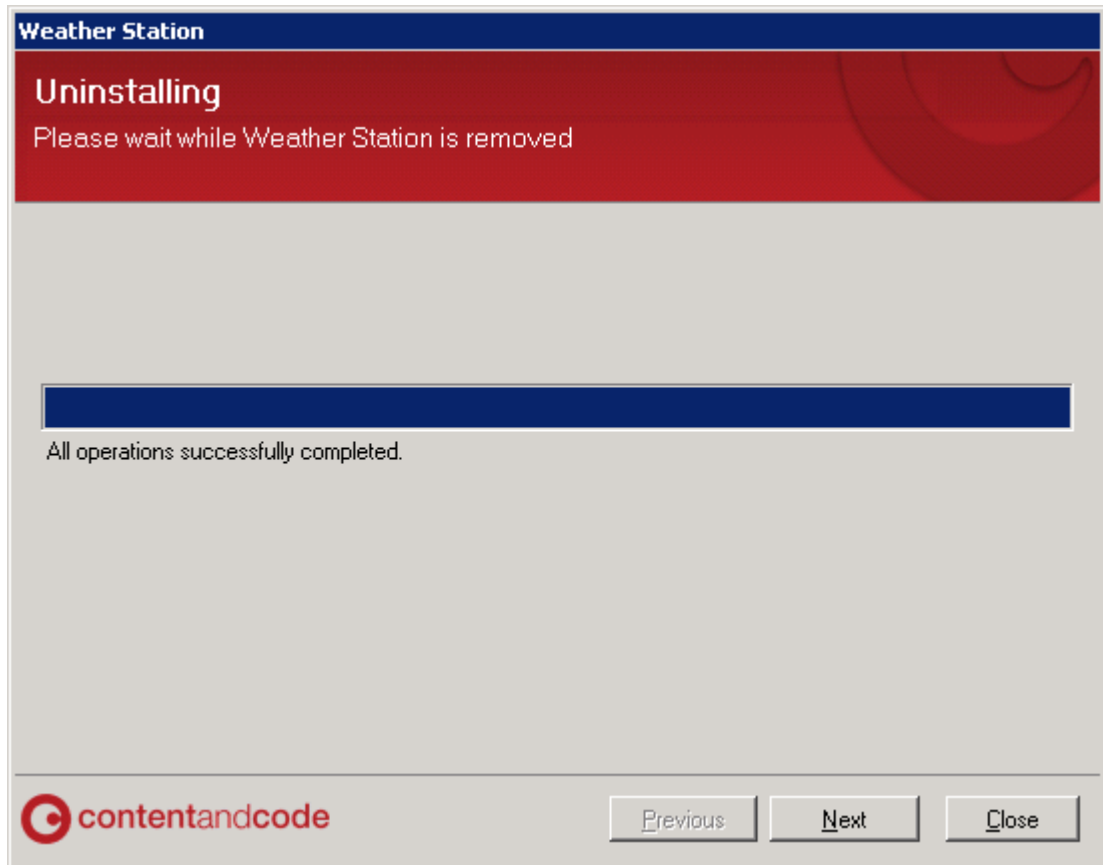


4. Select **Uninstall**
5. Click **Next**



6. Once the uninstall is complete, click **Next**
7. The details of the uninstall procedure will be displayed

8. Click **Close**



Note: Any Weather Station web parts that have been added to your site must be deleted manually.