

WinACCESS Lite 2

Quick Handy Guide

QUICK NOTIFICATION:

DO NOT USE XP MODE IF YOU ARE USING WINDOWS VISTA, AND DO NOT USE VISTA MODE IF YOU ARE USING WINDOWS XP. EACH MODE IS SPECIALLY DEVELOPED TO ADAPT TO SEPERATE OPERATING SYSTEMS. SWITCHING TO VISTA MODE WHEN USING WINDOWS XP **WILL NOT YIELD ANY VALID DATA.**



Need to reinstall your operating system? Need to upgrade your system, and fix all those nasty errors?

Now with Windows Vista moving in and claiming the throne to which XP held for so long, the Windows XP operating system is becoming increasingly hard to find, and when you do find it, it is likely you will realise that you cannot afford it. Even at the most modest software retailers, you will always find the Windows Installation CD (be it Vista in particular or XP) always comes with a hefty price tag.

Because of this factor, many manufacturers need to sell you their models at the best possible price without any unnecessary, additional fees in order to create demand for their computers. In order to achieve this, a vital yet expensive element needs to be overlooked on purchase; the Windows Installation CD. Though this is certainly not the case for all people who purchase their computers from retailers, many people do find that they have bought a computer that does not feature the Windows CD. However, one thing everybody can agree on, including the manufacturers of our computers, is that the Windows Installation CD is an important, if not sometimes required necessity when our systems give up on us or when it just needs a fresh install. The Windows Installation CD also allows us to create **dual boot systems**, so that we can actually have more than one operating system available on our computers for us to use.

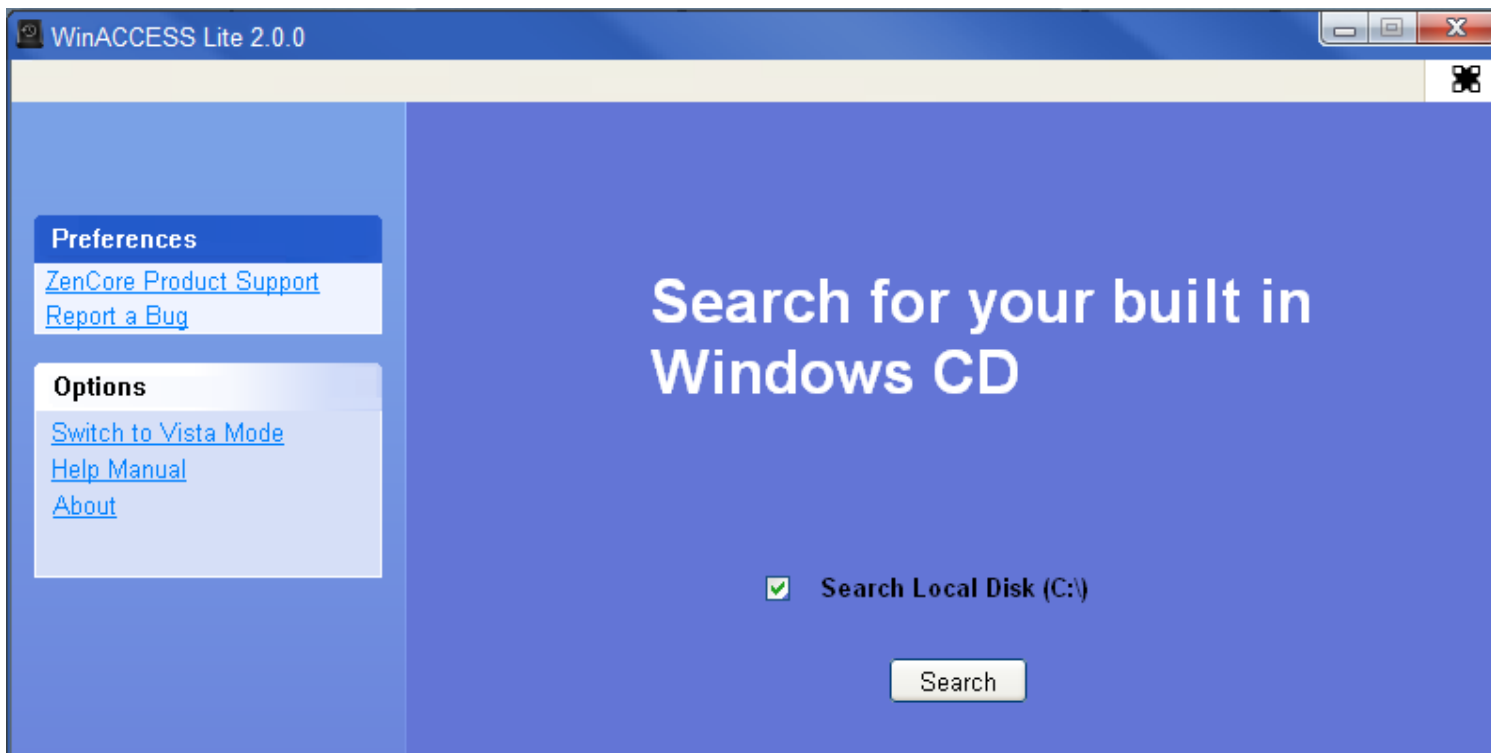
The solution to this problem is simple, and has already been found by our manufacturers (the sensible ones, that is). Instead of wasting money by stocking up on Windows CD's to pass on to their customers, manufacturers will burn an exact copy of a Windows CD to our computers' hardisk, so that we can easily access, upgrade and install our systems!

Now, with WinACCESS Lite (2), you can search for the built in CD and execute it straight off your machine in seconds!



XP Mode

Launch WinACCESS Lite (2). Select Windows XP. If this is not your operating system, please switch to **Vista Mode** or select Windows Vista on startup. You should be greeted by a screen similar to the one below.

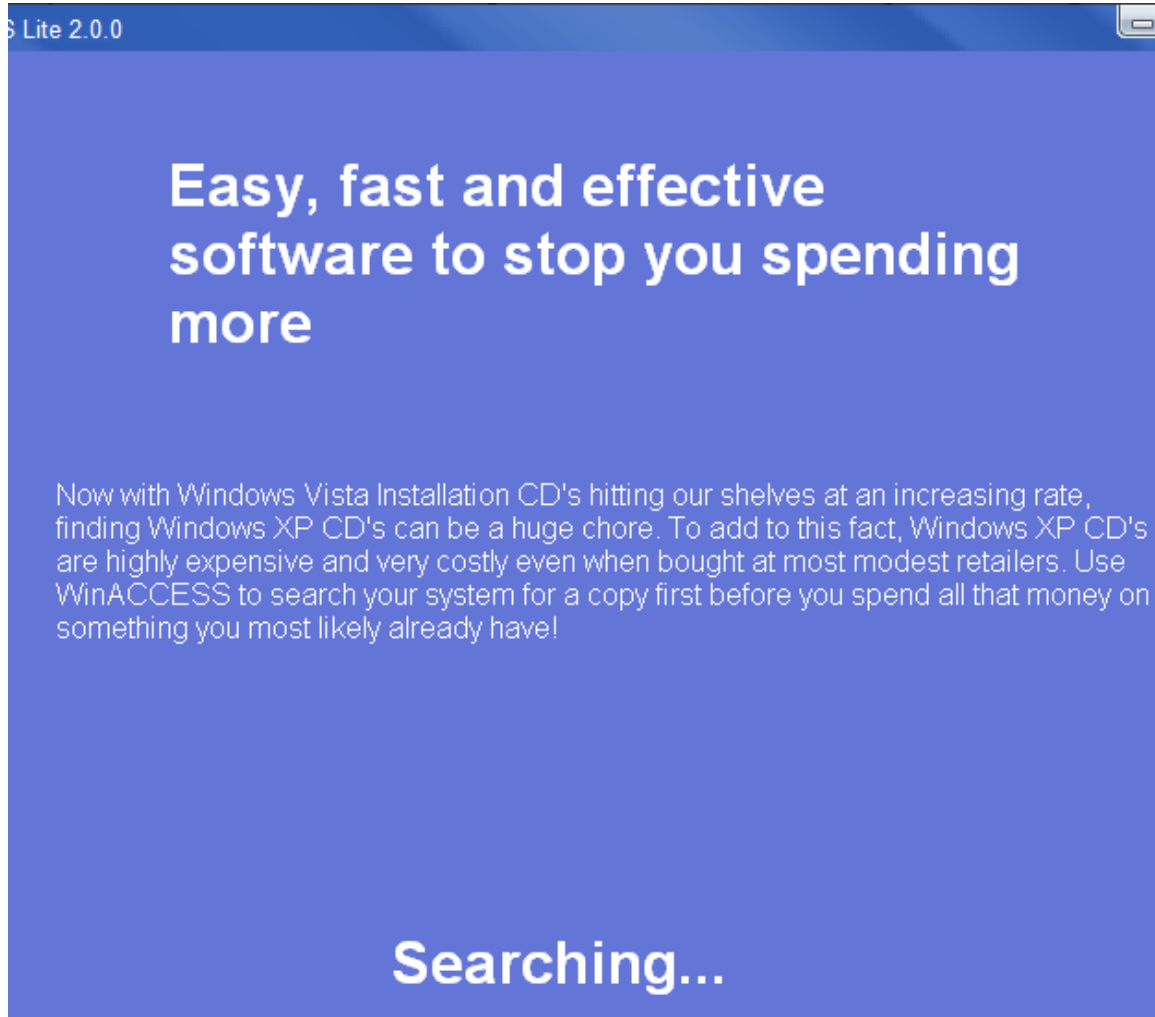


If you wish to receive online support from our customer services, select **ZenCore Product Support**. If you wish to report a problem that you may have encountered during operation, select **Report a Bug**.

If you wish to switch to Vista Mode to search for the copy of the CD on a Windows Vista system, select **Switch to Vista Mode**. In order to access this help manual for future referencing, select **Help Manual**. To receive software information, click **About**.

The checked box featured with the label "Search Local Disk (C:)" cannot be deselected. This is here to signify that WinACCESS can only search the default drive C:\. This is where the CD will be stored. If your default system drive is not Local Disk drive C:\, then please discontinue using this application.

Press "Search" to begin the search for your built-in CD.



Please be patient while the application searches for your copy of the CD.

After a minute or so, WinACCESS will notify you whether the built in CD is present or not. If it is, WinACCESS will launch the CD application for you automatically. If not, WinACCESS Lite will notify you.

**Could not find built in copy of the
Windows Operating system CD.
Folder i386 missing!**

A copy of the Windows CD could not be found

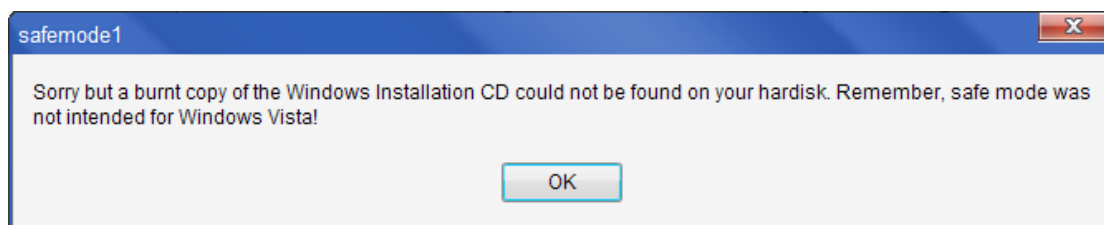


Using Safemode (for XP mode only)

If you already have a dual boot system, or have had one already, it is likely that your computers hardisk directories have been changed a little. Also, if you encounter problems using WinACCESS, you can also stop encountering these problems by switching to safemode. Safemode powers down on graphical elements and cuts CPU Usage to make it more effective and less likely to encounter problems when in operation.

If you have had, or do have a dual boot system, press **F4** to access safemode. If you are encountering problems using WALite, access safemode also.

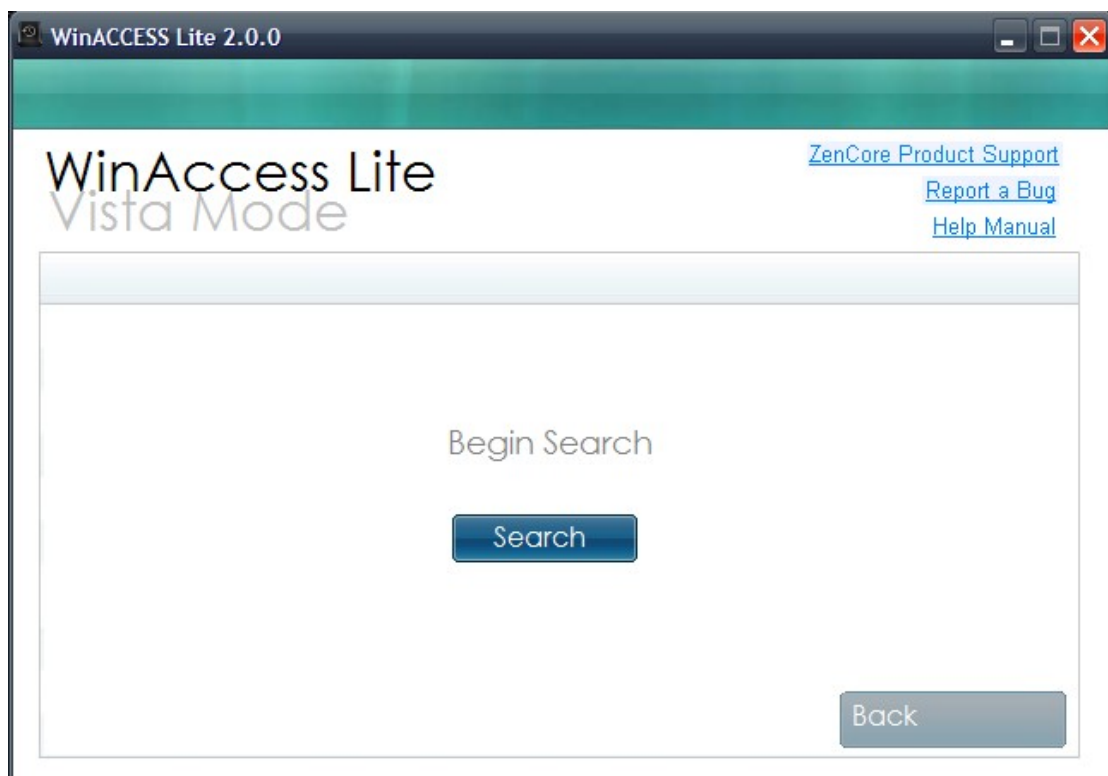
Unfortunately, safemode is not available for Vista users.





Vista Mode

Launch WinACCESS Lite (2). Select Windows Vista. If this is not your operating system, please press “Back” on the main Vista Mode window and select an alternative mode to suit your operating system. You should be greeted by a screen similar to the one below.



If you wish to receive online support from our customer services, select **ZenCore Product Support**. If you wish to report a problem that you may have encountered during operation, select **Report a Bug**.

If you wish to switch to XP Mode to search for the copy of the CD on a Windows XP system, select the “**Back**” button and switch to an appropriate mode. In order to access this help manual for future referencing, select **Help Manual**. To receive software information, click **About**.

WinACCESS can only search the default drive C:\. This is where the CD will be stored. If your default system drive is not Local Disk drive C:\, then please discontinue using this application.

Press “Search” to begin the search for your built-in CD.



If the operation is successful, WinACCESS Lite will automatically execute your Windows Vista setup immediately. If not, you will be presented with an error message, signifying that a copy of the Vista CD setup could not be found.

