

SASE SHAM, INC.

Wireless AutoSwitch XPV Installation Guide

Wireless AutoSwitch XPV Installation Guide

© Sase Sham, Inc.
7 Greenridge Ave • Suite 5B
Phone 718.930.1990 • Email sase@saseshaminc.com

Table of Contents

INTRODUCTION	1
BASIC INSTALLATION	1
BASIC USAGE	7
DIFFERENT MODES OF OPERATION.....	8
WINDOWS XP MODES.....	8
WINDOWS VISTA AND WINDOWS 7 MODES	9
CHANGING MODES AND LICENSE KEY MANUALLY	9
ADVANCED INSTALLATION.....	10
WHAT IT DOES	10
EXCLUDE NETWORK ADAPTERS.....	11
KNOWN ISSUES	11
OTHER VERSIONS	11
SUPPORT	11

Introduction

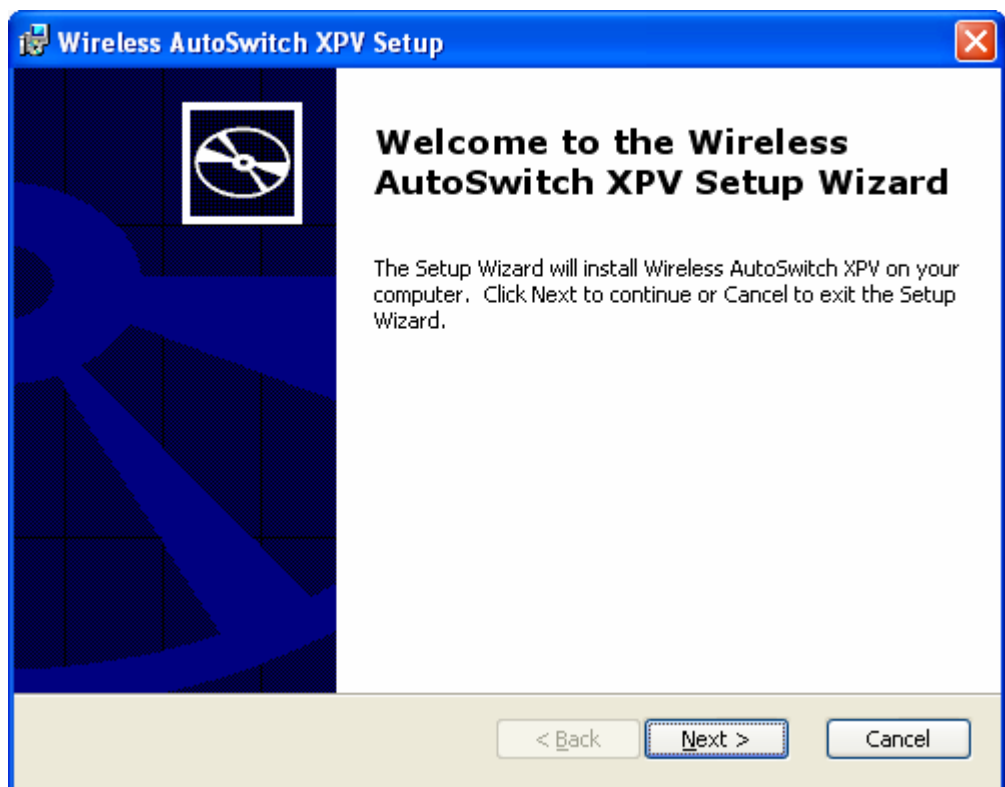
This manual will guide you through the installation and use of Wireless AutoSwitch XPV. Whether using it for personal use or corporate deployment you will find all necessary installation information below.

Wireless AutoSwitch XPV works on all versions of Windows from Windows XP up. It runs as a service and will automatically disable your wireless card when you connect to a LAN (hard wire) connection, and re-enable the wireless card when there is no LAN connection. This ensures that you are always using the fastest connection for network traffic. In the office this helps reduce redundant network connections, while still helping your employees seamlessly transfer from wired to wireless network connections.

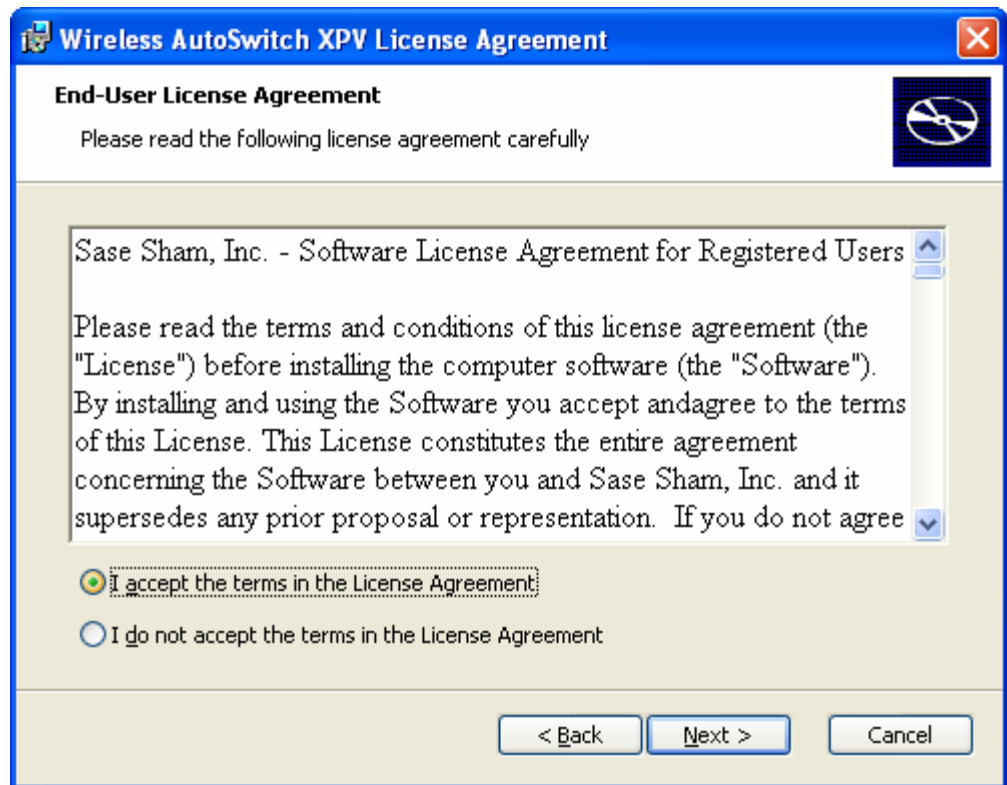
For offices that are wireless security conscious this application makes sure the laptop's wireless card is off when the user is wired into your network.

Basic Installation

For a basic installation all you need to do is run the downloaded msi and you will see the following dialog. Click **Next**.

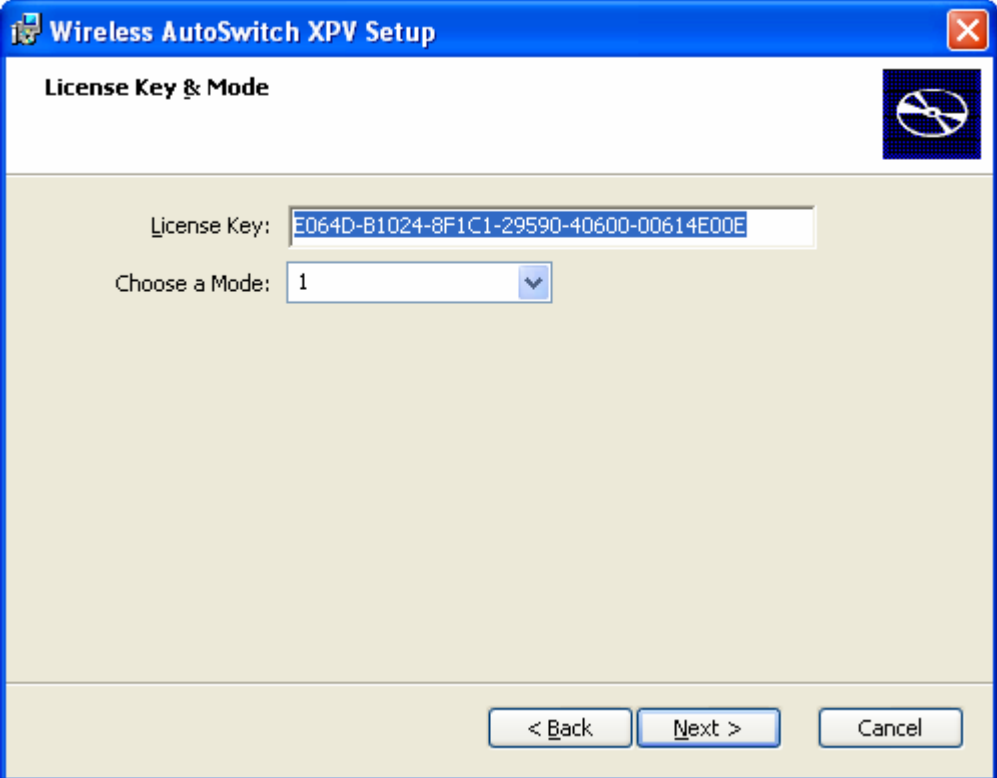


Now you will see the License Agreement dialog. Read the license agreement and select “I accept the terms in the License Agreement” and click **Next**.



WIRELESS AUTOSWITCH XPV INSTALLATION

Now you will see the License and Mode Information dialog. The dialog will be pre populated with a default license key that will give you a 30 day trial of the application. If you have a permanent license key enter it. Choose the mode of operation desired. See “Different Modes of Operation” section below for information on the different modes. Click **Next**.



The image shows a Windows-style dialog box titled "Wireless AutoSwitch XPV Setup". The dialog has a blue title bar with a standard Windows icon on the left and a close button (X) on the right. Below the title bar, the text "License Key & Mode" is displayed in a bold font. To the right of this text is a small icon of a wireless signal with a slash through it. The main area of the dialog is light beige. It contains two input fields: "License Key:" followed by a text box containing the default key "E064D-B1024-8F1C1-29590-40600-00614E00E", and "Choose a Mode:" followed by a dropdown menu currently showing "1". At the bottom right of the dialog are three buttons: "< Back", "Next >", and "Cancel".

Wireless AutoSwitch XPV Setup

License Key & Mode

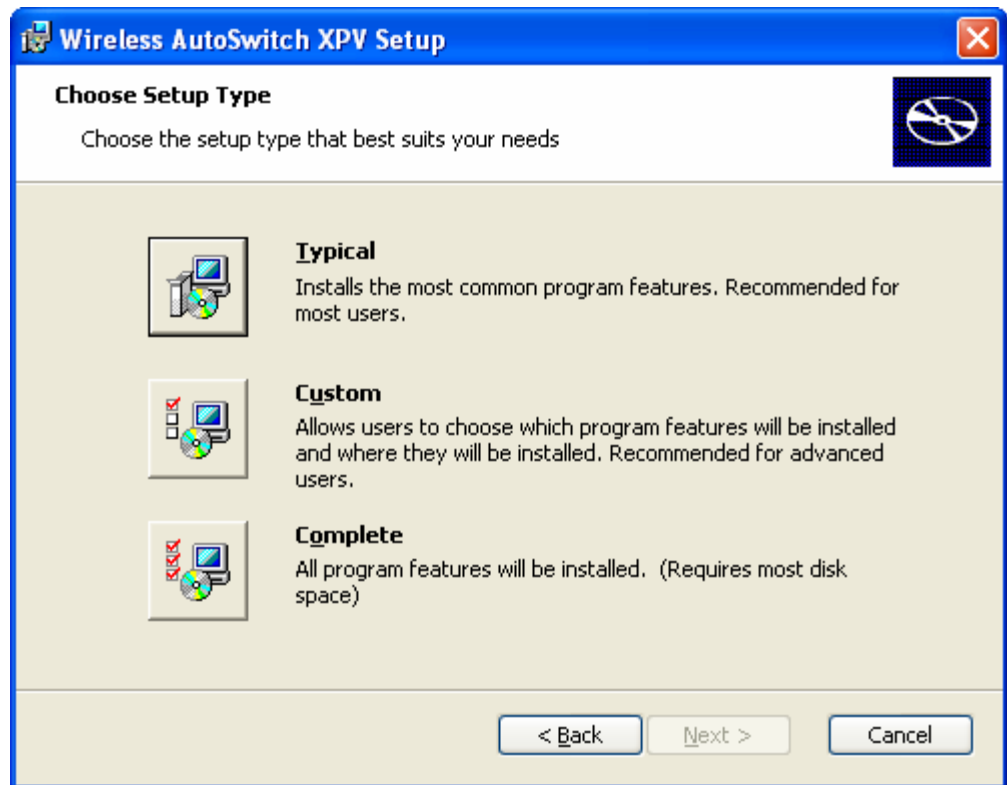
License Key: E064D-B1024-8F1C1-29590-40600-00614E00E

Choose a Mode: 1

< Back Next > Cancel

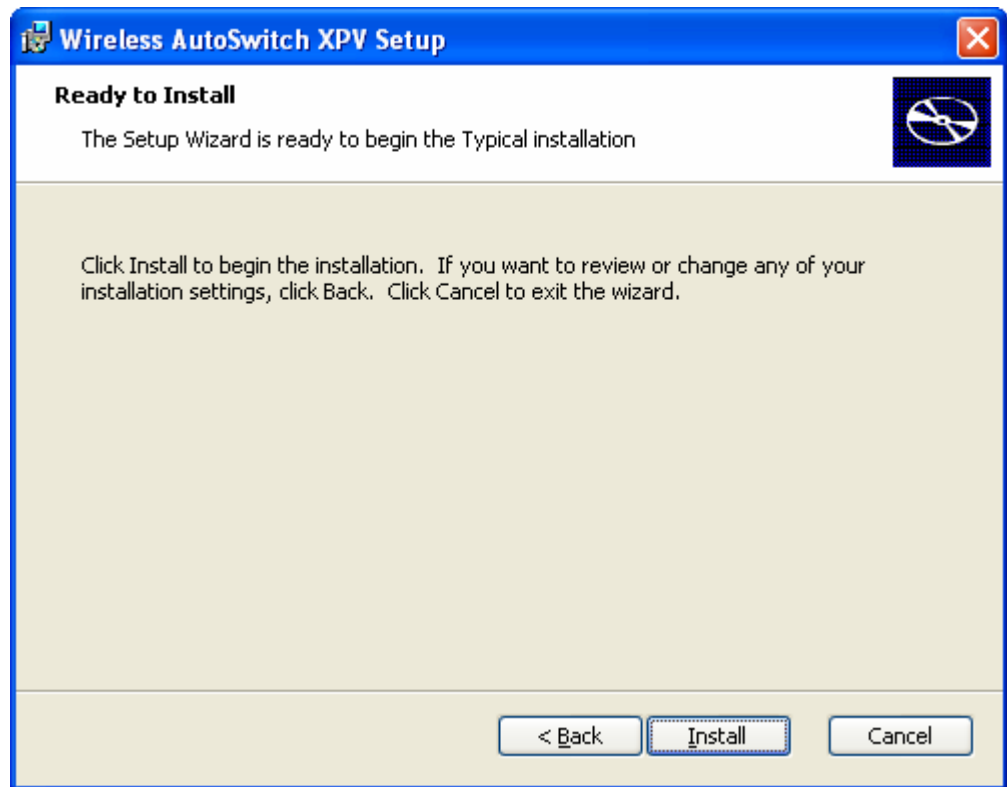
WIRELESS AUTOSWITCH XPV INSTALLATION

You can now choose the setup type. Choose “Custom” if you wish to change the default installation path. Click **Next**.



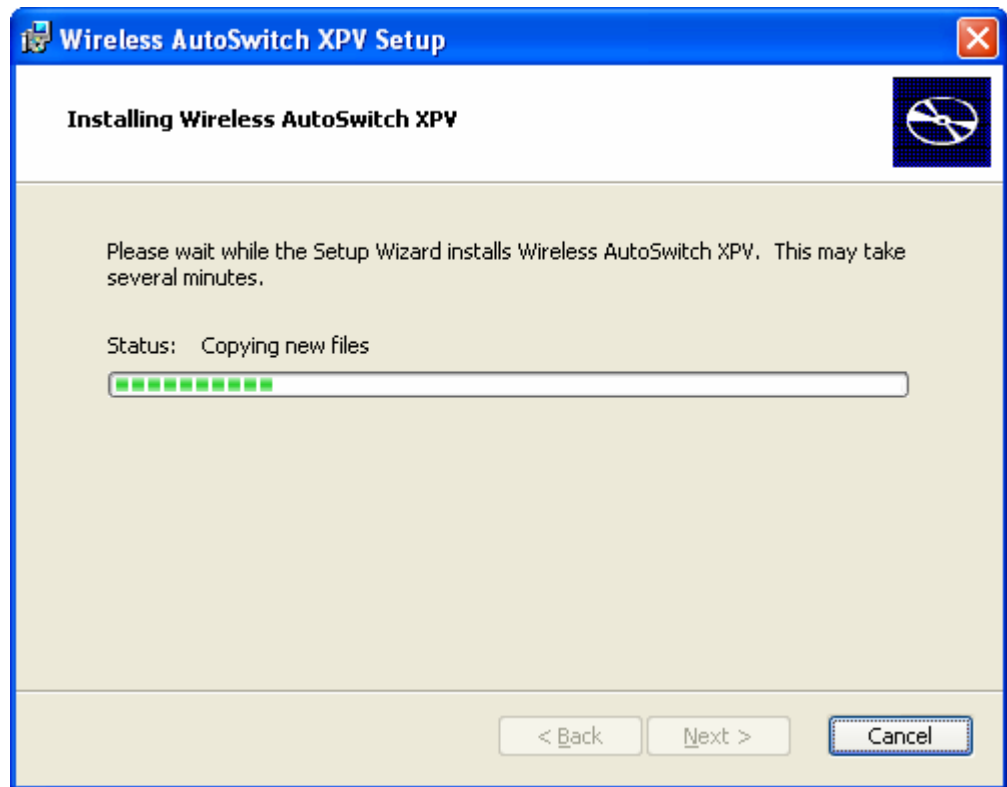
WIRELESS AUTOSWITCH XPV INSTALLATION

Now the application is ready to be installed. Click “Install”.

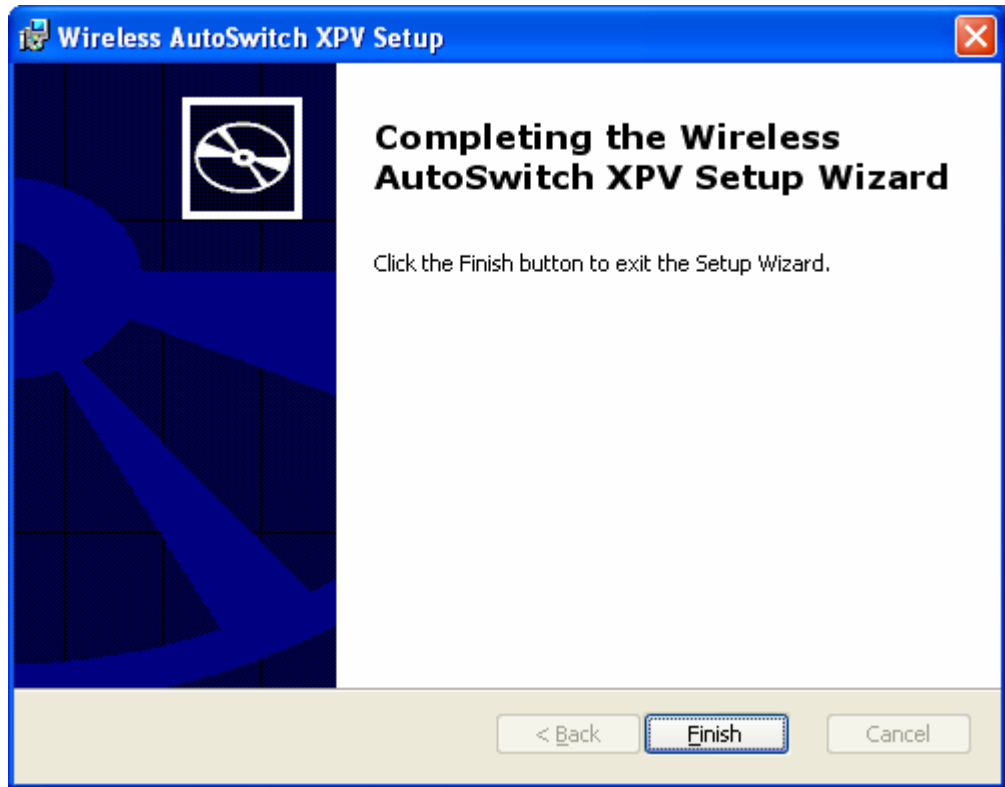


WIRELESS AUTOSWITCH XPV INSTALLATION

Wireless AutoSwitch XPV will now install.



Now you will see the Installation Complete dialog. Click **Finish**.



That is all you need to do for a basic installation. The application is installed and started immediately.

Basic Usage

Once Wireless AutoSwitch is installed it will work automatically without any need for user interaction. Test it for yourself:

Action to Perform	Result You will Observe
Disconnect your wired connection	The wireless card will be enabled
Reconnect your wired connection	The wireless card is disabled

Different Modes of Operation

There are two or four modes of operation depending on which operating system Wireless AutoSwitch is installed on. Select the one that fits you needs.

Windows XP Modes

For Windows XP Wireless AutoSwitch has 4 different modes. Each mode does something a little different. The default installation mode is Mode 1.

Mode 1:

- Starts when windows starts, however it waits for the user's desktop (Program Manager) to be loaded before it actually enable or disable the wireless card.
- Installs a shortcut called "Wireless AutoSwitch On-Off" so the user can manually turn it off and on.
- User can manually enable the wireless card and Wireless AutoSwitch will not automatically turn it off.

Mode 2:

- Starts when windows starts, however it waits for the user's desktop (Program Manager) to be loaded before it actually enable or disable the wireless card.
- No shortcut created.
- If the user manually enables the wireless card Wireless AutoSwitch will automatically turn it off.

Mode 3:

- Starts when windows starts, does not wait for the user's desktop (Program Manager). ***May slow down Windows Start Up time.
- Installs a shortcut called "Wireless AutoSwitch On-Off" so the user can manually turn it off an on.
- User can manually enable the wireless card and Wireless AutoSwitch will not automatically turn it off.

Mode 4:

- Starts when windows starts, does not wait for the user's desktop (Program Manager). ***May slow down Windows Start Up time.
- No shortcut created
- If the user manually enables the wireless card Wireless AutoSwitch will automatically turn it off.

Windows Vista and Windows 7 Modes

Mode 1:

- Starts when windows starts, does not wait for the user's desktop.
- User can manually enable the wireless card and Wireless AutoSwitch will not automatically turn it off.

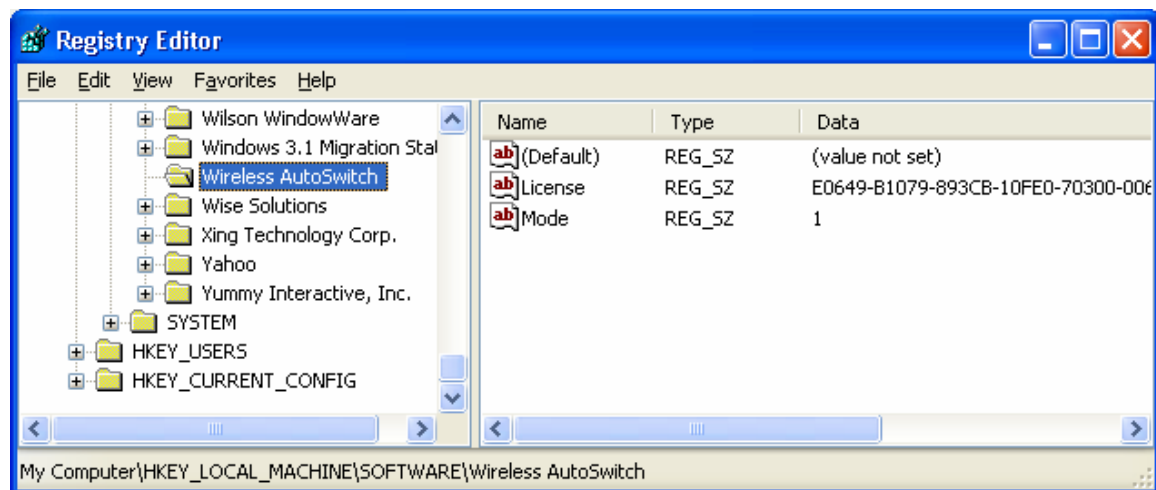
Mode 2:

- Starts when windows starts, does not wait for the user's desktop.
- If the user manually enables the wireless card Wireless AutoSwitch will automatically turn it off.

Changing Modes and License Key Manually

The mode can only be changed through the registry. Open regedit and navigate to HKEY_LOCAL_MACHINE\SOFTWARE\Wireless AutoSwitch, double click on Mode and enter 1-4.

You can also change the license key here by double clicking on “License Key” and entering the different license key.



Advanced Installation

For deployment of Wireless AutoSwitch across multiple machines you have a few options.

1. You could do a silent MSI Installation through a batch file, login script, SMS or any other deployment tool using a command similar to:

```
msiexec /i "Wireless AutoSwitch XPV.msi" MODE=1 LICENSEKEY=1111-1111-1111-1111 /q
```

You would specify the filename, mode and license key in the command line.

2. You could create a transform file (MST) that would silently deploy Wireless AutoSwitch with the mode and license key. You can use this option for deployment through group policy.
3. If needed Sase Sham, Inc. could provide you a single MSI file that has no dialogs and is hard coded with the mode and your permanent license key.

What it Does

Wireless AutoSwitch is installed and runs as a service that is set to automatically start. If the user stops the Wireless AutoSwitch program, it will restart automatically on reboot.

The first thing it does is identify the wireless card and then finds out if it is enabled or disabled. Then it checks if there is a hard-wire connection active. If there is an active wired connection the wireless card is disabled if it isn't already disabled.

At this point Wireless AutoSwitch is in a loop looking at the wired connection every 3 seconds.

Because the program is in a loop only looking at the wired connection you can manually enable the wireless card and it will not get automatically disabled by Wireless AutoSwitch (Only in Mode 1 and 3). This is useful if you temporarily want both wired and wireless enabled.

The moment the wired connect is disconnected, the wireless card is enabled and Windows takes over and makes a wireless connection if one is available and setup for automatic connection.

Wireless AutoSwitch will only enable or disable the wireless network card depending on the situation and nothing else. It does not establish the wired or wireless connections, Windows does that.

Exclude Network Adapters

If you wish to exclude a network card from being monitored by Wireless AutoSwitch XPV, create a file called “exclude.txt” in the installation directory (the default is C:\Program Files\Wireless AutoSwitch). Enter the name of the adapter to be ignored. You may enter as many adapters as you like, one per line in the text file. This comes in handy if you have a virtual adapter that interferes with the normal operation of Wireless AutoSwitch XPV.

Known Issues

If you have more than one wireless card it may lock onto the wrong one.

You have to use Windows’ wireless zero configuration to manage the card. If for instance you have a Linksys wireless card and are using the Linksys utility to manage wireless connections the card may not get disabled by Wireless AutoSwitch.

If there is a WMI issue on the machine where WMI cannot communicate with the network card Wireless AutoSwitch will not work. Wireless AutoSwitch uses WMI to identify which network card is the wireless one, if it can't identify a wireless card it quits.

Other Versions

There are two other versions of Wireless AutoSwitch:

1. Wireless AutoSwitch Vista - Works only on Windows Vista
2. Wireless AutoSwitch 10 - Works only on Windows XP

Support

Support is available through phone and/or email. Please don’t hesitate to contact us with any questions or issues.

Phone: 718-930-1990

Email: sase@saseshaminc.com