



Xavor SharePoint 2010 Migrator

Installation Guide

Overview

This guide explains the installation process for Xavor's latest release of the SharePoint Migration tool. Xavor SharePoint 2010 Migrator (XSPM) is a one-stop solution for migrating content and permissions from WSS 3.0 or MOSS 2007 to MOSS 2007 or SharePoint 2010 seamlessly.

XSPM comprises of two modules, XSPM Client and XSPM Extensions. Both modules must be installed in order to perform the migration operation.

XSPM Client is the Graphical User Interface (GUI) with which user interacts. It can be installed on the destination or source SharePoint Web Front End (WFE) or even on a separate machine within the corporate local area network. Users can interact with XSPM Client GUI through drag-n-drop method to select the data (sites or lists) to be migrated. On the backend, XSPM Client sends a command to XSPM Extensions to execute those received commands. Since XSPM Client acts as controller software, hence it must be installed with other module i.e. XSPM Extensions to perform the migration.

XSPM Extensions are the back-end services with which XSPM Client interacts and gets the migration operation executed. XSPM Extensions are installed on the SharePoint all Front Ends Web Servers.

System Requirements

Computer and Processors	Processor speed of 1.4 GHZ or higher, dual processor 3 GHz <i>recommended</i>
Memory	1 GB of RAM, 2 GB <i>recommended</i>
Hard disk	Requires 10MB for installation of XSPM Client and Services, however to perform the migration operation, hard disk should have available space according to content size.
Operating System	Requires one of the following: Microsoft Windows XP, Microsoft Server 2003, Windows Vista, Windows 7, Windows 2008 or Windows 2008 R2.
Framework	Dot Net framework version 3.5 SP1 or higher
SQL Server	SQL server 2005 (x86 and x64), SQL Server 2008 (x86 and x64)

Installation Steps

XSPM Client Installation

Installation Prerequisites:

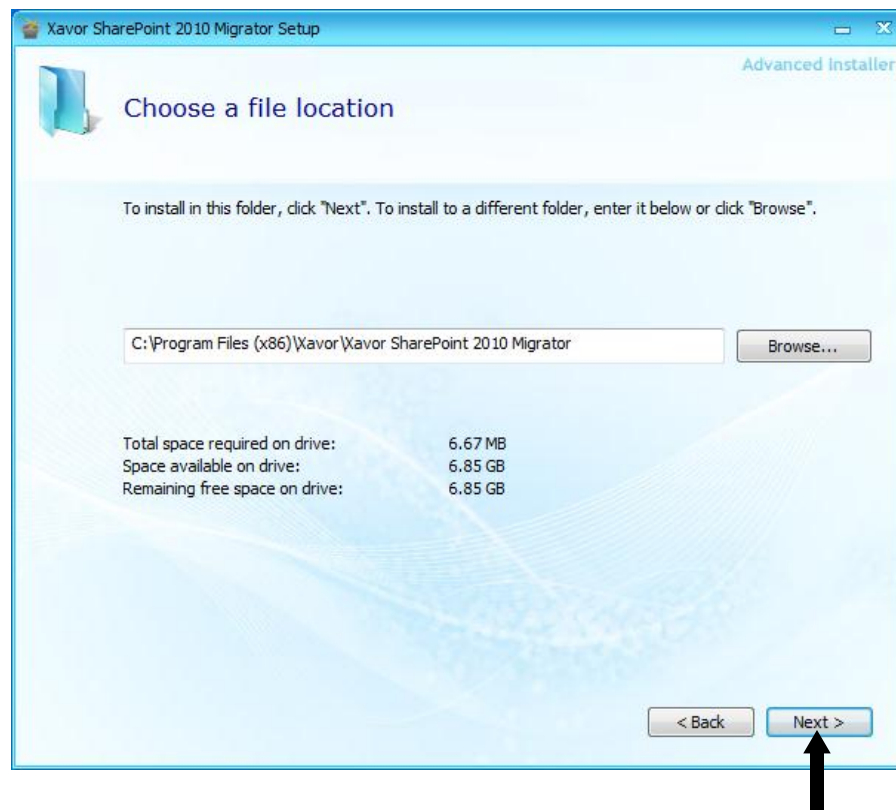
- Account must have local administrator rights.
 - Dot Net framework version 3.5 SP1 or higher installed.
 - The machine can be any machine that has access to source and destination servers.
1. On the machine where you wish to install the XSPM Client, open the XSPM Client folder and double click on the file titled “setup.exe” to commence with the installation.
 2. XSPM installation wizard will launch. To advance, click “Next” on the bottom right of the window.



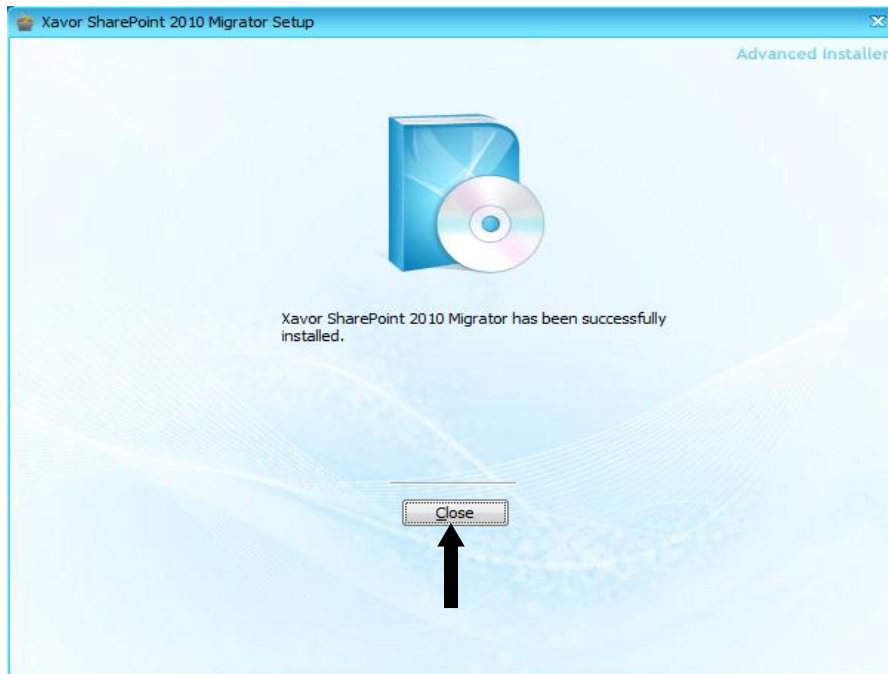
3. To advance through the installation wizard, click “Next” on the bottom of each screen. Review the terms of end-user license agreement and if you want to continue, then click on the check button to select “I accept the terms of this agreement” then Click “Next”.



4. Enter the desired location to install XSPM Client, after selecting a location click “Next” to proceed.



5. Installation is now complete. Select “Close” to exit the XSPM Client installation wizard.



XSPM Extensions Installation

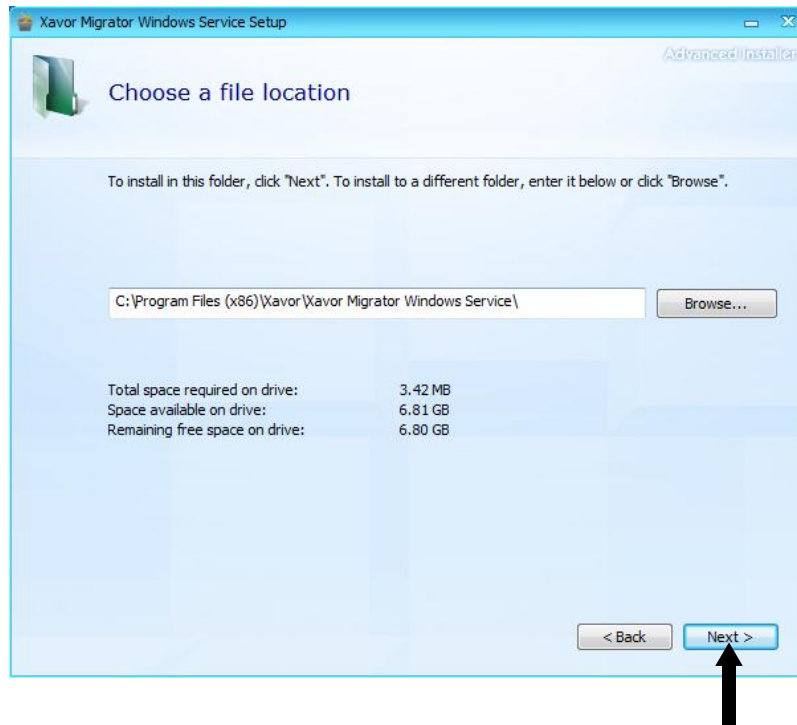
Installation Prerequisites:

- Account must have local administrator rights.
- .Net framework version 3.5 SP1 or higher installed.
- WSS 3.0 or MOSS 2007 or SharePoint 2010 must be installed before installing XSPM extensions

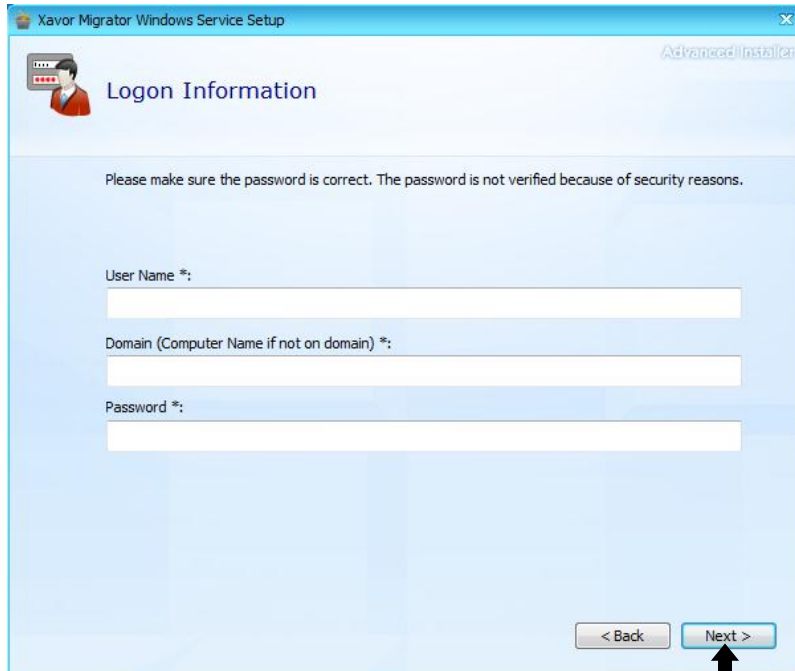
1. To install XSPM Extensions which are also called XSPM services, kindly double click on the setup file of XSPM extensions, you will see the following window.



2. Enter the desired location to install XSPM Extensions, after selecting a location click “Next” to proceed.



3. Provide username, domain and password and press the 'Next' button. A window will then be opened which shows the list of site collections associated with the permissions provided.



Xavor Migrator Windows Service Setup

Advanced Installer

Login Information

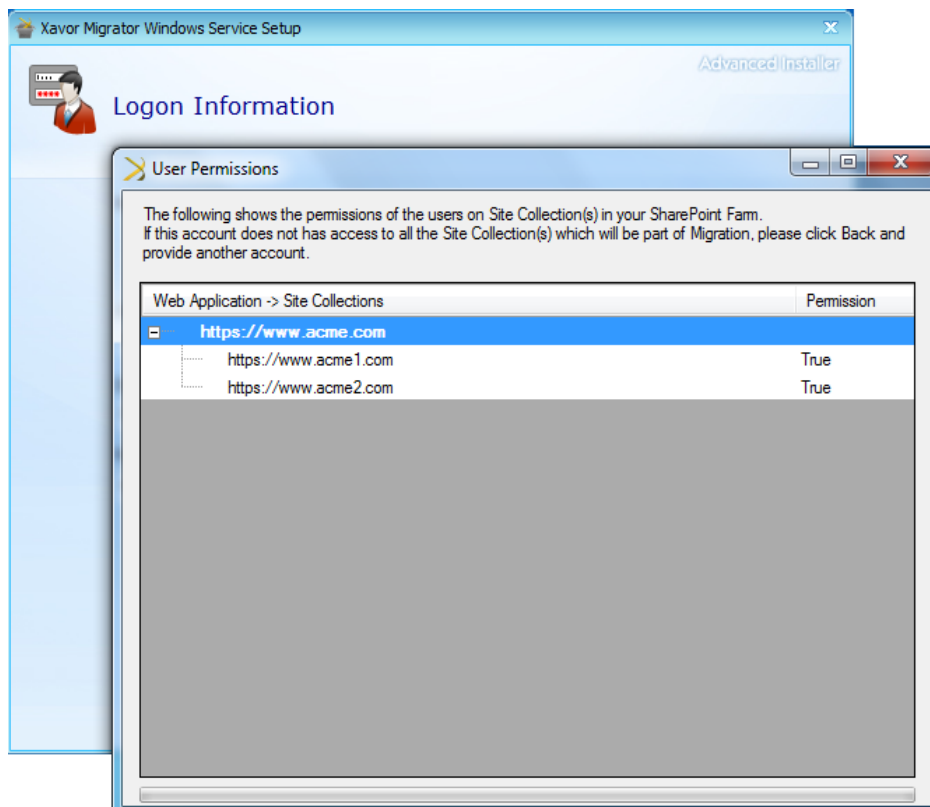
Please make sure the password is correct. The password is not verified because of security reasons.

User Name *:

Domain (Computer Name if not on domain) *:

Password *:

< Back Next >



Xavor Migrator Windows Service Setup

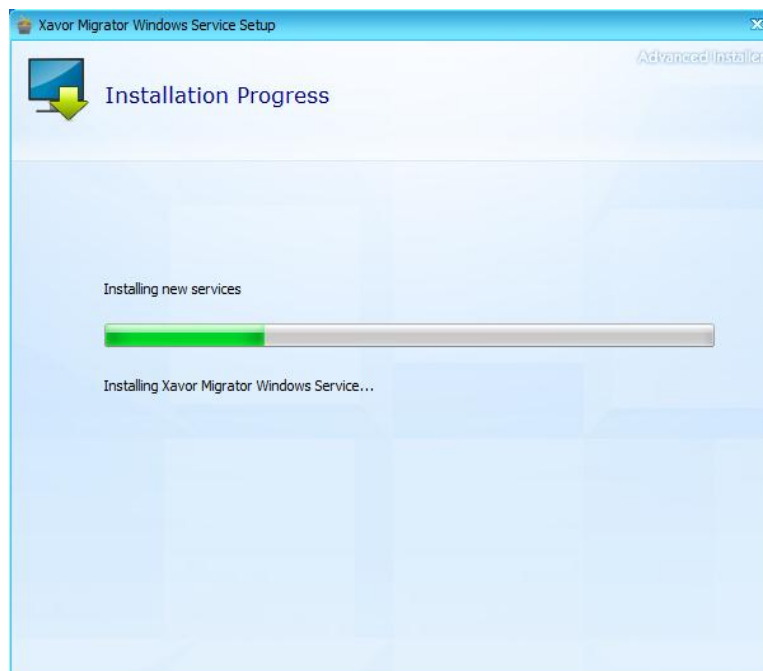
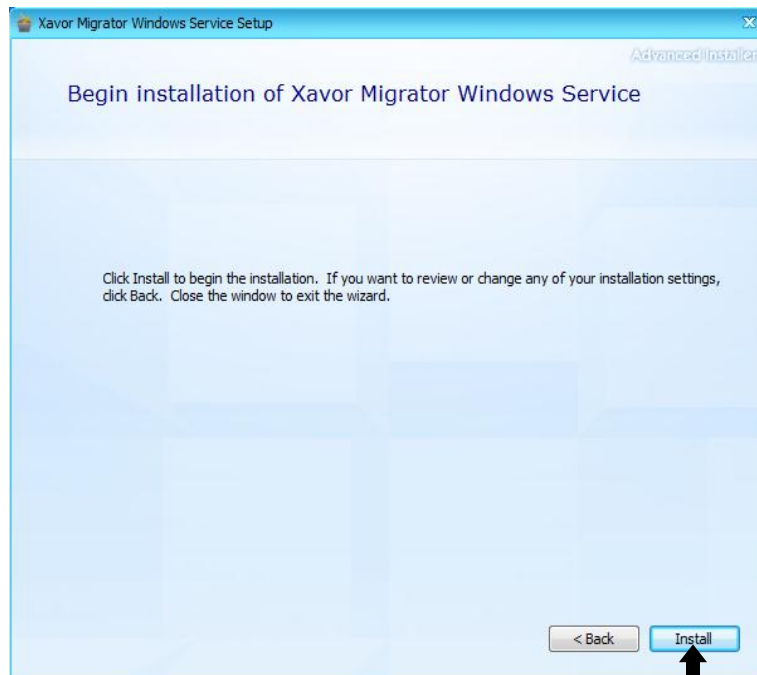
Advanced Installer

User Permissions

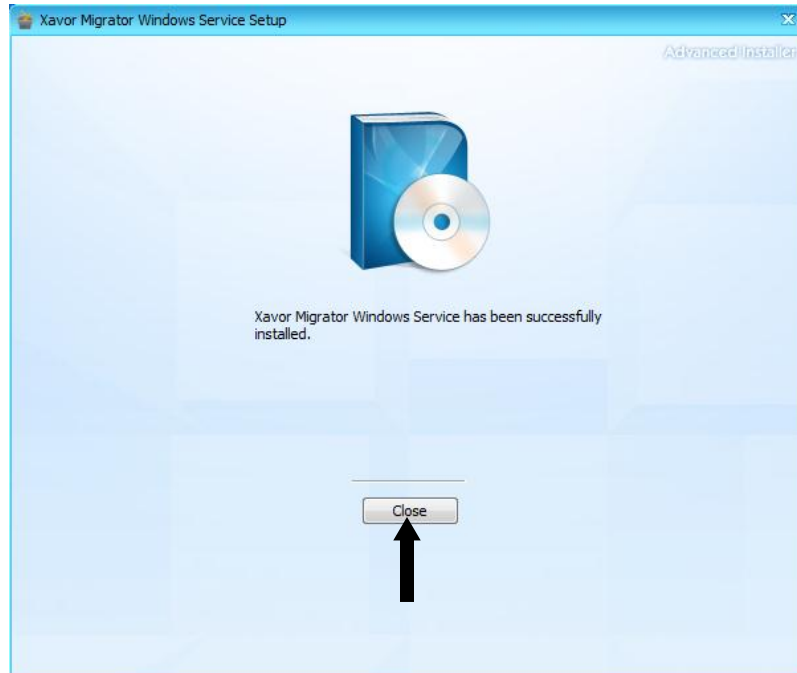
The following shows the permissions of the users on Site Collection(s) in your SharePoint Farm.
If this account does not has access to all the Site Collection(s) which will be part of Migration, please click Back and provide another account.

Web Application -> Site Collections	Permission
https://www.acme.com	
https://www.acme1.com	True
https://www.acme2.com	True

4. If the account has due permission on all the required site collections and has access rights to install the solution and features into SharePoint, then you can close the dialog box and click the “Install” button; otherwise click ‘Back’ button and provide another account that has an appropriate access. Installation process will begin once you click the ‘Install’ button.



5. Once the extensions are installed, click “Close” to complete installation.

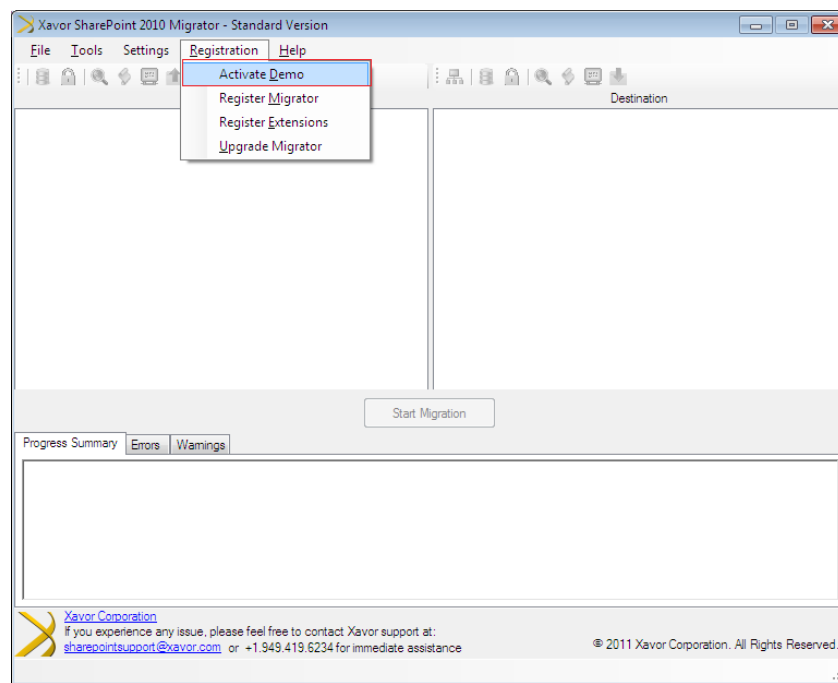


Product Activation

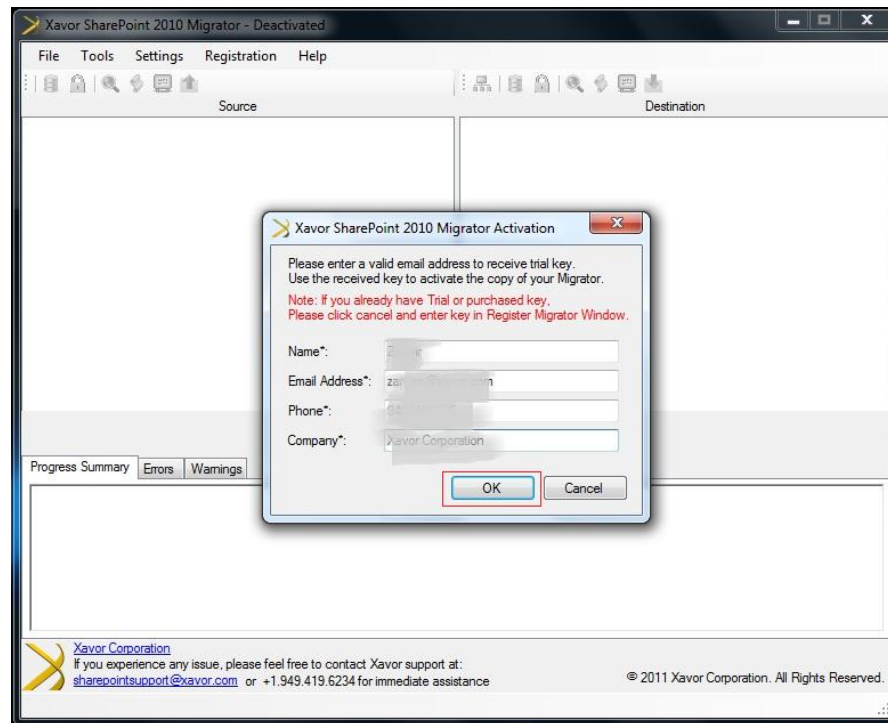
By default, Xavor SharePoint 2010 Migrator stays inactive after installation. You will need an activation key to activate the product. Please follow these steps to successfully activate the product. Before you start, please ensure the following:

- XSPM Extensions are running on respective servers under respective SharePoint Timer Service Accounts
- The Account used to run extensions on both machines are added to Local Admins.
- Firewall is disabled or communications on port 18989 is enabled on the network.

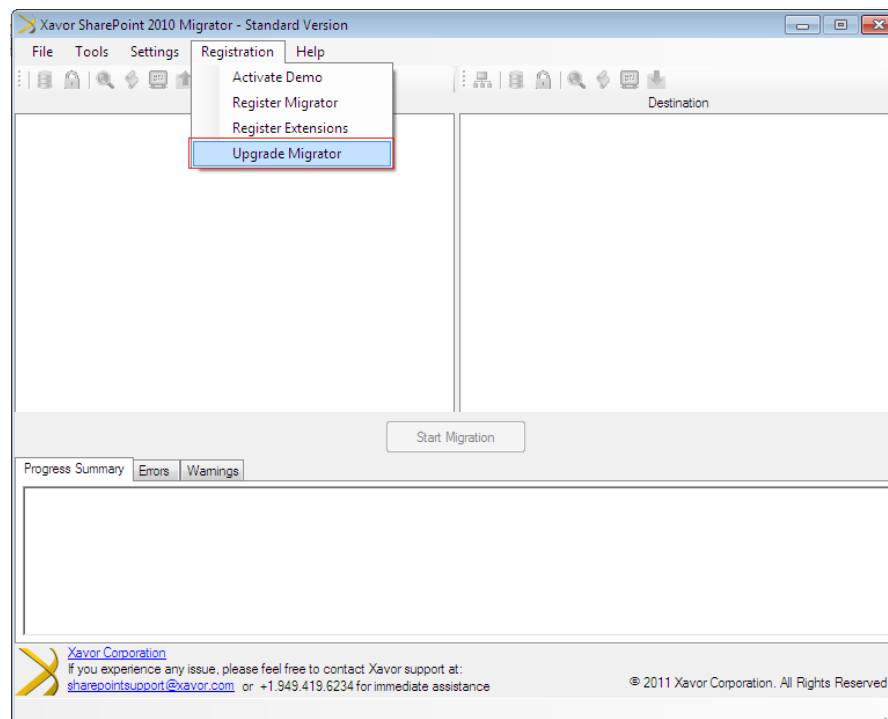
1. Click on Registration> Activate Demo



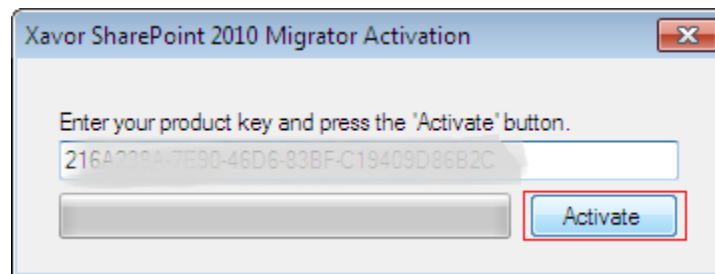
2. Please fill the details in the form and hit “OK”. You will receive an activation key within a few minutes at the email address that you specified.



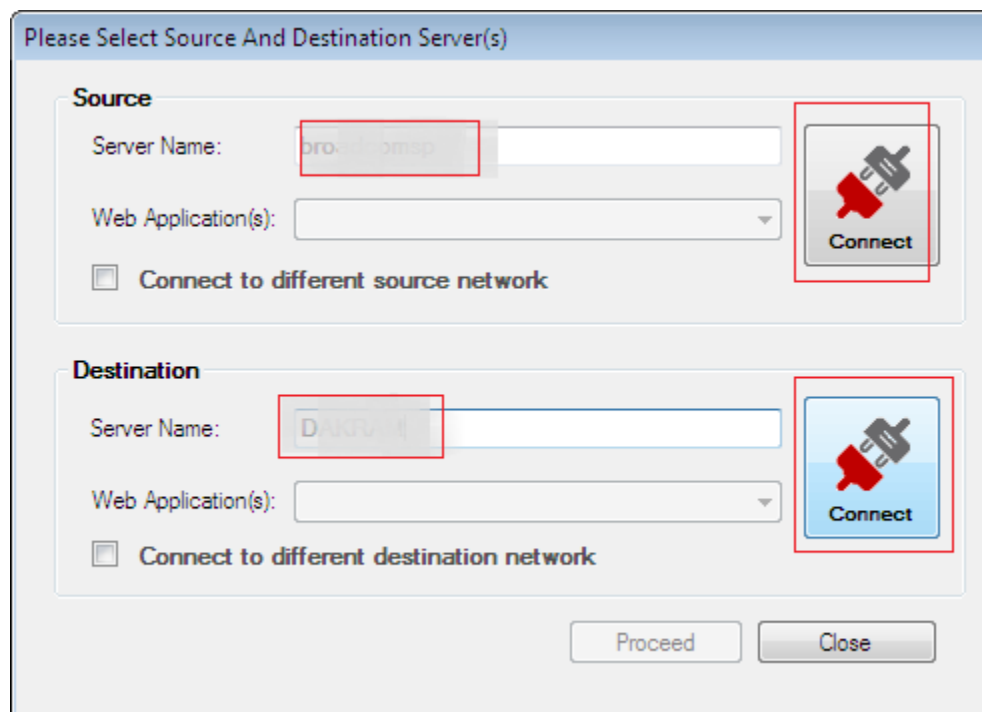
3. Please click Registrations > Register Migrator.



4. Enter the Supplied Key and Press “Activate”



5. Restart Migrator and connect to your servers. The evaluation version of Xavor SharePoint 2010 Migrator can connect to two servers where you have installed extensions. Once you connect to these servers, they will automatically be registered with this migrator.



6. You can check the registered servers later from Registrations> Register Extensions

Core Functionality & Features

- **Data Migration:** Complete port of data with 0% content loss no matter what size the database is.
- **Permissions Migration:** Migrate user permissions and associated metadata.
- **Connect to Multiple Sites:** Connect to multiple SharePoint sites, across any number of servers for easy distribution and consolidation of your SharePoint data.
- **Work Remotely:** With the help of SOA based architecture, this tool can connect to any site even outside your extranet and help in migrating content between disparate SharePoint machines.
- **Easy to Use:** Similar to the windows file explorer, tree-based, copy-and-paste-style user interface.
- **Migrate all list types:** Document Libraries, Issues, Tasks, Contacts, Announcements, Discussions and Custom Lists can all be migrated while preserving views, metadata, and user-edit information.
- **Migrate sub-sites:** Sub sites based can all be migrated along with users and important metadata.
- **Migrate Site Collections:** Site Collections can be migrated using this tool provided that the source and destination sites are based on the same site template i.e. for a SharePoint Team Site source site collection the same destination site collection template of team site must be used during site collection creation. You can use the Xavor SharePoint 2010 Migrator to migrate sites between MOSS and SharePoint 2010 as well. To preserve the new design architecture of SharePoint 2010 the sites migrated will be switched to the v4 master page of SharePoint 2010.

To know more about additional features such as Scheduling Migrations, Backup & Restore, Import or Export, Governance, Notifications, and Managing Sites, etc. please visit www.xavor.com/sharepoint

If you require pre-sales technical assistance or wish to arrange a demo or know details about licensing, please feel free to contact us at sharepoint@xavor.com or call +1 949 419 6466.