

# Installing Zebra 2.5 on Windows

Installing Zebra 2.5 on Windows is straight forward. Just doubleclick the Zebra25Winstaller.exe and follow the steps. It is however highly recommended to read this guide first.

The installer will create two different things on your harddrive:

**Zebra2.dll, Zebralette.dll, Zebrify.dll, ZRev.dll** – the actual VST plugins

**Zebra2.data** – a directory containing resources and preset files

The data directory will commonly be installed into the same location as the VST plugin. You can however move it anywhere you want, even on a different hard drive. When you do so, all you need to do is create a Windows Shortcut (also called a link, with the hidden suffix .lnk) and put that back into the same directory as Zebra2.dll. Make sure to rename that shortcut back to Zebra2.data. Fortunately the installer already provides for this functionality, so you can browse to any preferred location for presets and data files.

Whenever you load Zebra2 into your VST host application, Zebra2 will first check if it finds Zebra2.data in the same directory as the .dll. If so, it'll use the information found there. If Zebra2.data isn't there, it'll try to resolve the link. If that fails too, Zebra2 will still work, but it will neither present you with a user interface nor will it access any presets or registration files. In that case it's best to run the installer again.

## Updating Zebra from version 2.0 – 2.3

Updating is basically the same as a new installation. You typically install over your existing installation. However, even though the installer is mostly harmless, it's a good habit to back up any previous installations of Zebra2, especially your preset library and your support files.

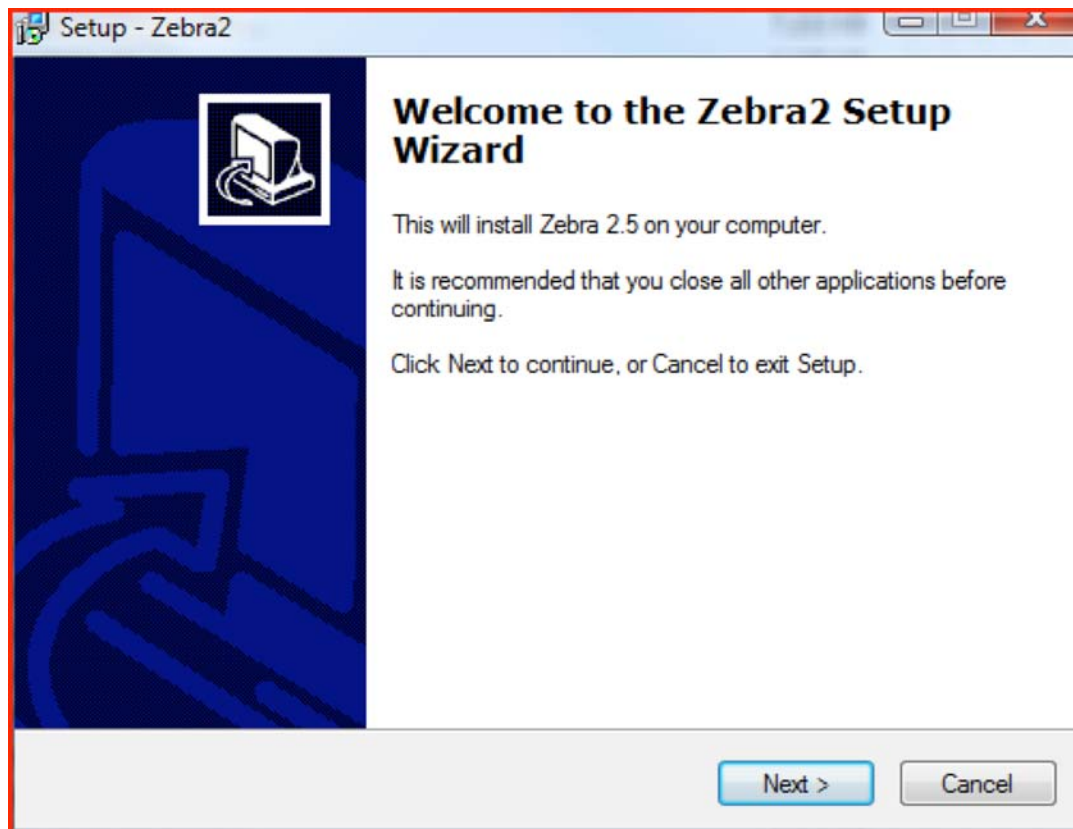
**IMPORTANT:** Previous version of Zebra have commonly had their support files stored in

C:\Program Files\u-he\

This has caused a lot of trouble because this directory might have had restricted access ever since Windows Vista came out. This is why the installer introduces a new step that lets you migrate your old data to the new Zebra2.data directory. This is covered in more detail on the following pages.

## Starting Zebra25Winstaller.exe

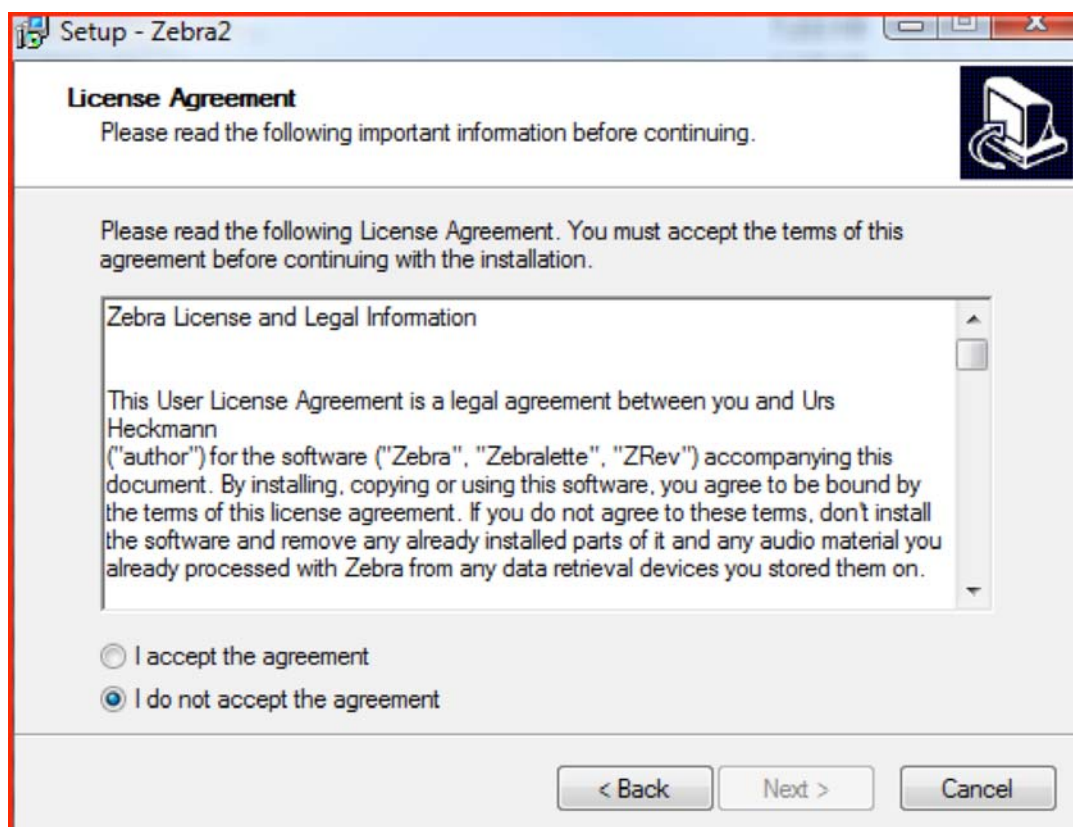
The first page of the installer tells you about the version number. Click Next.



## Accepting the License Agreement

On the second page you're presented with the end user license agreement. You must accept it in order to install & use Zebra. It doesn't hurt to read it before doing so.

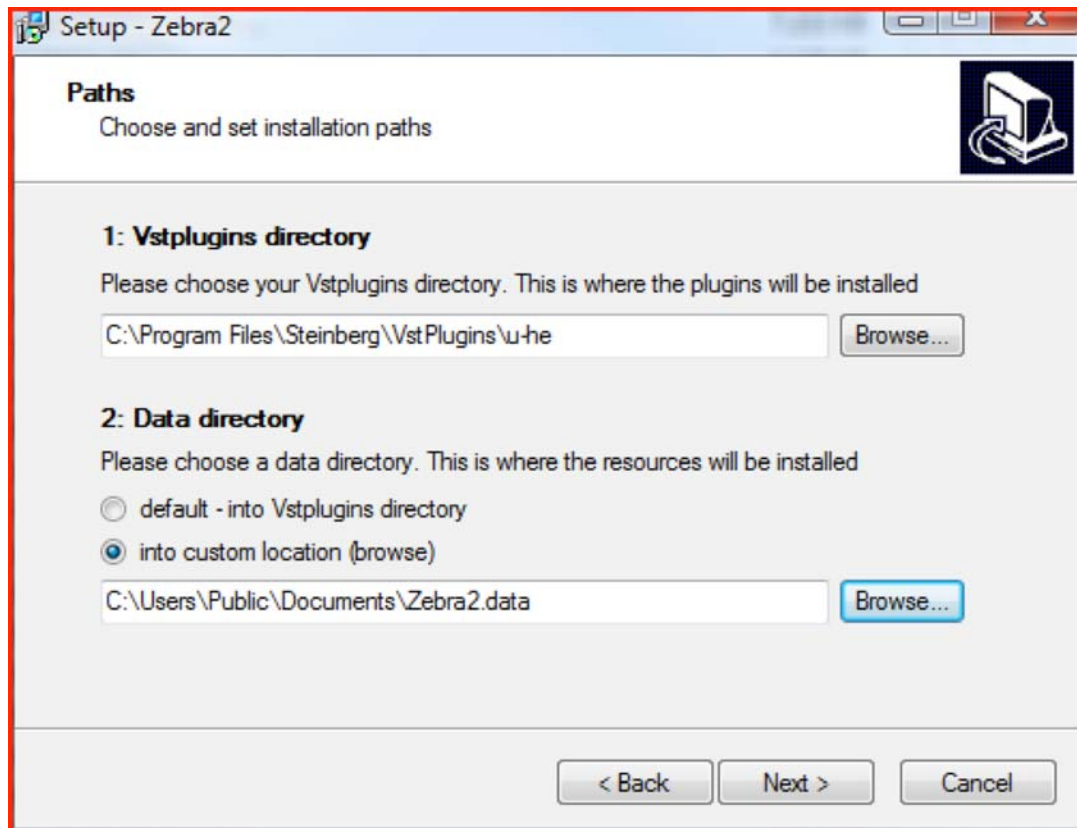
When you're done, click the checkbox „I accept the agreement“. When you do so, you can click Next.



## Set up the installation paths

The third page is separated into two sections. In the first section you are asked to browse to your Vstplugins directory into which you want to have Zebra installed. On some systems this information will be retrieved from previous installations. If not, then just click Browse and locate your Vstplugins directory.

In the second section you're asked to specify a place to install Zebra.data. By default it'll just take up the same directory as Zebra2.dll. If the installer however finds a previously set up custom location, it'll default to that. This makes updating very easy even if your data folder is moved somewhere else.



If you're a first time user (i.e. you're not updating from a previous version), you can click Browse and choose a location of your preference. The installer will then move all data into that location and create a Windows Shortcut in the Vstplugins directory for you.

Note: If your Vstplugins directory is in a restricted area of your Windows installation, such as

C:\Program Files\Steinberg\Vstplugins\

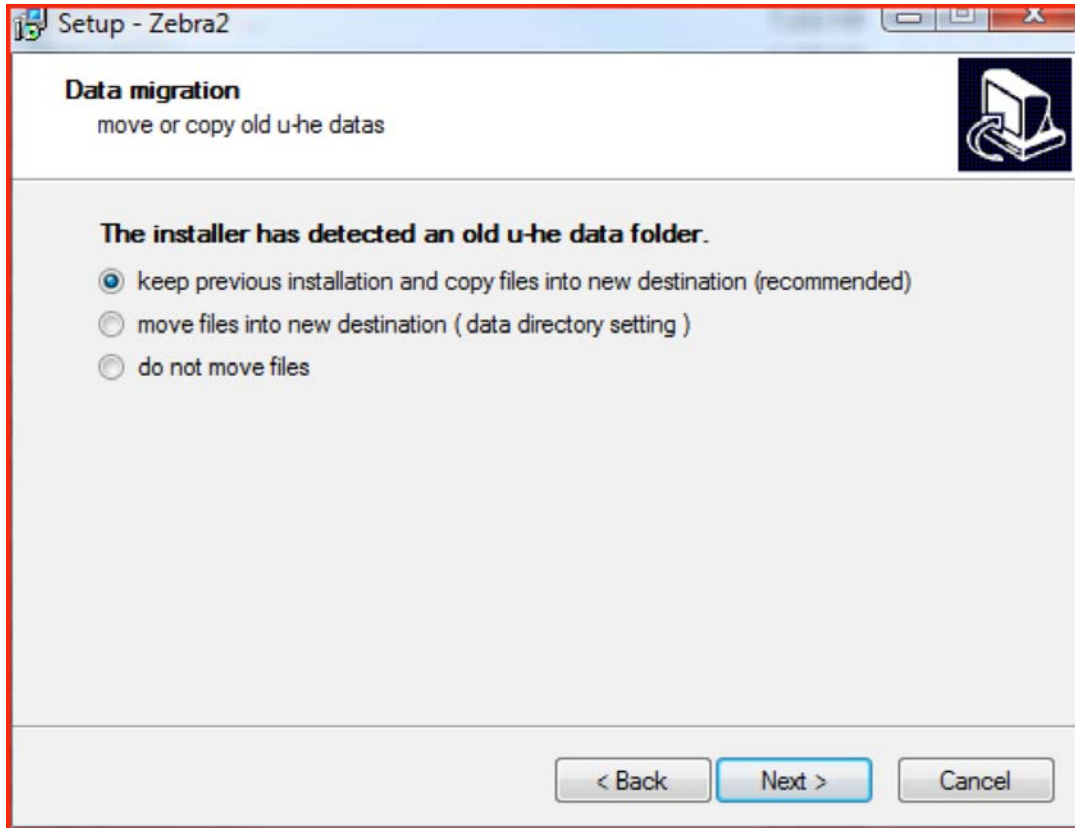
then it is highly recommended to choose a custom location for the Zebra2.data folder. The best place to store data and have it accessible by the plugin, e.g. to save presets, is here

C:\Users\Public\Documents\

If you store your data there (or in any subfolder), you won't have any problems with file permissions. You can however choose any location you prefer, also on other hard drives. The installer will then create a shortcut to that location so that Zebra knows where to look for its resources.

## Migrating previous installations

If you have had a previous version of Zebra installed the installer will now ask you what to do with that:



You can choose to copy or move data from previous installations, or leave it untouched. The locations in question are:

C:\Program Files\u-he\Zebra2\ (resources)  
C:\Program Files\u-he\Presets\Zebra2\ (preset files)  
C:\Program Files\u-he\Support\com.u-he.Zebra2.midimap.txt (MIDI learn)  
C:\Program Files\u-he\Support\com.u-he.Zebra2.user.txt (license file)

If you choose to move or copy these files, the installer will first create the new Zebra2.data location, then copy or move the old files before finally installing the new data that comes with the installer itself.

## Selecting what to install

Click Next after choosing your paths and possibly your migration settings.

You now have the option to only install the plugins and resources and or the presets. If you have previously installed Zebra and you have sorted through the factory presets, you can simply choose not to install factory presets at all. You can however run the installer at any time again and install the presets.

Commonly you will do the typical installation and just install both Plugins and Presets.

## Finishing the installation

You will now be presented with a little summary in which you can verify the installation paths. Click Next again to start the actual installation where all files are being copied into their final destination. This may take a few seconds. Once it's done you only need to click Finish to exit the installer.

That's it. Now Zebra 2.5 is installed on your computer and should be visible next time you start your VST host application.

## Uninstalling Zebra

The installation is very transparent. There are no secret files involved nor any entries in the Registry. Thus to uninstall simply drag Zebra2.dll, zebralette.dll, Zebrify.dll, ZRev.dll and Zebra2.data into your trash.

## Removing previous versions

Once you're sure that you have successfully upgraded to Zebra 2.5 from version 2.3 or before, e.g. if your license is accepted and your presets are available in the preset manager, you can simply delete all Zebra related files in C:\Program Files\u-he\

Please note that some other u-he plugins such as Triple Cheese, Uhbik, ZebraCM and MFM2 might still have files there, so you might not want to just trash the whole directory.

As always, a backup is advisable before deleting any files that you might need later!