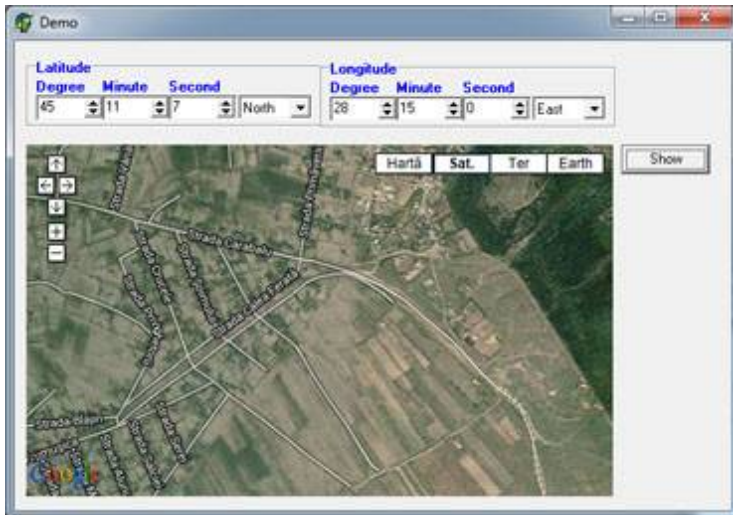


ZylGMaps 1.05

ZylGMaps is a Delphi / C++Builder component which displays Google maps positions in your applications.



The demo version is fully functional in Delphi and C++Builder IDE, but it displays a nag dialog (the licensed version will, of course, not have a nag dialog and will not be limited to the IDE). The package includes demo programs for Delphi and C++Builder and a help file with the description of the component.

Supported Operating Systems: Windows

98/Me/NT/2000/XP/Server2003/Vista/Server2008/7/8/Server2012/10

Available for: Delphi 10.1 (Win32 & Win64), Delphi 10 (Win32 & Win64), Delphi XE8 (Win32 & Win64), Delphi XE7 (Win32 & Win64), Delphi XE6 (Win32 & Win64), Delphi XE5 (Win32 & Win64), Delphi XE4 (Win32 & Win64), Delphi XE3 (Win32 & Win64), Delphi XE2 (Win32 & Win64), Delphi XE, Delphi 2010, Delphi 2009, Delphi 2006, Delphi 2005, Delphi 7, Delphi 6, Delphi 5, C++Builder 10.1 (Win32 & Win64), C++Builder 10 (Win32 & Win64), C++Builder XE8 (Win32 & Win64), C++Builder XE7, C++Builder XE6, C++Builder XE5, C++Builder XE4, C++Builder XE3, C++Builder XE2, C++Builder XE, C++Builder 2010, C++Builder 2006, Turbo Delphi, Turbo C++

Remarks:

- The Delphi 2006 version is fully compatible with Turbo Delphi
- The C++Builder 2006 version is fully compatible with Turbo C++

Installation:

If you have a previous version of the component installed, you must remove it completely before installing this version. To remove a previous installation, proceed as follows:

- Start the IDE, open the packages page by selecting Component - Install Packages
- Select ZylGMapsPack package in the list and click the Remove button
- Open Tools - Environment Options - Library and remove the library path pointing to ZylGMaps folder
- Close the IDE
- Browse to the folder where your bpl and dcp files are located (default is \$(DELPHI)\Projects\Bpl for Delphi, \$(BCB)\Projects\Bpl for C++ Builder). -Delete all of the files related to ZylGMaps
- Delete or rename the top folder where ZylGMaps is installed

-Start regedit (click Start - Run, type "regedit.exe" and hit Enter). Open the key HKEY_CURRENT_USER\Software\Borland\<compiler>\<version>\Palette and delete all name/value items in the list related to ZylGMaps. (<compiler> is either "Delphi" or "C++Builder", <version> is the IDE version you have installed)

-Unzip the zip file and open the ZylGMapsPack.dpk file in Delphi (ZylGMapsPack.bpk file in C++Builder), compile and install it and add to Tools/Environment Options/Library (in older Delphi/C++Builder menu) or Tools/Options/Delphi Options/Library/Library Path (in newer Delphi menu) or Tools/Options/C++ Options/Paths and Directories/Library Path & Include Path (in newer C++Builder menu) the path of the installation (where the ZylGMaps.dcu file is located). The component will be added to the "Zyl Soft" tab of the component palette. After you have the component on your component palette, you can drag and drop it to any form, where you can set its properties by the Object Inspector. If you still have problems in C++Builder, running an application, which contains the component, then open the project and in C++Builder menu, Project/Options/Packages and uncheck "Build with runtime packages".

-It is indicated to use this component with "Stop on Delphi exception" option deactivated. You can do this from Delphi / C++Builder menu, Tools/Debugger Options/Language Exceptions/Stop on Delphi exceptions in older versions or Tools/Options/Debugger Options/Embarcadero Debuggers/Language Exceptions/Notify on language exceptions in newer versions, otherwise you will have a break at all the handled exceptions.

Types:

TCardinalPoint = (cpNorth, cpSouth, cpEast, cpWest);

TMapType = (mpRoadmap, mpSatellite, mpSatelliteWithStreetNames, mpTerrain);

EZylGMapsException = class(Exception);

Properties:

Latitude_Degree - latitude degree

Latitude_Minute - latitude minute

Latitude_Second - latitude second

Latitude_Direction - latitude direction (North/South)

Longitude_Degree - longitude degree

Longitude_Minute - longitude minute

Longitude_Second - longitude second

Longitude_Direction - longitude direction (East/West)

Zoom - zoom level

MapType - type of the map (roadmap, satellite, terrain, etc.)

MarkerText - text which appears on the marker, if present

ApiKey - your google API key, if needed

Methods:

constructor Create(AOwner: TComponent) - constructor

procedure ShowMap - displays the map at the selected GPS position

function DMSToDecimalDegrees(Degree, Minute: Integer; Second: Extended; Direction: TCardinalPoint): Extended - converts DMS to decimal degrees

procedure LatitudeDecimalDegreesToDMS(DecDegree: Extended; var Degree, Minute: Integer; var Second: Extended; var Direction: TCardinalPoint) - converts decimal degrees to DMS for latitude values

procedure LongitudeDecimalDegreesToDMS(DecDegree: Extended; var Degree, Minute: Integer; var Second: Extended; var Direction: TCardinalPoint) - converts decimal degrees to DMS for longitude values

function GetLatitudeAsDecimalDegrees: Extended - returns latitude in decimal degrees

function GetLongitudeAsDecimalDegrees: Extended - returns longitude in decimal degrees

function GetMapTypeStr: AnsiString - returns map type in string format

procedure SetGPSCoordinates(pLatitude, pLongitude: Extended) - sets GPS coordinates in decimal degrees

Usage:

1. Put the component on a form.
2. Set the coordinates from properties in DMS format or with the method SetGPSCoordinates in decimal degrees.
3. Call the method ShowMap to display the map.

[**Buy Now!**](#)

Copyright by Zyl Soft 2003 - 2016

<http://www.zylsoft.com>

info@zylsoft.com

